

# BRUNTON

---

## RESIDENTIAL



**FEATHERWOOD AVENUE, NEWCASTLE UPON TYNE**

**£1,250 Per Month**

# BRUNTON

---

RESIDENTIAL





# BRUNTON

---

## RESIDENTIAL



# BRUNTON

---

## RESIDENTIAL

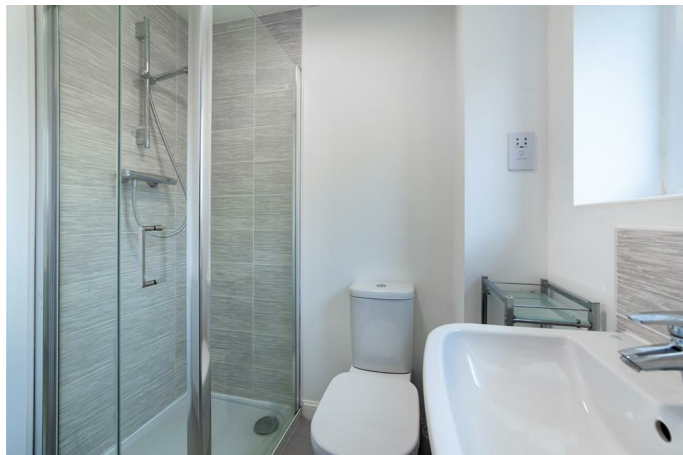
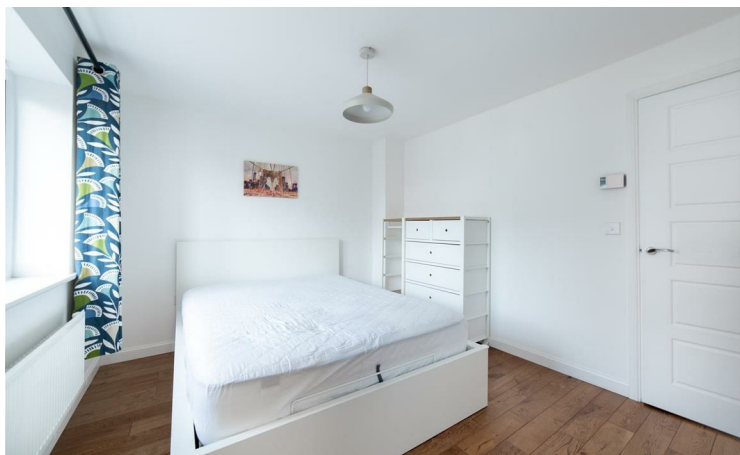


\*\*\* 360 VIRTUAL TOUR \*\*\* - Available 06/07/2026 Rent £1250pcm - New build house in 2015 - 3 bed detached house - Large living room with patio doors to the private garden - Modern kitchen - Family bathroom - Main bedroom with en-suite - Additional WC - Off-street parking for 2 car and additional parking for a 3rd - Large private rear garden.

# BRUNTON

---

## RESIDENTIAL



# BRUNTON

---

RESIDENTIAL



# BRUNTON

---

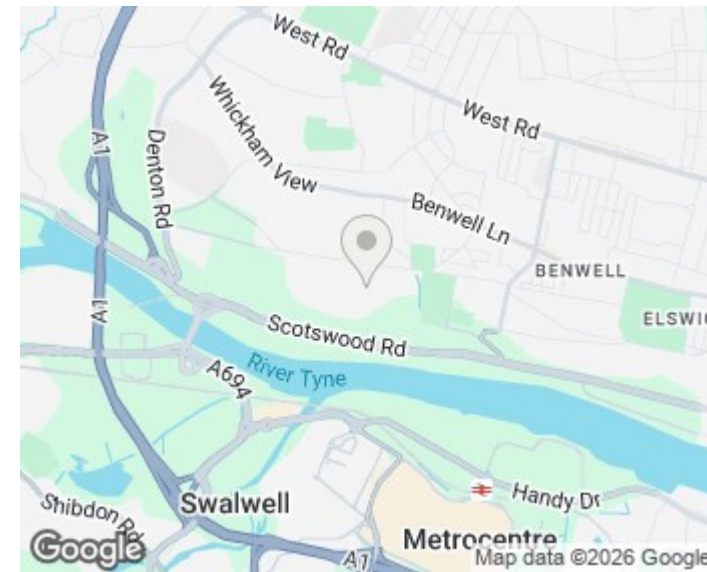
## RESIDENTIAL

TENURE :

LOCAL AUTHORITY : Newcastle

COUNCIL TAX BAND : B

EPC RATING : B



| Energy Efficiency Rating                    |  | Current                    | Potential |
|---|--|----------------------------|-----------|
| Very energy efficient - lower running costs |  |                            |           |
| (92 plus) A                                 |  |                            | 93        |
| (81-91) B                                   |  | 81                         |           |
| (69-80) C                                   |  |                            |           |
| (55-68) D                                   |  |                            |           |
| (39-54) E                                   |  |                            |           |
| (21-38) F                                   |  |                            |           |
| (1-20) G                                    |  |                            |           |
| Not energy efficient - higher running costs |  |                            |           |
| England & Wales                             |  | EU Directive<br>2002/91/EC |           |

| Environmental Impact (CO <sub>2</sub> ) Rating                  |  | Current                    | Potential |
|---|--|----------------------------|-----------|
| Very environmentally friendly - lower CO <sub>2</sub> emissions |  |                            |           |
| (92 plus) A   |  |                            |           |
| (81-91) B   |  |                            |           |
| (69-80) C   |  |                            |           |
| (55-68) D   |  |                            |           |
| (39-54) E   |  |                            |           |
| (21-38) F   |  |                            |           |
| (1-20) G  |  |                            |           |
| Not environmentally friendly - higher CO <sub>2</sub> emissions |  |                            |           |
| England & Wales   |  | EU Directive<br>2002/91/EC |           |