



Victoria Street
London, SW1H

CHESTERTONS





A fantastic, Manhattan-style apartment on set on the first floor of this Modern and beautifully finished development in the heart of Victoria. Accommodation comprises a bedroom area with built in storage and separate bathroom. Sliding doors open onto the reception and modern kitchen area and there is a separate utility / storage cupboard.

Benefits include a residents only gym and 24 hour concierge and a sky garden on the eighth floor.

55 Victoria Street is conveniently located for the shops, cafes and restaurants of Westminster and St James's Park as well as a number of London's most famous landmarks. The transport links can be found at St James's Park (Circle and District line) and Westminster (Jubilee, Circle and District line).

- Very Desirable Modern Development
- Immaculately presented 1st floor property
- Residents Only Gym
- Sky Garden
- 24 Hour Concierge

Asking Price £575,000

Energy Efficiency Rating		
Energy efficient - lower running costs	Current	Potential
92-100 A		
81-91 B	83	83
69-80 C		
55-68 D		
49-54 E		
41-48 F		
35-39 G		
Not energy efficient - higher running costs		
England, Scotland & Wales EU Directive 2002/91/EC		

Tenure: Leasehold (986 years and 5 months remaining on lease)
Service Charge: £5400 (Approximately)
Ground Rent: £500
Local Authority: Westminster
Council Tax Band: E

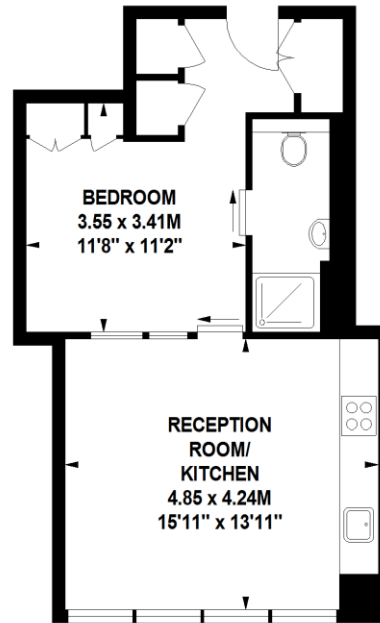
Chestertons Westminster & Pimlico Sales

105 Wilton Road
 London
 SW1V 1DZ
 westminster@chestertons.co.uk
 020 3040 8201
 chestertons.co.uk

Victoria Street, SW1H

Approximate gross internal area

41.62 sq m / 448 sq ft



First Floor

The floor plan is not to scale and measurements and areas shown are approximate and therefore should be used for illustrative purposes only.

The plan has been prepared in accordance with the RICS code of Measuring Practice and whilst we have confidence in the information produced, it must not be relied on.

If there is any aspect of particular importance, you should carry out or commission your own inspection of the property.

Copyright of FeaturePRO.

