



Pembridge Road, W11

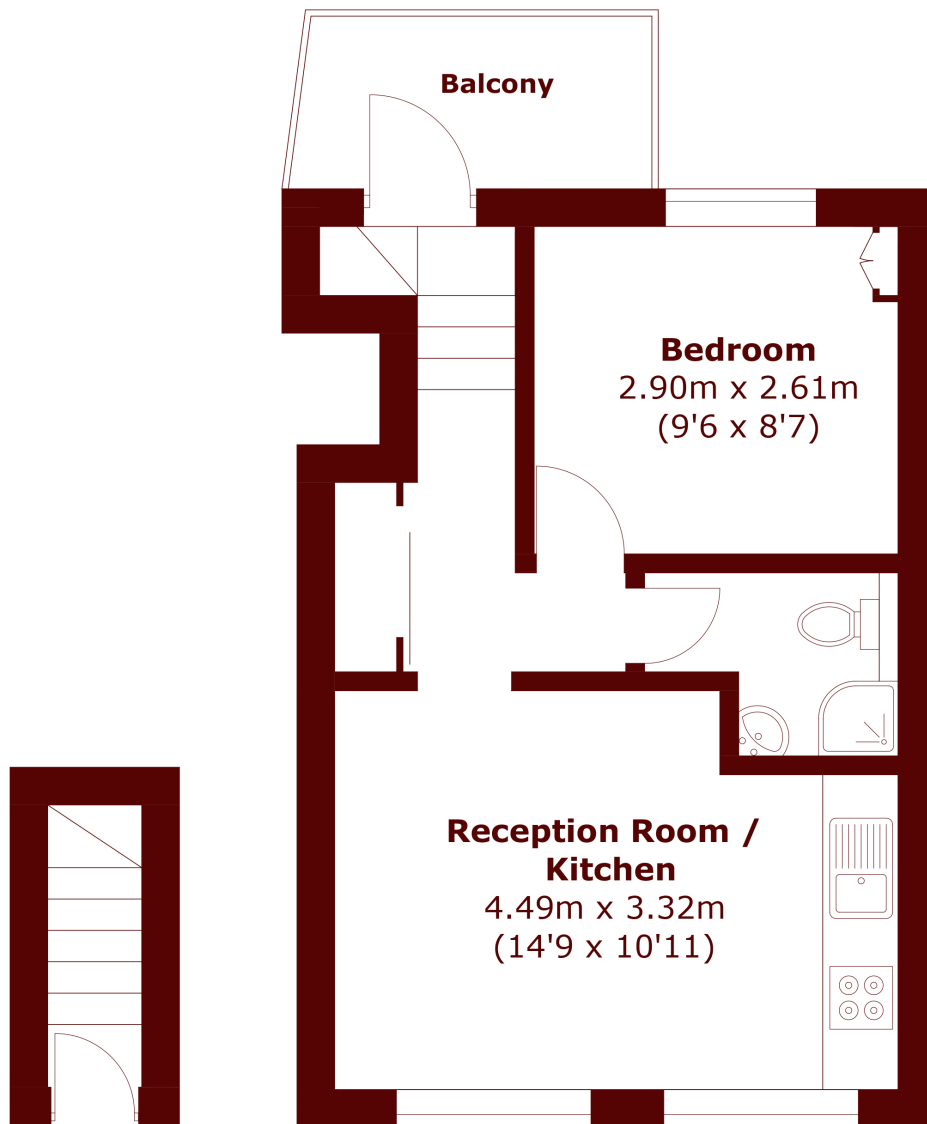
£600 per week (£6,200 pcm)

 1  1  1  E

• One bedroom

• Wooden floors

• Roof terrace



Ground Floor

First Floor

Total area (approx.): 31.9 sq. m (343.4 sq. ft)
Balcony : 3.9 sq. m (42.0 sq. ft)

Marsh & Parsons Notting Hill

2-6 Kensington Park Road,
London, W11 3BU
020 7313 2890