



**Bryanston Square, W1H**  
£2,000,000

**Dexters**



## Bryanston Square, W1H

A beautifully presented top floor apartment with two double bedrooms, two bathrooms and a study. Located in an attractive Georgian building on Bryanston Square where residents have access to the attractive gardens.

The apartment has a bright reception with adequate space to dine, a sleek modern kitchen with integrated appliances and a breakfast bar. The main bedroom has fitted wardrobes and an en suite bathroom, the second double bedroom has a dual aspect bedrooms, shower room and there is study that could be used as an occasional bedroom with natural light from a skylight. The common areas of the building have recently been decorated. Residents can apply for on street permit parking.

Bryanston Square is considered one of London's most desirable Garden Squares, offering resident's exclusive access of private gardens in the heart of central London. The open spaces of Hyde Park and Regent's Park are a short walk away and there are transport links from Bond Street, Marble Arch and Baker Street stations.

### Features

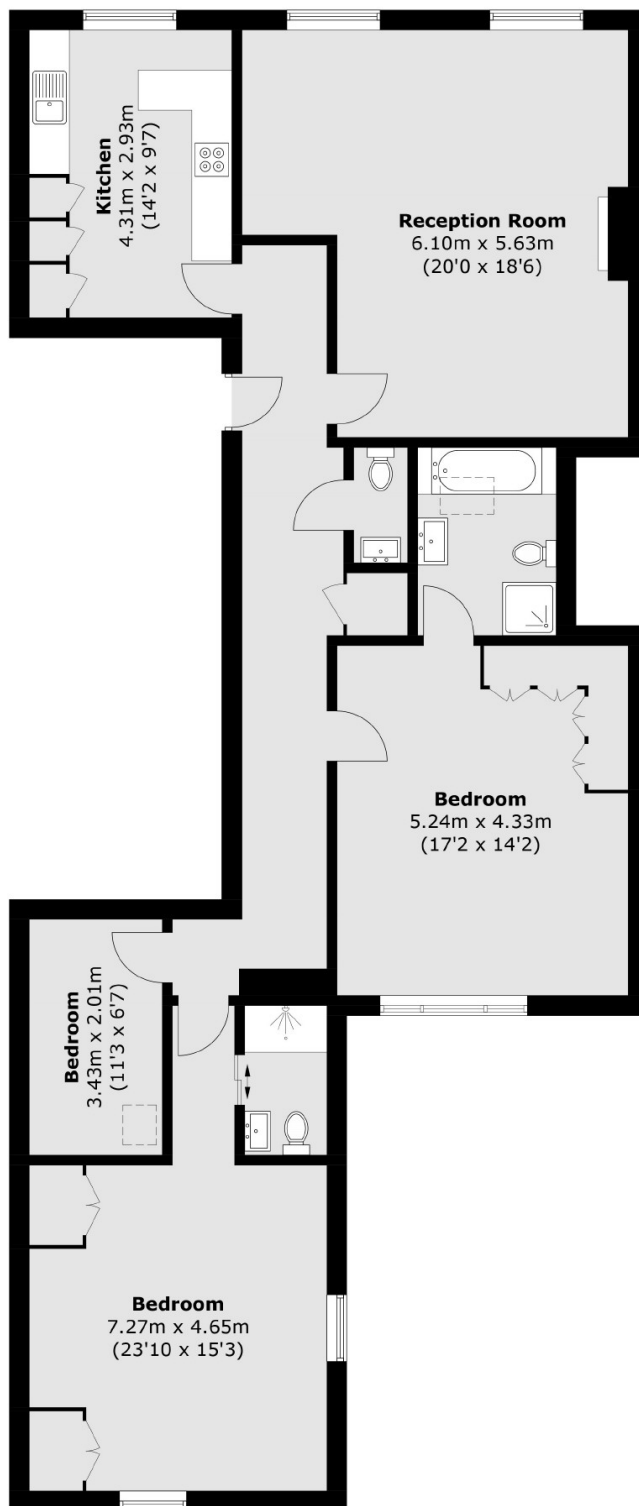
- Top Floor Apartment
- Passenger Lift
- Two Double Bedrooms
- Study/Occasional Bedroom
- Two Bathrooms
- Long Lease







# Bryanston Square, London, W1H



Total area (approx.): 130.7 sq. m (1,406.8 sq. ft)

## Dexters

Marylebone  
53-55 Weymouth Street  
London  
W1G 8NJ  
Sales  
020 7224 5544

Energy Rating: D. We aim to make our particulars both accurate and reliable. However they are not guaranteed; nor do they form part of an offer or contract. If you require clarification on any points then please contact us, especially if you're traveling some distance to view. Please note that appliances and heating systems have not been tested and therefore no warranties can be given as to their good working order.

 **RICS** Regulated  
Estate Agent  
and Letting Agent

[dexters.co.uk](http://dexters.co.uk)