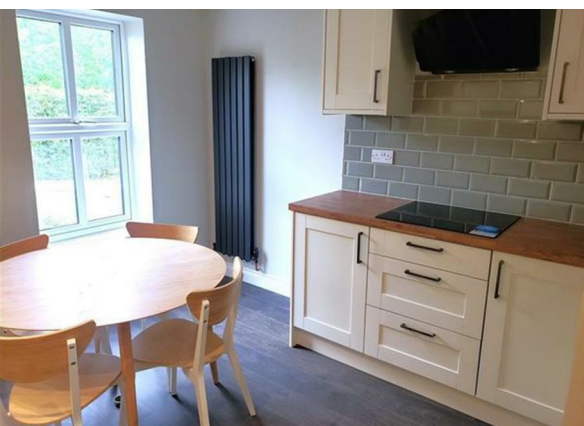


Gresham Drive, Newdale, Telford, TF3 5ES

£1,295

Council Tax Band: C



Lawley village has changed somewhat from 1086, when only 4 serfs and a villein were recorded in the area!

Now it is an amazing place to live with great access to local amenities, shops and schools for all ages completed by fantastic road links to all points of the compass - Telford centre just down the road, complete with train station.

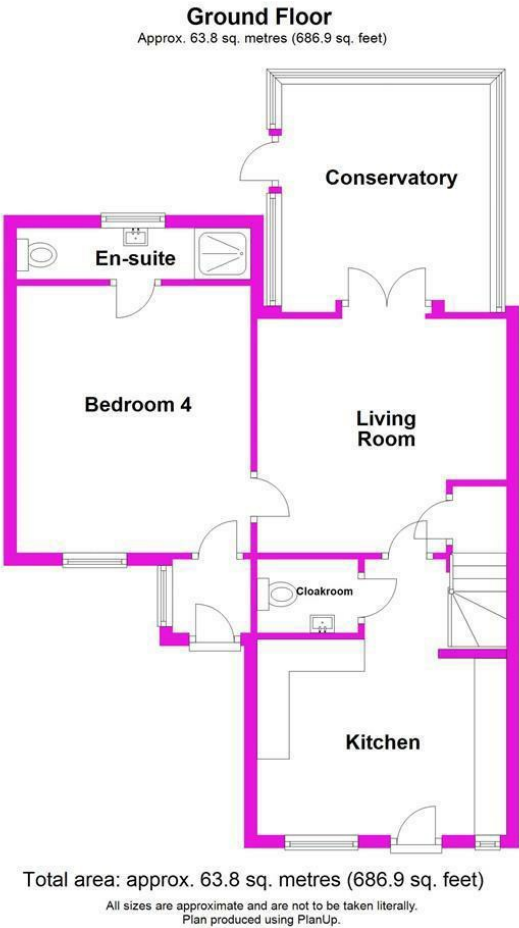
Situated on the corner of Corndean Meadow and Gresham Drive you can find this fabulous four bedroom, end of terrace town house. This property is just a hop, skip and a jump from the fantastic Lawley and Overdale Trail, where you can enjoy beautiful surroundings and nature.

Split over three floors, the ground floor having had a full refurbishment, this property offers spacious living for a growing family or professional.

*please note photos are from previous tenancy



Open House Whitchurch



Energy Efficiency Rating		
	Current	Potential
Very energy efficient - lower running costs		
(92 plus) A		
(81-91) B		
(69-80) C	77	81
(55-68) D		
(39-54) E		
(21-38) F		
(1-20) G		
Not energy efficient - higher running costs		
England & Wales		EU Directive 2002/91/EC