



Sandalwood 20, Wyedale Crescent, Bakewell, DE45 1BE

Sandalwood 20, Wyedale Bakewell, DE45 1BE

An extended three bedroomed semi-detached home conveniently located in the market town of Bakewell, benefitting from off road parking, single garage with carport and delightful gardens.

Occupying a generous corner plot, Sandalwood has accommodation arranged over one floor with two reception rooms, dining kitchen, family bathroom and three bedrooms, one being en-suite.

To the side of the property a composite door opens to the kitchen which feature a range of high gloss units with granite worktops. Integrated appliances include a fridge freezer, double oven, five burner hob with extractor, dishwasher and washing machine. The room enjoys a dual aspect overlooking both front gardens and benefits from underfloor heating.

The sitting room/dining room enjoys a rear facing aspect with French windows opening to the garden. Accessed from the sitting room is a further reception room with front facing aspect and multi-fuel stove.

An inner hallway provides access to further accommodation. The family bathroom features a white suite consisting of low flush wc, counter top wash basin and bath with chrome shower over.

The master bedroom is a spacious double bedroom with fitted wardrobes and adjoining en-suite shower room. The en-suite incorporates a low flush wc, pedestal wash basin, heated towel rail and walk-in shower enclosure. Bedroom two is a rear facing double bedroom with a pleasant garden aspect and bedroom three is a single bedroom with similar view and fitted wardrobes.

Outside, to the front of the property is driveway parking for two vehicles, leading to a single garage with electric roller door. The driveway features a covered carport.

The front gardens are laid to lawn with dwarf stone wall and well-stocked borders left for wildlife at the edge of each boundary.

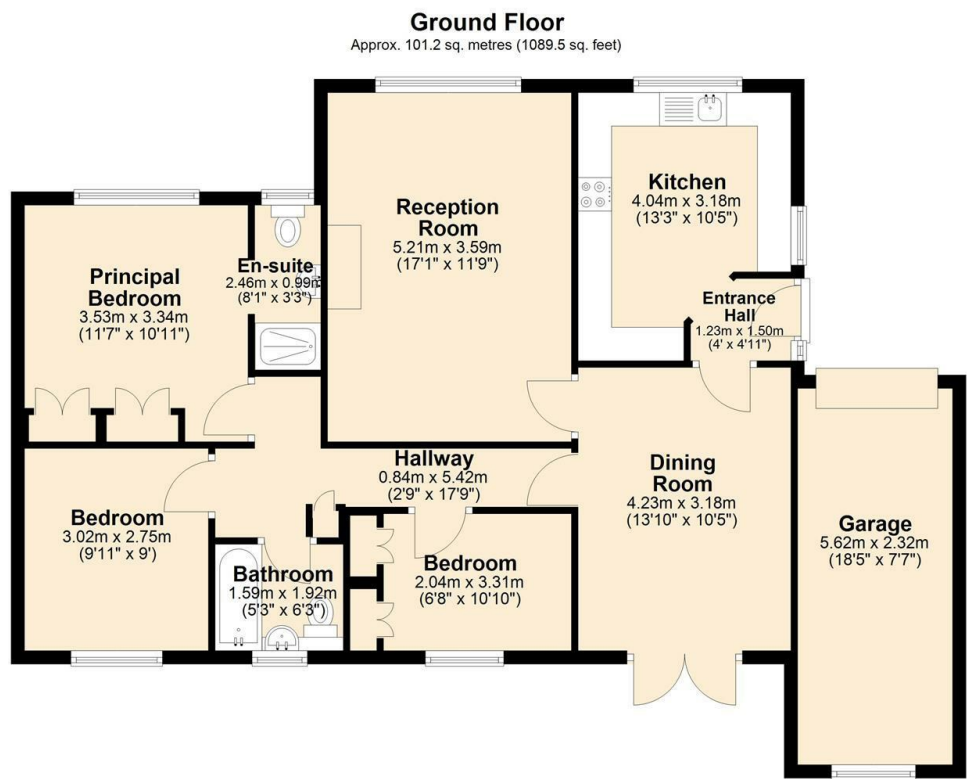
To the rear of the property is a garden laid to lawn with patio areas, deep floral borders and pleasant views.

All mains services

- Three bedroomed semi-detached on Wyedale Crescent, Bakewell
- Corner plot with generous gardens
- Fully integrated kitchen
- Two reception rooms, one with multifuel stove
- UPVC double glazing throughout
- Family bathroom
- En-suite master bedroom
- French windows to the garden
- Driveway parking, carport and garage







Total area: approx. 101.2 sq. metres (1089.5 sq. feet)



Bakewell
3 Royal Oak Place
Matlock Street
Bakewell DE45 1HD
T: 01629 700699
E: bakewell@elr.co.uk

Banner Cross
888 Ecclesall Road
Banner Cross
Sheffield S11 8TP
T: 01142 683388
E: bannercross@elr.co.uk

Dore
33 Townhead Road
Sheffield
S17 3GD
T: 0114 2362420
E: dore@elr.co.uk

Hathersage
Main Road, Hathersage
Hope Valley
Derbyshire S32 1BB
T: 01433 651888
E: peakdistrict@elr.co.uk

Rotherham
149 Bawtry Road
Wickersley
Rotherham S66 2BW
T: 01709 917676
E: wickersley@elr.co.uk



All rooms have been measured with electronic laser and are approximate measurements only. None of the services to the above property have been tested by ourselves, and we cannot guarantee that the installations described in the details are in perfect working order. Eadon Lockwood & Riddle for themselves, and for the vendors or lessors, produce these brochures in good faith, and are a guideline only. They do not constitute any part of a contract and are correct to the best of our knowledge at the time of going to press.