



11 Arundel Close, Ruyton XI Towns, Shrewsbury, SY4 1LU

2 bedroom end terrace house—£195,000 Freehold

11 Arundel Close, Ruyton XI Towns, Shrewsbury, SY4 1LU

Coopergreenpooks.co.uk

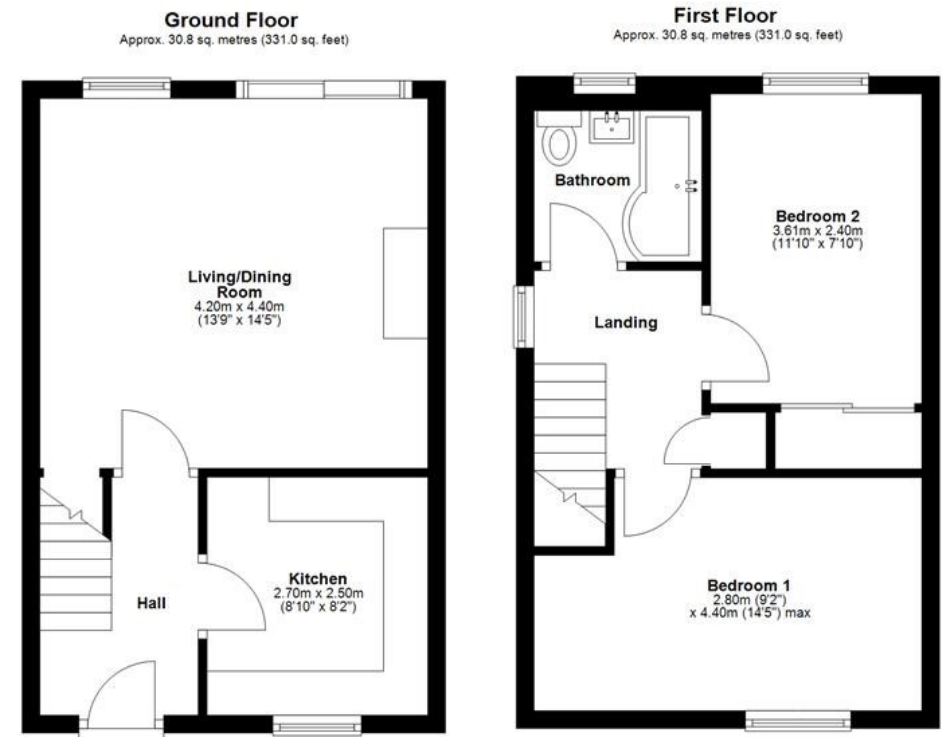
£195,000 Freehold—2 bedroom end terrace house

sales@cgpooks.co.uk

Occupying a lovely position, tucked away within a quiet cul-de-sac, this beautifully presented end terrace house has been improved to provide well-designed accommodation, while benefitting from a private landscaped garden and off street parking for two cars.

KEY FEATURES

- Good sized entrance hall with staircase to a light and spacious landing
- Large open plan living/dining room with useful under stairs storage and glazed doors onto the rear garden
- Well-fitted kitchen with integrated oven/hob, breakfast bar and space for appliances
- Master bedroom with a pleasant view to front over green open space and play area
- A further generous bedroom and re-fitted family bathroom
- uPVC double glazed windows and gas fired central heating via a modern combi boiler (fitted 2019)
- Landscaped rear garden, laid to lawn with paved sun terrace, planted borders, timber store and gated access to side
- Private parking to the front for at least two cars
- A very pleasant and quiet setting, within walking distance of village amenities including a primary school, pub and cafe. The village of Baschurch is also just a few miles away, and both market towns of Shrewsbury and Oswestry are within a 20 minute drive
- Sold with no upward chain



Cooper Green Pooks
3 Barker Street
Shrewsbury
SY1 1QF

www.cgpooks.co.uk
sales@cgpooks.co.uk



Total area: approx. 61.5 sq. metres (662.1 sq. feet)





11 Arundel Close, Ruyton XI Towns, Shrewsbury, SY4 1LU

Coopergreenpooks.co.uk

£195,000 Freehold—2 bedroom end terrace house

sales@cgpooks.co.uk



Cooper Green Pooks
3 Barker Street
Shrewsbury
SY1 1QF

www.cgpooks.co.uk
sales@cgpooks.co.uk



rightmove

onTheMarket.com

 **RICS**
Regulated by RICS

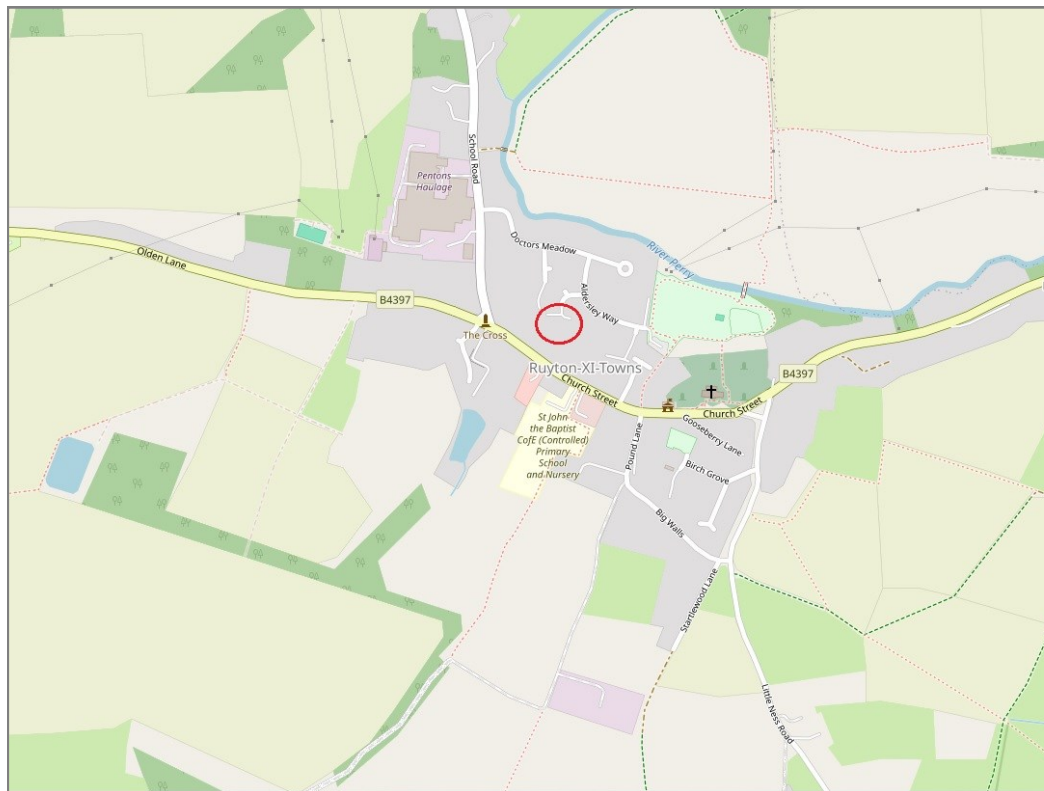
11 Arundel Close, Ruyton XI Towns, Shrewsbury, SY4 1LU

£195,000 Freehold—2 bedroom end terrace house

sales@cgpooks.co.uk

rightmove

onTheMarket.com



BOUNDARIES NOT CONFIRMED

Tenure	Freehold
Local Authority	Shropshire Council
Council Tax	Band
EPC Band	TBC
Services	All mains services are connected

Expert mortgage advice available

3 Barker St, Shrewsbury SY1 1QF

Cooper Green Pooks
01743 276666



Your home may be repossessed if you do not keep up repayments on your mortgage.

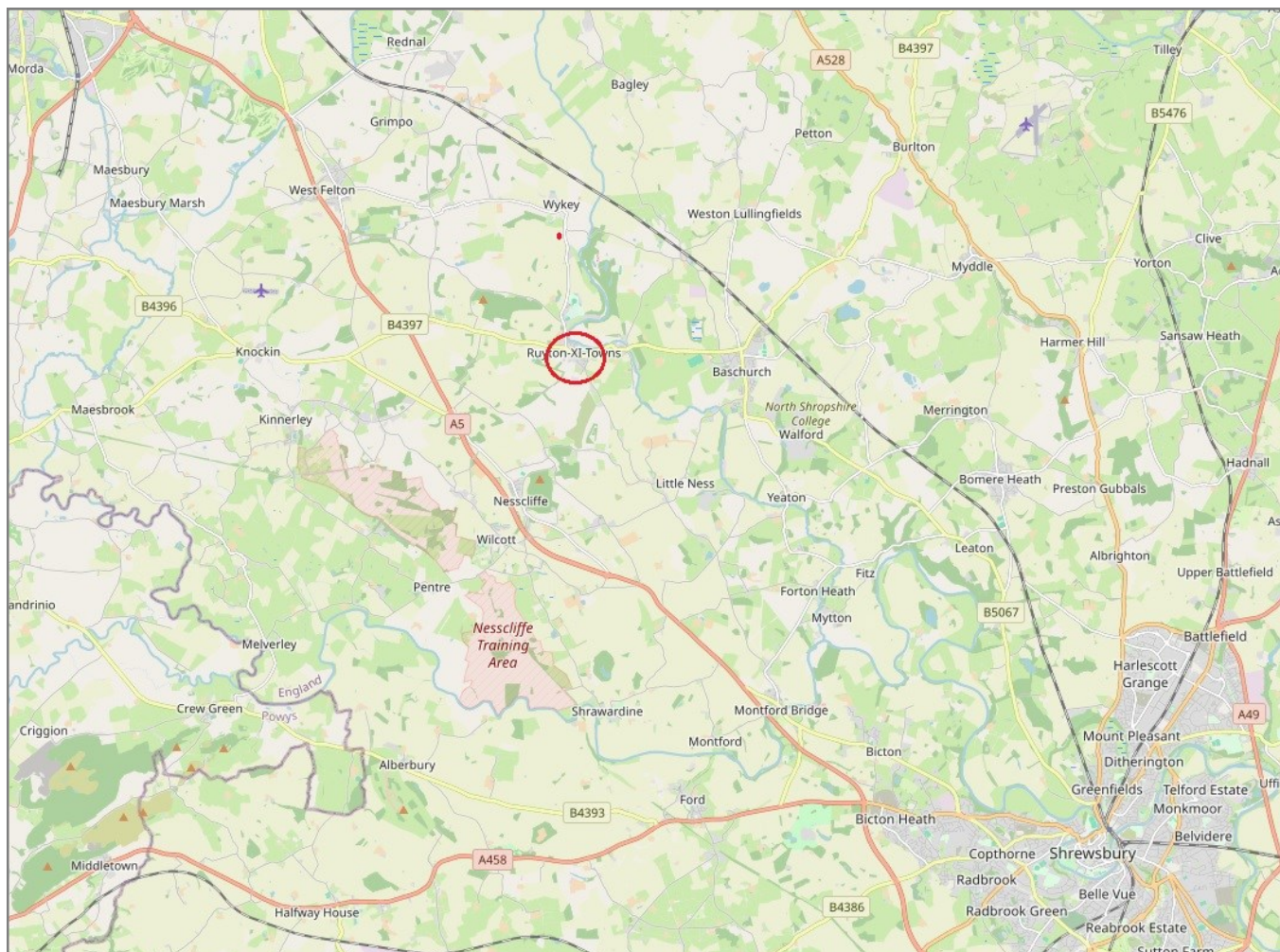
There may be a fee for mortgage advice. The actual amount you pay will depend upon your circumstances. The fee is up to 1% but a typical fee is 0.3% of the amount borrowed.

11 Arundel Close, Ruyton XI Towns, Shrewsbury, SY4 1LU

Coopergreenpooks.co.uk

£195,000 Freehold—2 bedroom end terrace house

sales@cgpooks.co.uk



IMPORTANT NOTICE: Cooper Green Pooks for themselves and for the lessors or vendors of this property whose agents they are give notice that: 1 No appliances, services or service installations have been tested and no warranty as to suitability or serviceability is implied. Any prospective purchaser or lessee is advised to obtain verification from their surveyor or solicitor. 2. The particulars are set out as a general outline only for the guidance of the intended purchasers or lessees and do not constitute, nor constitute part of, an offer or contract. 3. All descriptions, reference to condition and necessary permissions for use and occupation and other details are given in good faith and are believed to be correct but any intending purchasers or lessees should not rely on them as statements or representation of fact but satisfy themselves by inspection or otherwise as to the correctness of each of them. 4. No person in the employment of Cooper Green Pooks has any authority to make or give any representation or warranty whatsoever in relation to this property. 5. All rentals and prices are quoted exclusive of Stamp Duty, legal and surveyors fees and any other associated purchasers or lessees costs. 6. Floor plans are indicative only and should not be relied on. 7. The plan showing the boundary of the property is indicative only and has not been checked against the legal title so should not be relied on. 8. All dimensions, floor areas and site areas are only approximate and should not be relied on. Dimensions are generally maximum room dimension.