



101 Kitter Drive, Staddiscombe, Plymouth, PL9 9UH

£190,000



Located on the outskirts of Plymouth, bordering the South Hams countryside, is this lovely two-bedroom house. Ideal for first-time buyers or those looking to downsize, the property offers low maintenance living in a peaceful setting.

The ground floor accommodation comprises a spacious lounge/diner with French doors opening onto a south-facing garden, and a fitted kitchen complete with hob and oven.

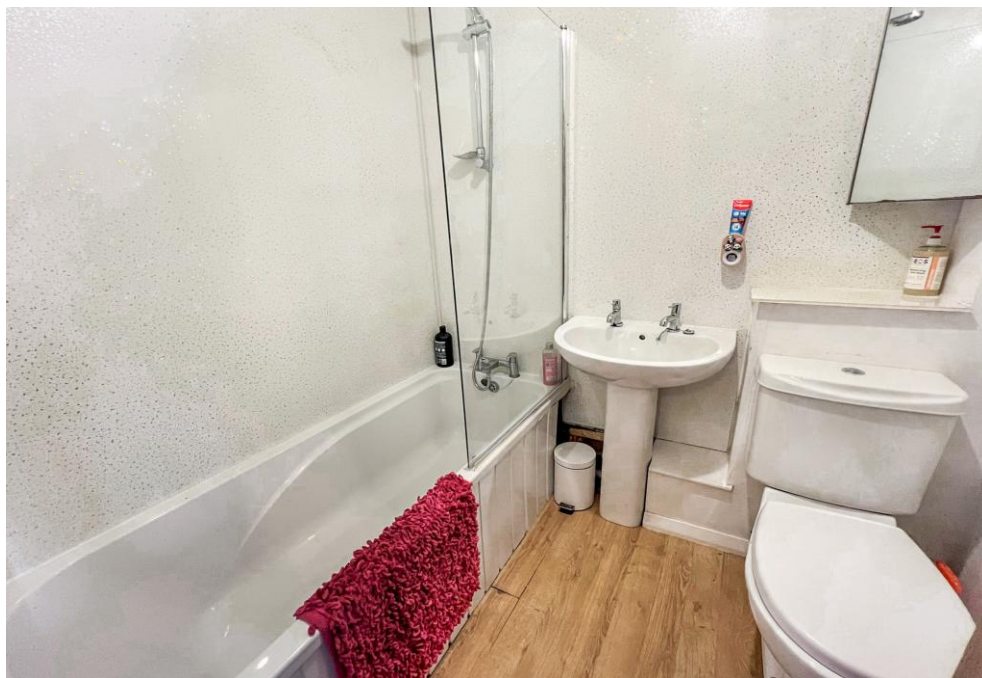
Upstairs, there are two double bedrooms and a modern three-piece family bathroom suite. To the front of the property, there is a lawned garden with a path leading to the front door. At the rear, you'll find an enclosed south-facing garden with a patio seating area perfect for relaxing or entertaining.

Allocated parking is located nearby for added convenience. The property enjoys easy access to a wide range of amenities, including well-regarded primary and secondary schools, shops, and leisure facilities. Excellent transport links are provided by a regular bus service to both Plymouth and the South Hams.

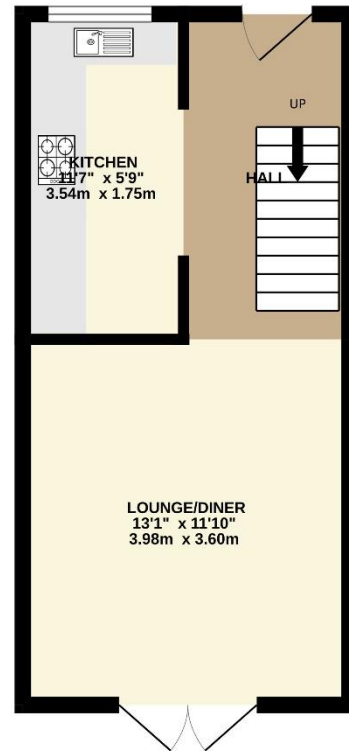


Located on the outskirts of Plymstock this family home is ideally positioned giving good access to popular local schooling and amenities. Transport links provide access to Plymstock, the Broadway Shopping Centre, the vibrant Plymouth City Centre and the South Hams countryside and coastlines. Recreational facilities are close to hand including Horsham Playing Fields, Staddon Heights Golf Course, the Mount Batten Water Sports Centre and stunning walks can be enjoyed along the Southwest coastal path incorporating Jennycliff, Bovisand and Wembury Beaches.

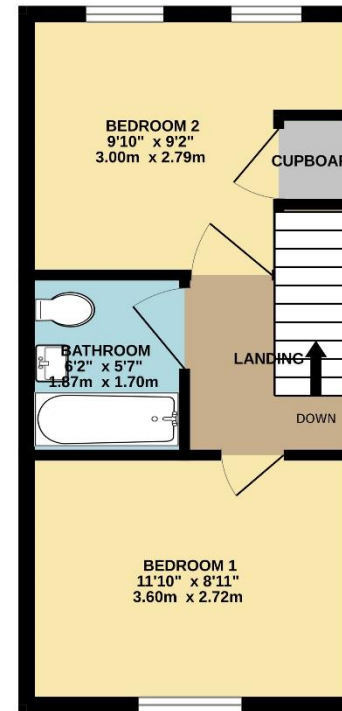
To view this property call Lang Town & Country Estate Agents on 01752 456000



GROUND FLOOR



1ST FLOOR



Measurements are approximate. Not to scale. Illustrative purposes only.
Made with Meropix ©2025

Lang Town & Country
6 The Broadway
Plymouth
PL9 7AU

Tel: 01752 456000

Email: plymstock@langtownandcountry.com

www.langtownandcountry.com

Lang Town & Country endeavour to ensure the accuracy of property details produced and displayed, we have not tested any apparatus, equipment, fixtures, fittings or services and so cannot verify that they are connected, in working order or fit for purpose. A buyer must check the availability of any property and make an appointment to view before embarking on any journey to see a property.

