



Rosebery Place, Mill Hill, NW7

£550,000

A spacious and well-presented two double bedroom apartment, set within the sought-after Rosebery Place development on Bunns Lane, offering over 1,090 sq ft of bright and well-proportioned accommodation.

The property features a generous reception room with ample space for both relaxing and entertaining, leading through to a separate dining room and a well-appointed kitchen. The layout provides an excellent balance of living and entertaining space, making it ideal for both owner-occupiers and downsizers alike.

There are two substantial double bedrooms, with the principal bedroom benefiting from an en-suite shower room. A modern family bathroom further enhance the practicality of the accommodation.

The property is conveniently located within easy reach of Mill Hill Broadway's shops, restaurants and Thameslink station, whilst also benefiting from nearby open spaces and excellent local amenities.

Offered chain free, this is an excellent opportunity to acquire a spacious apartment in a highly desirable Mill Hill location. Sole Agent.

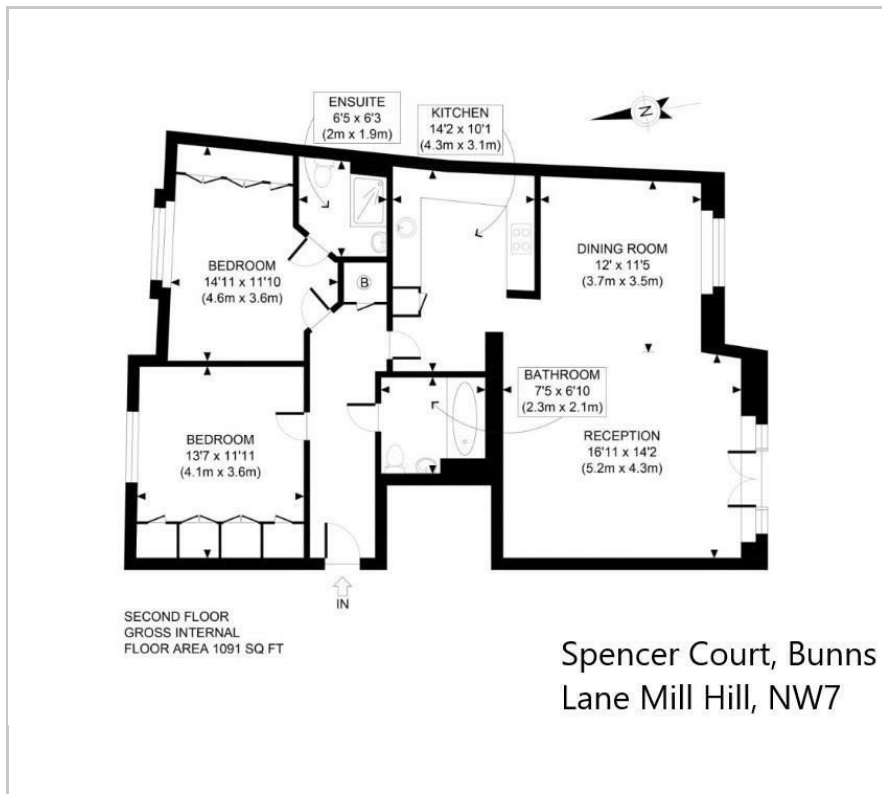
Viewing

Please contact our Mill Hill Office on 02089590011 if you wish to arrange a viewing appointment for this property or require further information.

- Two Double Bedroom Apartment
- Over 1,090 Sq Ft Of Accommodation
- Spacious Reception Room
- Dining Room
- Well-Appointed Kitchen
- Principal Bedroom With En-Suite
- Family Bathroom
- Bright & Well-Proportioned Throughout
- Underground Parking
- Private Gated Development



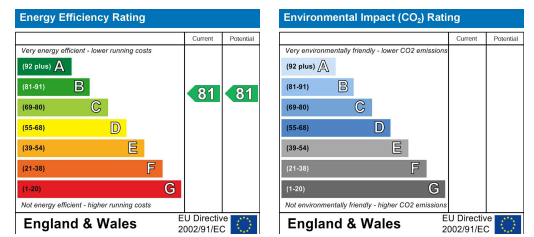
Floor Plan



Area Map



Energy Efficiency Graph



These particulars, whilst believed to be accurate are set out as a general outline only for guidance and do not constitute any part of an offer or contract. Intending purchasers should not rely on them as statements of representation of fact, but must satisfy themselves by inspection or otherwise as to their accuracy. No person in this firm's employment has the authority to make or give any representation or warranty in respect of the property.