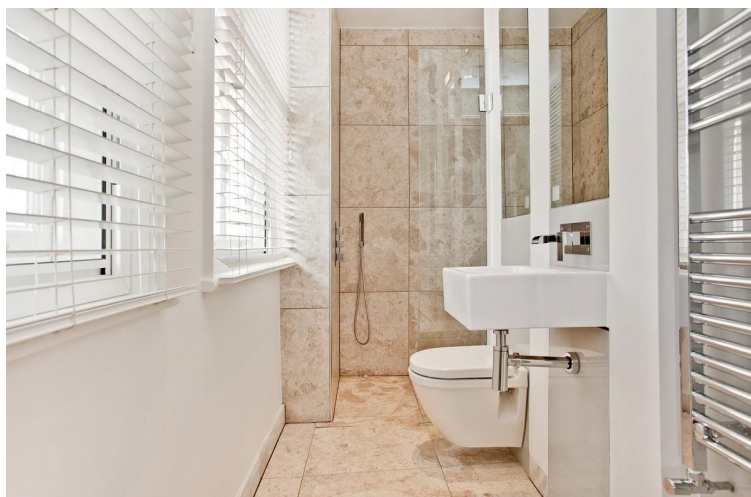


Devonshire Place, London W1G

Price £2,425 per week - Furnished,
Unfurnished







Description

A bright and modern 3 bedroom maisonette situated in the heart of Marylebone W1. Split over the first and second floors with high ceilings, period features and large sash windows. The first floor has a large open plan kitchen which features parquet flooring, island and access through to a utility room and guest cloakroom. Also a spacious reception room with bay window. 3 bedrooms are situated on the second floor, 2 of which have built in storage and 1 being an en suite with shower room. There is also an additional bathroom. This flat benefits from high ceilings and period features.

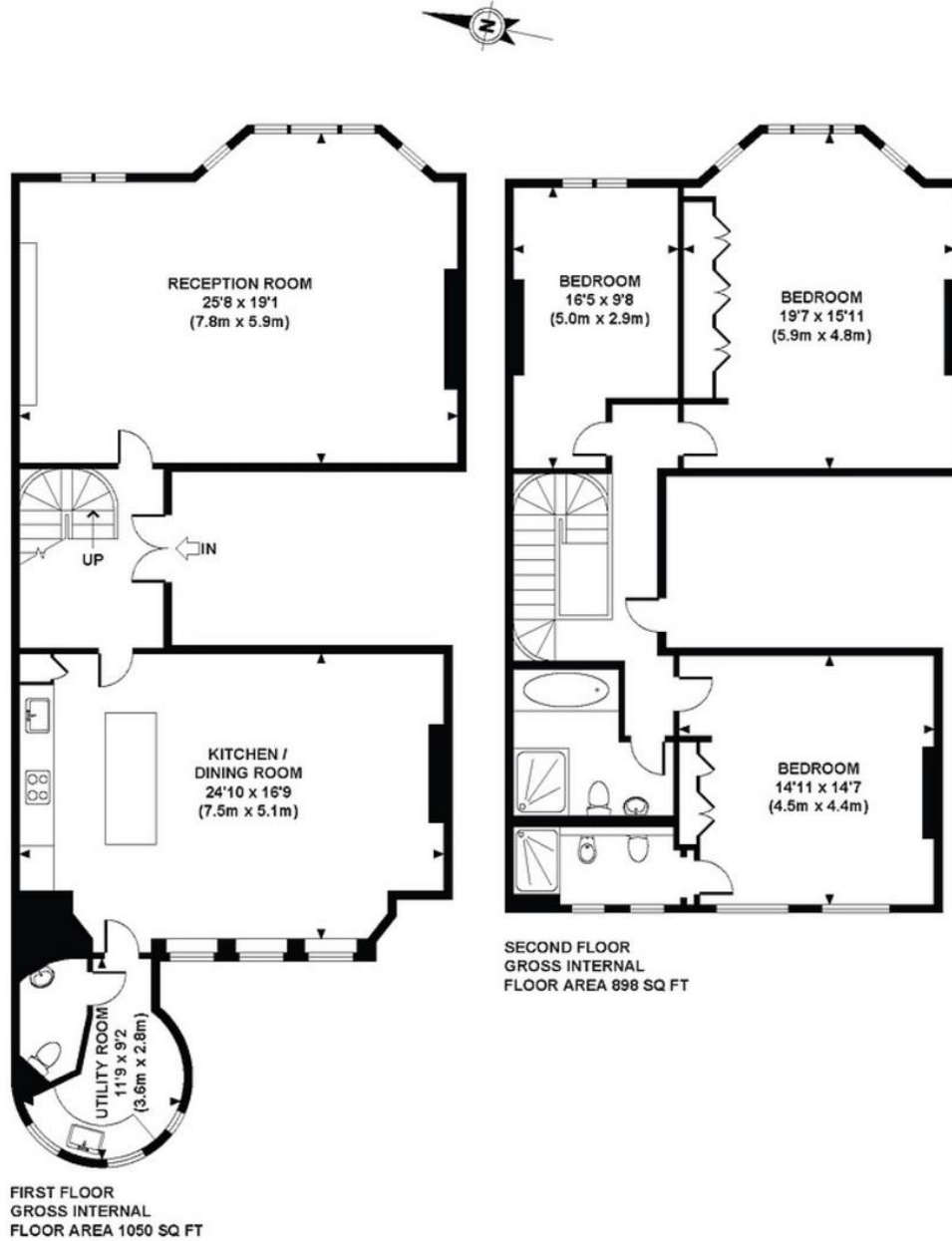
Council tax band: G. Rent is payable on a monthly basis, and you may be required to pay more than a month's rent in advance for tenancies with annual rents exceeding £100,000. You will be required to pay a 1 week holding deposit following a successful offer. Tenancies with annual rents up to £50,000 will require a 5 weeks' security deposit, while those exceeding this threshold will require a 6 weeks' deposit. Utility bills, council tax, telephone line and broadband are not included in the rent. As well as paying the rent, you may also be required to make some additional permitted payments. If your tenancy does not qualify as an APT, additional fees may apply. Please visit jll.co.uk/fees for details of fees that may be payable when renting a property. To check broadband and mobile phone coverage please visit ofcom.org.uk/phones-telecoms-and-internet/advice-for-consumers/advice/ofcom-checker

- Master bedroom with ensuite shower room and built in storage
- 2 further double bedrooms
- Family bathroom with shower included
- Large reception room
- Modern kitchen with dining area
- Utility room
- Guest WC
- High ceilings
- Period features
- Unfurnished or furnished via separate negotiation

Floorplan

1,948 sq ft | 181 sq m

Approximate gross internal area 1948 sq. ft / 181 sq. m



For illustrative purposes only, not to scale
Floorplan created by FRESH PHOTO HOUSE

Mayfair and Marylebone
St George Street,
London W1S 2FQ
+44 207 399 5550
mayfair@jll.com

Urban living, your way.

jll.co.uk/residential

© 2019 Jones Lang LaSalle IP, Inc. All rights reserved. All information contained herein is from sources deemed reliable; however, no representation or warranty is made to the accuracy thereof.

