



Apartment

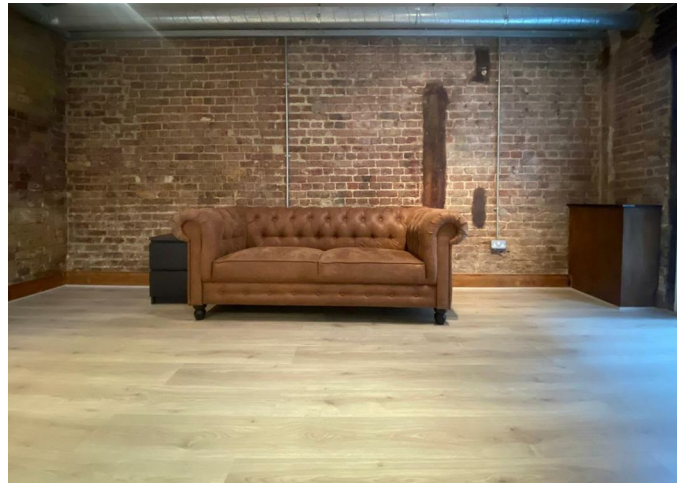
# 1, PRINCE OF WALES PASSAGE, NW1 3EF

Per Month  
**£3,475**

Available: 25th March 2026

## FEATURES

- Furnished or unfurnished
- Three Double Bedrooms
- Exposed Brickwork
- Moments from Euston Station and Warren St
- Warehouse Conversion
- Modern Bathroom
- Wooden Flooring
- Easy Commute to Camden Town, The West End and The City



# Huddletons

# 3 Bedroom Apartment located in London

A very unique three double-bedroom warehouse conversion quietly tucked away off Hampstead Road and moments away from Euston Station (Northern Line and National Rail) and converted from within a period building on Prince of Wales Passage.

Call us on

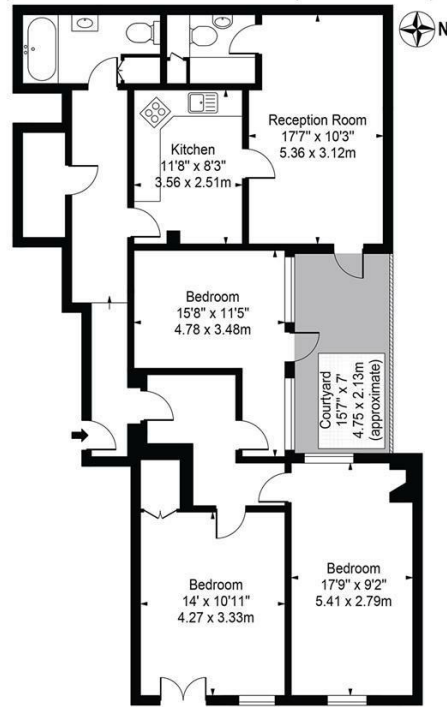
**0207 205 4411**

[info@huddletons.com](mailto:info@huddletons.com)

<http://www.huddletons.com>

**Council Tax Band**

Prince Of Wales Passage, NW1 3EF  
Approx. Gross Internal Area 1082 Sq Ft - 100.52 Sq M



Ground Floor  
For Illustration Purposes Only - Not To Scale

This floor plan should be used as a general outline for guidance only and does not constitute in whole or in part an offer or contract. Any intending purchaser or lessee should satisfy themselves by inspection, searches, enquiries and full survey as to the correctness of each statement. Any areas, measurements or distances quoted are approximate and should not be used to value a property or be the basis of any sale or let.

Energy Efficiency Rating		Current	Potential
<i>Very energy efficient - lower running costs</i>			
(92 plus) <b>A</b>			
(81-91) <b>B</b>			
(69-80) <b>C</b>			
(55-68) <b>D</b>			
(39-54) <b>E</b>			
(21-38) <b>F</b>			
(1-20) <b>G</b>			
<i>Not energy efficient - higher running costs</i>			
<b>England &amp; Wales</b>		EU Directive 2002/91/EC	

Agents Note: Whilst every care has been taken to prepare these particulars, they are for guidance purposes only. All measurements are approximate and are for general guidance purposes only and whilst every care has been taken to ensure their accuracy, they should not be relied upon and potential buyers are advised to recheck the measurements.

# Huddletons