

Directions

Viewings

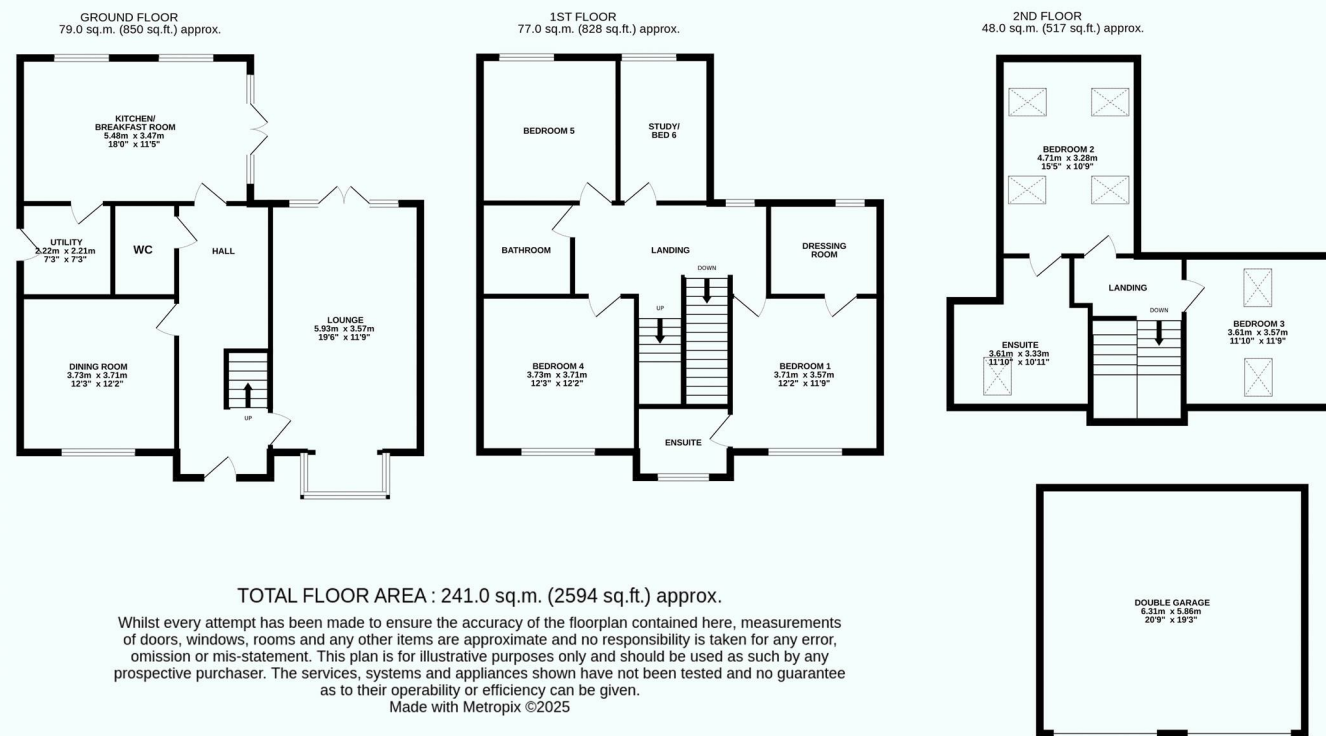
Viewings by arrangement only. Call 01825 701 030 to make an appointment.

EPC Rating

Energy Efficiency Rating		Current	Potential
Very energy efficient - lower running costs			
(92 plus) A			
(81-91) B			
(69-80) C			
(55-68) D			
(39-54) E			
(21-38) F			
(1-20) G			
Not energy efficient - higher running costs			
England & Wales		EU Directive	2002/91/EC



Peter Oliver



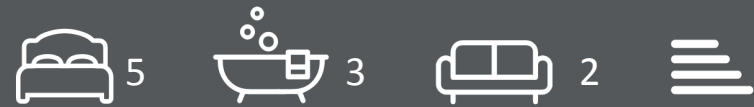
1 Corn Mill Lane, Framfield Road, Blackboys, Uckfield, East Sussex, TN22

51R
£3,000 Per month

- Five/Six Bedroom Family Home on Exclusive Development
- Sought After Blackboys Village Location
- En-Suite Bathrooms to Two Bedrooms
- South Facing Garden
- Unfurnished
- Newly Build to a High Standard
- Two Reception Rooms
- Double Garage & Driveway Parking
- Available Immediately
- EPC to Follow

1 Corn Mill Lane, Framfield Road, Uckfield TN22 5LR

Welcome to Corn Mill Lane – An Exclusive Collection of 9 Executive Homes in the heart of the charming village of Blackboys. This property is the largest of the development being a five/six bedroom detached family home.



Council Tax Band: New Build

Offering a rare blend of luxury, space, and tranquillity. Set on some of the most impressive plots in the area, each home boasts a generous south-facing garden – far larger than average – perfect for outdoor entertaining, gardening enthusiasts, or simply enjoying peaceful countryside living.

Completing the development is a stunning detached residence with a double garage and driveway.

Every home is finished to the highest specification, blending timeless style with modern convenience. Features include - Solid oak herringbone flooring, luxurious, fully tiled bathrooms, bespoke kitchens with premium finishes and integrated appliances, energy-efficient air source heat pumps, solid oak entrance porches, electric garage doors, sandstone patios and expansive lawns with secure fenced boundaries. Thoughtfully designed for contemporary living, these homes also offer breath-taking distant views to both the front and rear, enhancing the already idyllic setting. Along with having private driveways, residents will also benefit from additional visitor parking. Early viewing is highly recommended.

