



Dormouse Drive | | Newport | PO30 2JZ

Offers In The Region Of £215,000



## Dormouse Drive | Newport | PO30 2JZ Offers In The Region Of

This charming end terrace home is located on Dormouse Drive in Newport. Built in 2019, it offers a modern living experience throughout.

The ground floor features a well-proportioned living area, ideal for both entertaining and relaxing, with a contemporary layout suited to modern living.

Upstairs, the property offers two spacious bedrooms, making it perfect for small families, couples, or those seeking additional space for a home office or guest room.

Set in a quiet and peaceful location, the property is conveniently close to local amenities, well-regarded schools, and nearby parks.

- 2 BEDROOMS
- END OF TERRACE
- CLOSE TO NEWPORT AMENITIES
- ALLOCATED PARKING SPACE
- 2019 NEW BUILD

Front Exterior

Rear Garden

Kitchen  
6'1" x 8'6" (1.86 x 2.58)

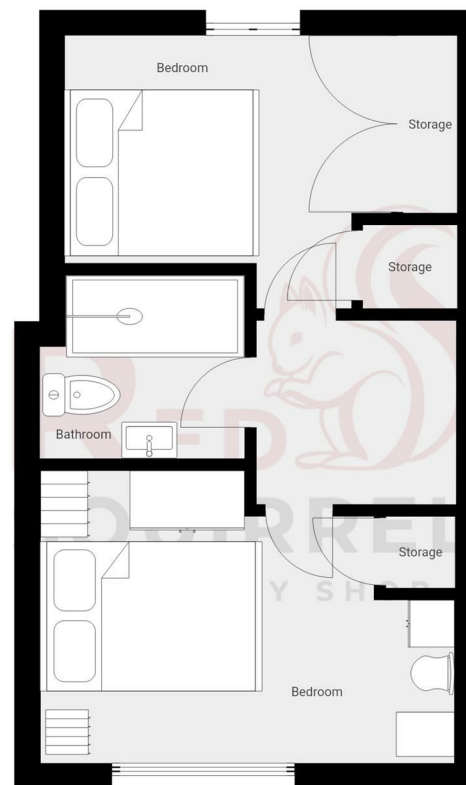
Living Room  
12'9" x 14'2" (3.89 x 4.32)

Bedroom 1  
9'4" x 13'3" (2.85 x 4.04)

Bedroom 2  
8'9" x 10'5" (2.66 x 3.18)

Shower Room  
6'7" x 5'10" (2 x 1.79)

Ground Floor WC  
2'9" x 5'1" (0.83 x 1.56)



Energy Efficiency Rating		Current	Potential
<i>Very energy efficient - lower running costs</i>			
(92 plus)	A		95
(81-91)	B		
(69-80)	C	80	
(55-68)	D		
(39-54)	E		
(21-38)	F		
(1-20)	G		
<i>Not energy efficient - higher running costs</i>			
<b>England &amp; Wales</b>		EU Directive 2002/91/EC	

Council Tax Band **B**  
EPC Rating **C**

3 Langely Court Pyle Street  
Newport  
Isle of Wight  
PO30 1LA  
01983 521212

enquiries@redsquirrelpropertyshop.co.uk  
www.redsquirrelpropertyshop.co.uk

THIS FLOOR PLAN IS PROVIDED WITHOUT WARRANTY OF ANY KIND. SENSOPHA DISCLAIMS ANY WARRANTY INCLUDING, WITHOUT LIMITATION, SATISFACTORY QUALITY OR ACCURACY OF DIMENSIONS.