



Wheatfield Way, KT1

£495,000

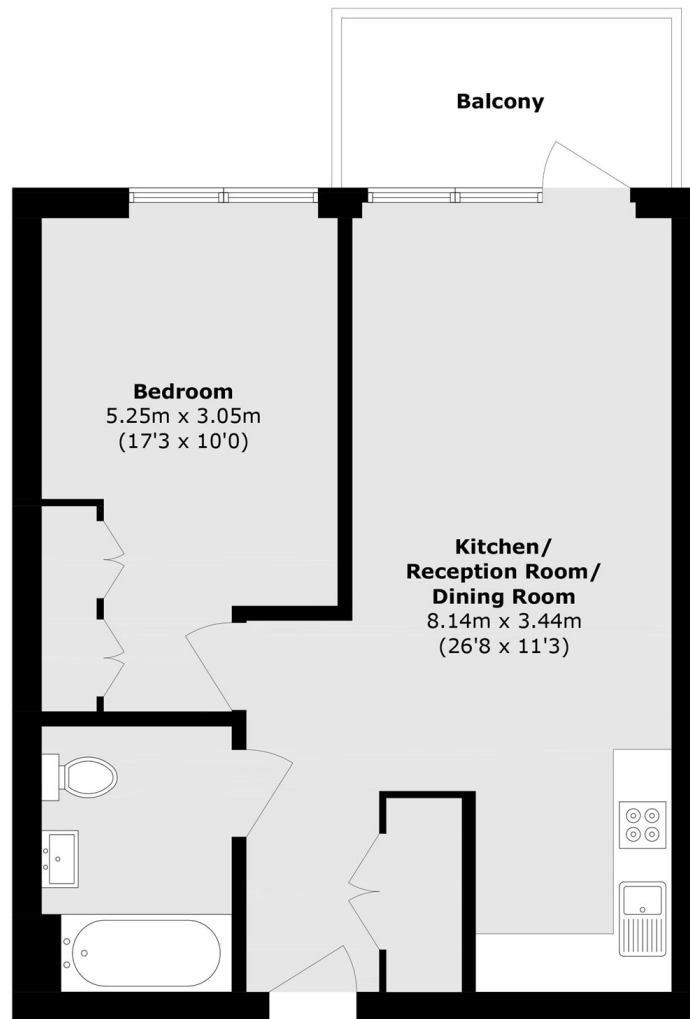
Situated in the heart of Kingston, Yorke House is a highly sought after residential development, thoughtfully designed and built to an exceptional standard. This beautiful apartment boasts a generous balcony with views over the manicured gardens, offering a tranquil retreat in the heart of town. Residents will enjoy an impressive range of on site amenities including elevators, a fully equipped gym, concierge service and even a private cinema room. It's no surprise that Yorke House is one of Kingston's most desirable developments.

Centrally situated within Kingston Upon Thames, Yorke House, Wheatfield Way, is ideally positioned for Richmond Park, the River Thames, Kingston mainline train station and the areas extensive shopping and leisure amenities including both high street and artisan shops, independent coffee shops and fabulous bars and restaurants.

Features

- One Double Bedroom
- Private Balcony
- Concierge
- Stunning Condition
- Great Location
- Chain Free

Wheatfield Way, Kingston Upon Thames, KT1



Third Floor

Total area (approx.): 52.8 sq. m (568.3 sq. ft)

Balcony area (approx.): 6.0 sq. m (64.6 sq. ft)