



Salisburys

Tavistock, PL19 0DP
Guide Price £280,000

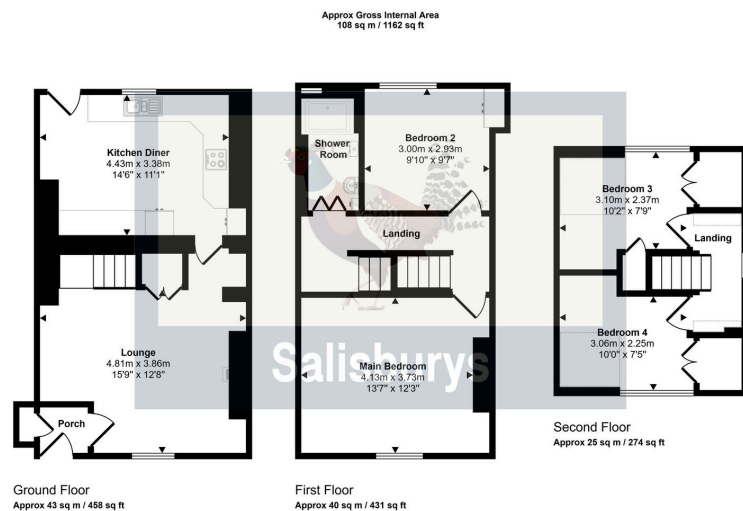
4 1 1



- Central Tavistock location
- Four bedroom character town house
- Off-street parking
- Lounge with feature fireplace
- Spacious Kitchen overlooking rear courtyard
- Courtyard rear garden
- Two bedrooms to First Floor
- Two loft bedrooms
- Family Shower Room
- Great location!



FOUR BEDROOM CHARACTER property offering the convenience of a short walk into town and the premium of **PARKING FOR TWO VEHICLES**. This mid-terrace property provides accommodation which briefly comprises of:- Entrance Lobby, Lounge with feature fireplace and solid wood flooring, Kitchen/Dining room with access to the rear Courtyard style garden, two double bedrooms and a Family Shower Room to the first floor and two further bedrooms on the second floor. The property is double glazed throughout with gas central heating. Externally this character home offers a courtyard style garden to the rear with the rarely available benefit of off street private parking for two vehicles. This property offers character, four bedrooms and off street parking in the centre of Tavistock - not to be missed!



This floorplan is only for illustrative purposes and is not to scale. Measurements of rooms, doors, windows, and any items are approximate and no responsibility is taken for any error, omission or mis-statement. Icons of items such as bathroom suites are representations only and may not look like the real items. Made with Made Snappy 360.

Score	Energy rating	Current	Potential
92+	A		
81-91	B		81 B
69-80	C		
55-68	D		
39-54	E	47 E	
21-38	F		
1-20	G		

