



**2 Bed**

**Flat**

**located in 151 Boundary Lane**

**AiHOMES.**

# 160235BS, 151 Boundary Lane, Manchester



## £2,000 Per Month

Welcome to this charming flat located at 151 Boundary Lane, Manchester. This delightful property boasts a generous 743 square feet of living space, making it an ideal choice for individuals or small families seeking comfort and convenience in a vibrant urban setting.

The flat features two well-proportioned bedrooms, providing ample space for relaxation and rest. Each bedroom is designed to offer a peaceful retreat, ensuring a good night's sleep. Additionally, the property includes two modern bathrooms, which add to the convenience and functionality of the home, catering to the needs of busy lifestyles.

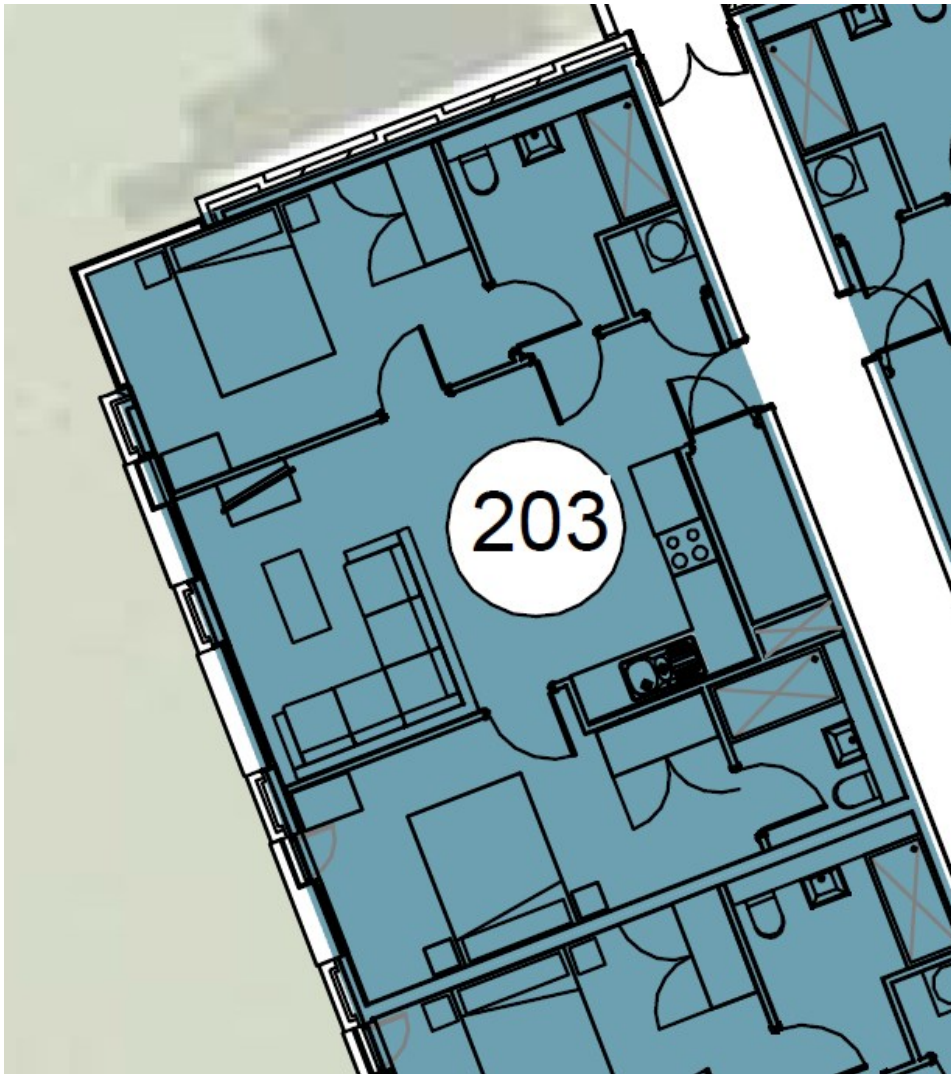
Situated in a desirable area of Manchester, this flat benefits from excellent transport links and local amenities, making it easy to explore the city and enjoy all it has to offer. Whether you are looking to indulge in the local dining scene, enjoy shopping, or partake in cultural activities, everything is within easy reach.


This property presents a wonderful opportunity for those seeking a stylish and practical living space in one of the UK's most dynamic cities. With its thoughtful layout and prime location, this flat is sure to appeal to a wide range of potential buyers or renters. Do not miss the chance to make this lovely flat your new home.





**160235BS, 151 Boundary Lane, Manchester**



Energy Efficiency Rating		
	Current	Potential
<i>Very energy efficient - lower running costs</i>		
(92 plus) <b>A</b>		
(81-91) <b>B</b>	84	84
(69-80) <b>C</b>		
(55-68) <b>D</b>		
(39-54) <b>E</b>		
(21-38) <b>F</b>		
(1-20) <b>G</b>		
<i>Not energy efficient - higher running costs</i>		
<b>England &amp; Wales</b>	EU Directive 2002/91/EC 	

**EPC Rating: B**  
**Council Tax Band: C**

**CONTACT**

5th floor, Empress Business Center  
 380 Chester Road  
 Manchester  
 M16 9EA

E: [info@aihomes.uk](mailto:info@aihomes.uk)

T: 0127 332 8069

