

Long Street, E2

£2,850 Per calendar month

A modern one bedroom apartment in a secure development. This property offers an open plan living area with a fully integrated kitchen and floor to ceiling windows, one bedroom and a private winter garden.

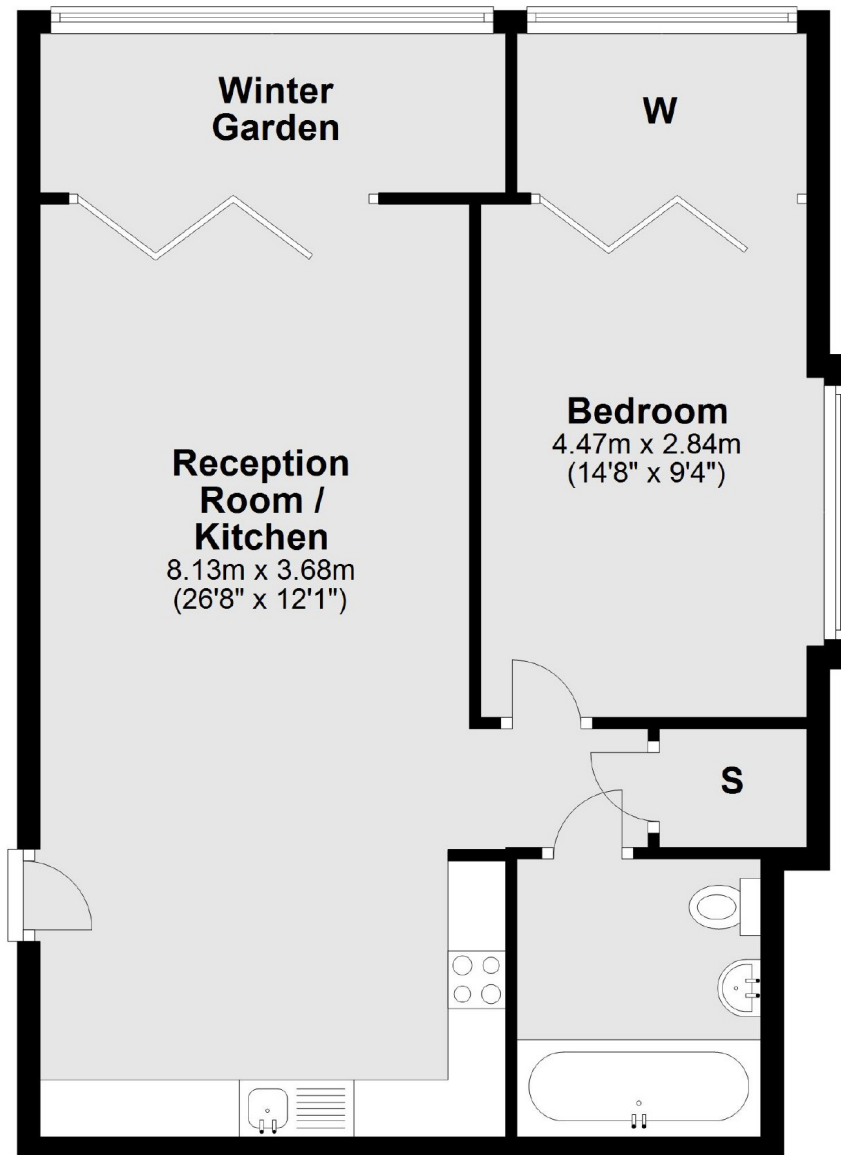
Waterson Building is located in the heart of Shoreditch which has good access to both Old Street, Liverpool Street and Shoreditch. There are a great choice of bars, cafes and restaurants in the area.

Features

- 24 Hour Concierge
- Fourth Floor
- Modern
- Winter Garden
- Furnished
- Great Location

Long Street, London, E2

Fourth Floor



Total area: approx. 63.9 sq. metres (688.2 sq. feet)