



## GLENTWORTH STREET, NW1

£999,000

Two bedrooms  
Two bathrooms  
Reception room  
Resident porter  
Share of freehold  
Energy rating: d

@marshandparsons  
marshandparsons.co.uk

MARSH &  
PARSONS



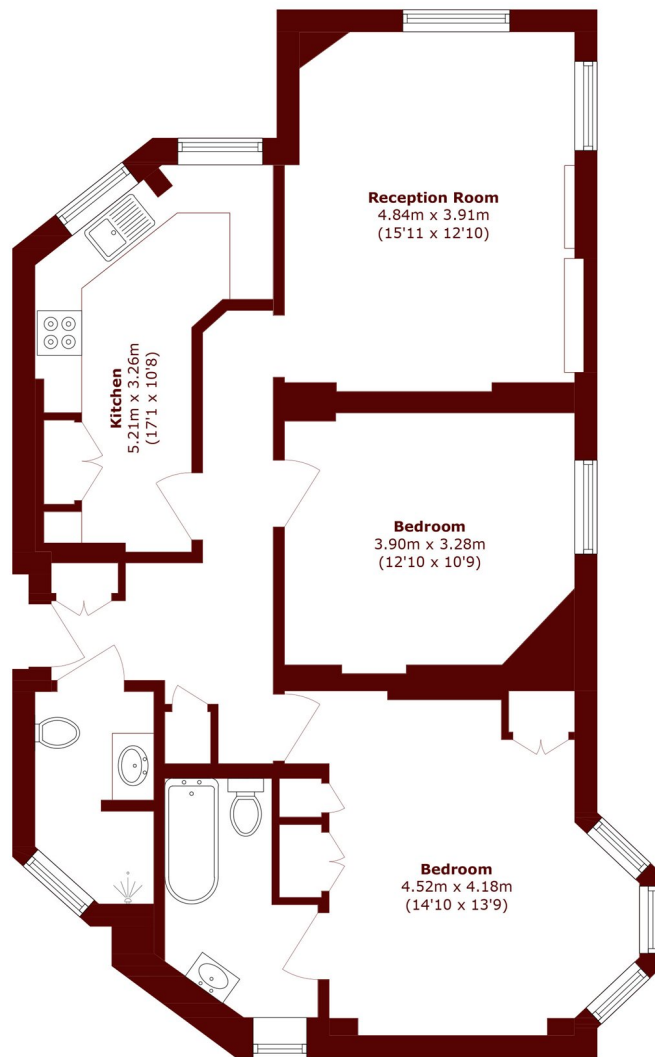
# ABOUT THE PROPERTY

A two bedroom two bathroom flat situated within this extremely popular mansion block featuring a delightful reception room located on this quiet backwater only moments from Baker Street Underground Station with its fantastic transport connections. There is also a resident porter and a Share in the Freehold.

Clarence Gate Gardens is located on Glentworth Street which runs parallel with Baker Street. Regents Park is 5 minutes walk away and Londons famous Oxford Street is also only a few minutes walk away.



# STEP INSIDE GLENTWORTH STREET



## Lower Ground Floor

Total area (approx.): 87.6 sq. m (942.9 sq. ft)

Marylebone & Mayfair  
020 7935 1775

Energy Rating: D We aim to make our particulars both accurate and reliable. However, they are not guaranteed; nor do they form part of an offer or contract. If you require clarification on any points then please contact us, especially if you're traveling some distance to view. Please note that appliances and heating systems have not been tested and therefore no warranties can be given as to their good working order

MARSH &  
PARSONS