



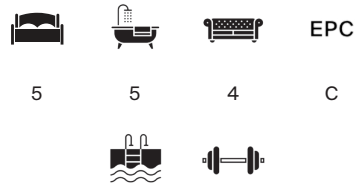
REDINGTON ROAD

Hampstead, NW3



A SUBSTANTIAL 5 BEDROOM HOUSE

An outstanding contemporary residence positioned on one of Hampstead's most sought-after roads, extending to approximately 8,964 sq ft and arranged over five beautifully designed floors.



Local Authority: London Borough of Camden

Council Tax band: H

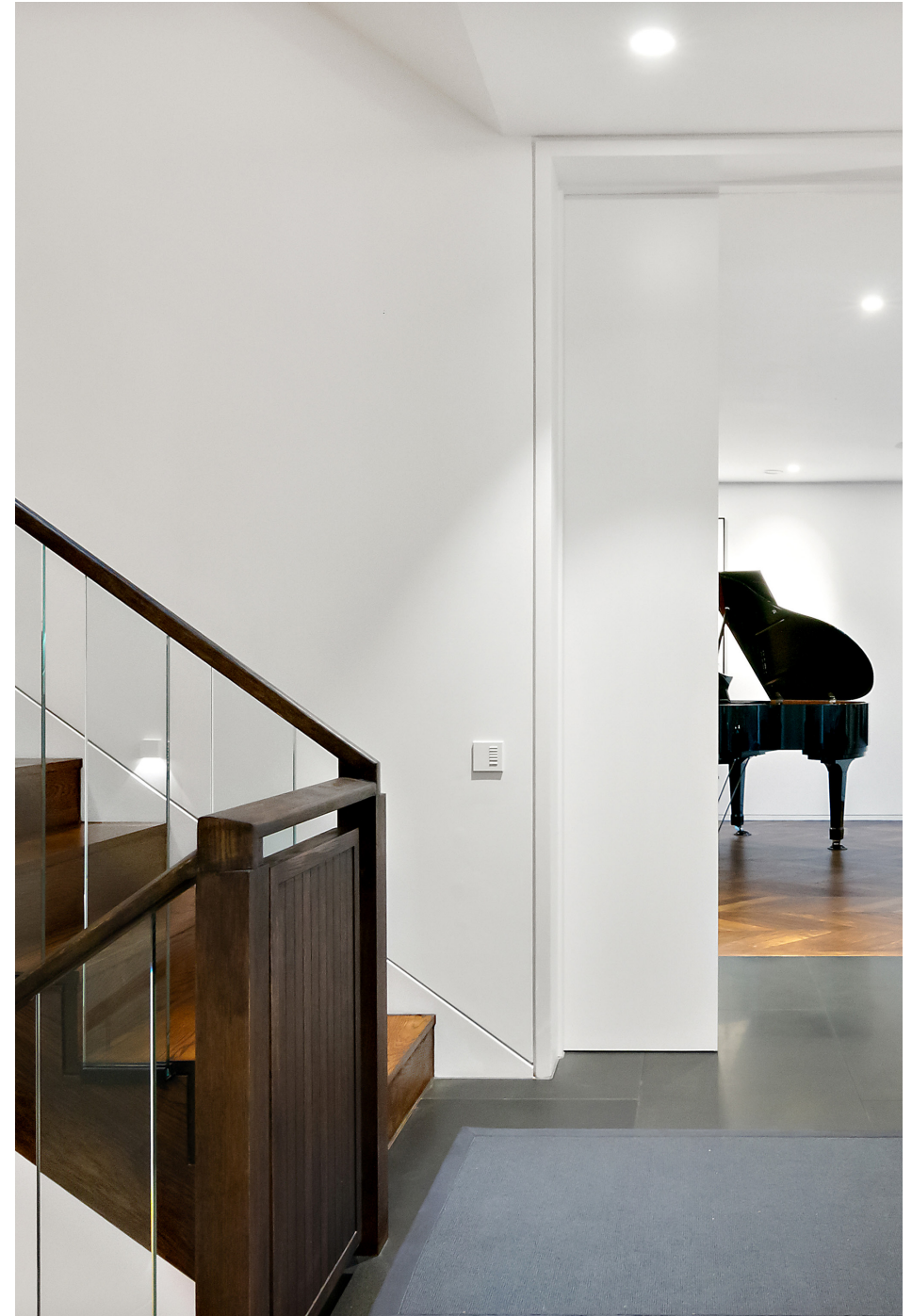
Tenure: Freehold

Asking Price: £9,999,995



This exceptional home provides a superb balance of bedroom and reception space, finished to an exacting standard with state-of-the-art lighting and integrated smart home technology throughout.

The ground floor offers a bright double-aspect reception room with direct access to a landscaped garden, alongside a study and guest cloakroom. The lower ground floor is centred around an expansive family and dining space, opening seamlessly onto a bespoke kitchen and breakfast room, with a separate utility and pantry. A versatile games room or guest suite is accessed via a sunken patio, allowing for excellent natural light.







Bedroom accommodation is arranged across the first and second floors. The principal suite occupies a prime position, featuring a generous dressing room and a luxurious en suite bathroom. There are four further bedrooms, each with their own en suite facilities.

Further benefits include a passenger lift serving four floors, gated access, and off-street parking for two cars.



The basement level is dedicated to leisure and wellbeing, featuring a spectacular indoor swimming pool complex, fully equipped gym and private cinema.

All the amenities of Hampstead Village are within easy reach, including its array of boutiques, cafés and restaurants, along with Hampstead Underground Station (Northern Line) and the open green spaces of Hampstead Heath.

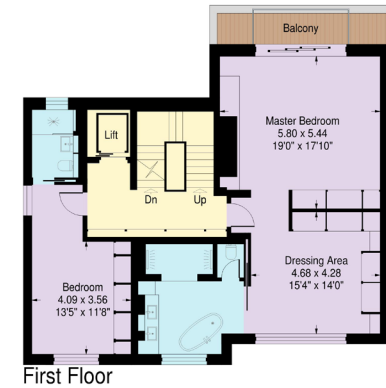
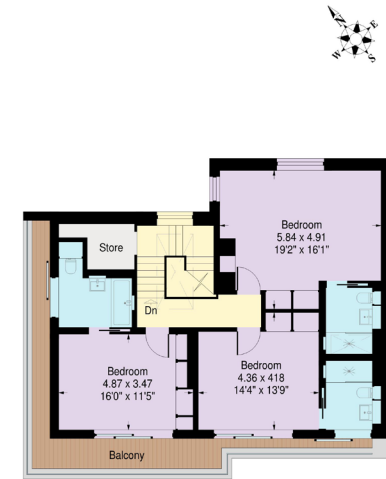
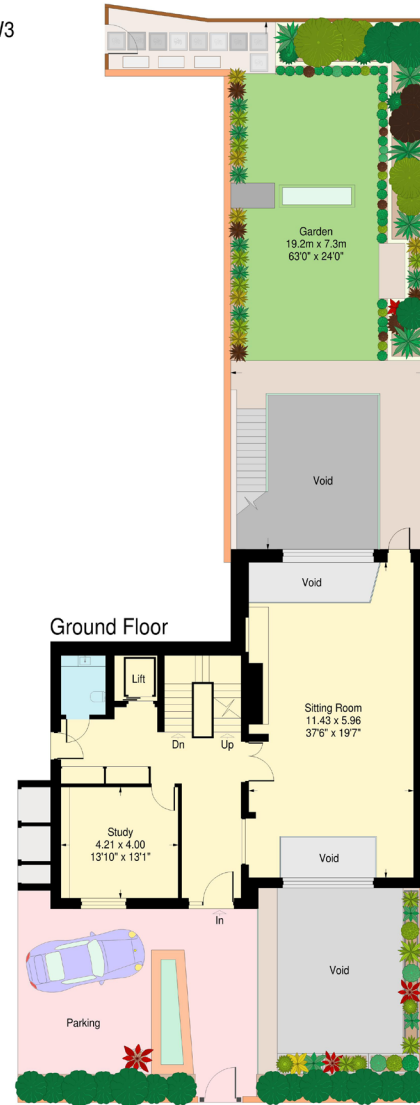
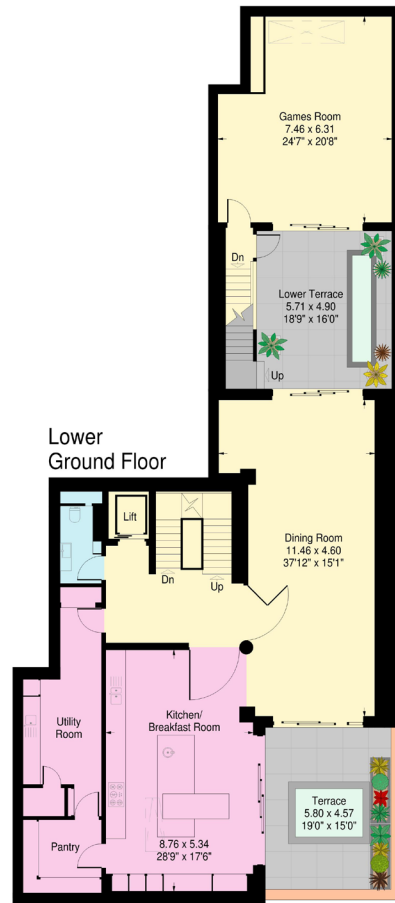
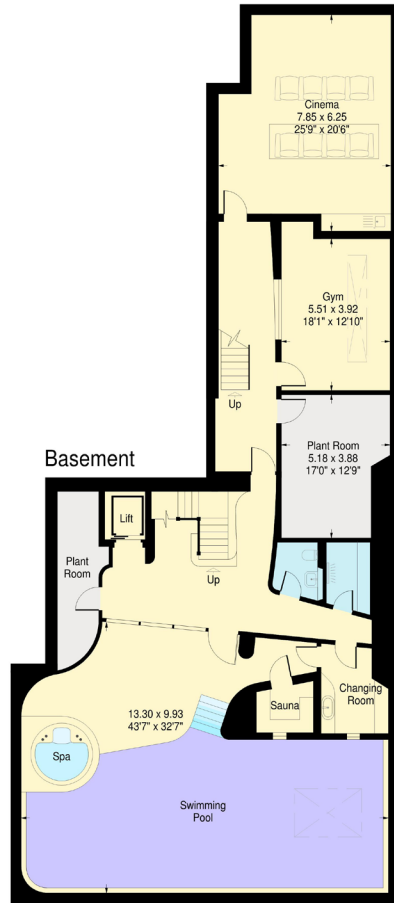






Redington Road, London NW3

Approximate Gross Internal Area:
832.8 sq.mts. / 8964 sq.ft.
(including Games Room; not including void areas)



Floor Plans produced by
Proplan
01491 842925

APPROX. SCALE
0 1 2 3 4 5 10Ft
0 1 2 3M

This plan is for guidance only and must not be relied upon as a statement of fact. Attention is drawn to the Important Notice on the last page of text of the Particulars.

Approximate Gross Internal Area = 832 sq m / 8,964 sq ft

This plan is for layout guidance only. Not drawn to scale unless stated. Windows and door openings are approximate. Whilst every care is taken in the preparation of this plan, please check all dimensions, shapes and compass bearings before making any decisions reliant upon them. (ID767266)

We would be delighted
to tell you more.

Katy Brookes
+44 2073177966
katy.brookes@knightfrank.com

Knight Frank Hampstead
58-62 Heath Street, London,
NW3 1EN

knightfrank.co.uk

Your partners in property

1. Particulars: These particulars are not an offer or contract, nor part of one. You should not rely on statements given by Knight Frank in the particulars, by word of mouth or in writing ("information") as being factually accurate about the property, its condition or its value. Neither Knight Frank nor any joint agent has any authority to make any representations about the property, and accordingly any information given is entirely without responsibility on the part of Knight Frank. 2. Material Information: Please note that the material information is provided to Knight Frank by third parties and is provided here as a guide only. While Knight Frank has taken steps to verify this information, we advise you to confirm the details of any such material information prior to any offer being submitted. If we are informed of changes to this information by the seller or another third party, we will use reasonable endeavours to update this as soon as practical. 3. Photos, Videos etc: The photographs, property videos and virtual viewings etc. show only certain parts of the property as they appeared at the time they were taken. Areas, measurements and distances given are approximate only. 4. Regulations etc: Any reference to alterations to, or use of, any part of the property does not mean that any necessary planning, building regulations or other consent has been obtained. A buyer must find out by inspection or in other ways that these matters have been properly dealt with and that all information is correct. 5. Fixtures and fittings: A list of the fitted carpets, curtains, light fittings and other items fixed to the property which are included in the sale (or may be available by separate negotiation) will be provided by the Seller's Solicitors. 6. VAT: The VAT position relating to the property may change without notice. 7. To find out how we process Personal Data, please refer to our Group Privacy Statement and other notices at <https://www.knightfrank.com/legals/privacy-statement>.

Particulars dated May 2026. Photographs and videos dated June 2026. All information is correct at the time of going to print. Knight Frank is the trading name of Knight Frank LLP. Knight Frank LLP is a limited liability partnership registered in England and Wales with registered number OC305934. Our registered office is at 55 Baker Street, London W1U 8AN. We use the term 'partner' to refer to a member of Knight Frank LLP, or an employee or consultant. A list of members names of Knight Frank LLP may be inspected at our registered office. If you do not want us to contact you further about our services then please contact us by either calling 020 3544 0692, email to marketing.help@knightfrank.com or post to our UK Residential Marketing Manager at our registered office (above) providing your name and address.