



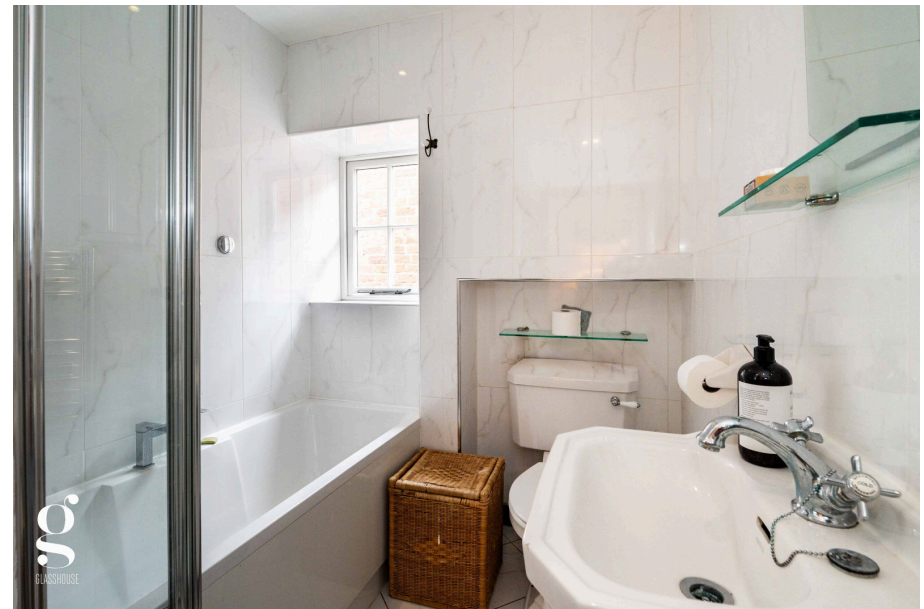
# Park Street, St. James, Hereford

Guide Price £365,000

3 1 2



- Driveway Parking For 2 Vehicles
- Semi-Detached Victorian House in St. James
- Desirable Location
- Beautiful Mature Gardens
- 2 Reception Rooms with Woodburners
- Recently Fitted Kitchen & Modern Bathroom
- Walking Distance to City Centre
- Character Features Throughout





TOTAL FLOOR AREA - 943 sq.ft. (87.6 sq.m.) approx.  
 Whilst every attempt has been made to ensure the accuracy of the floorplan contained herein, measurements of doors, windows, rooms and any other items are approximate and no responsibility is taken for any error, omission or mis-statement. This plan is for illustrative purposes only and should be used as such by any prospective purchaser. The services, systems and appliances shown have not been tested and no guarantee as to their operability or efficiency can be given.  
 Made with Metrepro ©2023

A Charming and Characterful 3 Bedroom Semi-Detached Victorian Gem, situated on Park Street in the highly regarded St. James area of Hereford. The property benefits from driveway parking for two vehicles, a well-maintained mature garden, and tastefully updated kitchen and bathroom.

