



Harmes Turner Brown

Gladsmuir Close, Walton-On-Thames, KT12 3JD



£1,795

Beautifully presented two-bedroom ground floor maisonette, situated in a highly sought-after cul-de-sac just off Rydens Avenue, one of Walton on Thames’ most favoured residential locations. Gladsmuir Close is approximately half a mile from Hersham Station, offering an excellent service to London Waterloo (around 26 minutes). Available immediately.

This unfurnished property features a generous entrance hall with built-in storage, a bright bay-fronted lounge/dining room, and a well-appointed kitchen fitted with attractive Shaker-style units, built-in oven and hob, space for standard appliances, and a stable door leading directly to the private rear garden. Both bedrooms are double rooms, with the principal bedroom benefiting from a built-in storage cupboard. The recently fitted bathroom offers a modern suite with shower over bath and a chrome heated towel rail, complemented by contemporary tiling. A separate cloakroom completes the internal layout.

Externally, the property enjoys a large private rear garden with patio and lawn areas, providing a secluded space ideal for outdoor dining. A garage is available in a nearby block and can be included for an additional cost, to be discussed with the agent.

For further details or to arrange a viewing, please contact Harmes Turner Brown Walton on 01932 222266.

INDEPENDENT ESTATE AGENTS

www.htbproperty.com

SALES • LETTINGS • MANAGEMENT

Walton Branch
45A High Street
Walton on Thames
Surrey KT12 1DH
01932 222266

sales@htbproperty.com
lettings@htbproperty.com



Registered address: 2 AC Court, Hight Street, Thames Ditton KT7 0SR Registered in England, Number 6433673

Molesey Branch
45 Walton Road
East Molesey
Surrey KT8 0DP
0208 001 8385

INDEPENDENT ESTATE AGENTS

www.htbproperty.com

SALES • LETTINGS • MANAGEMENT

Walton Branch
45A High Street
Walton on Thames
Surrey KT12 1DH
01932 222266

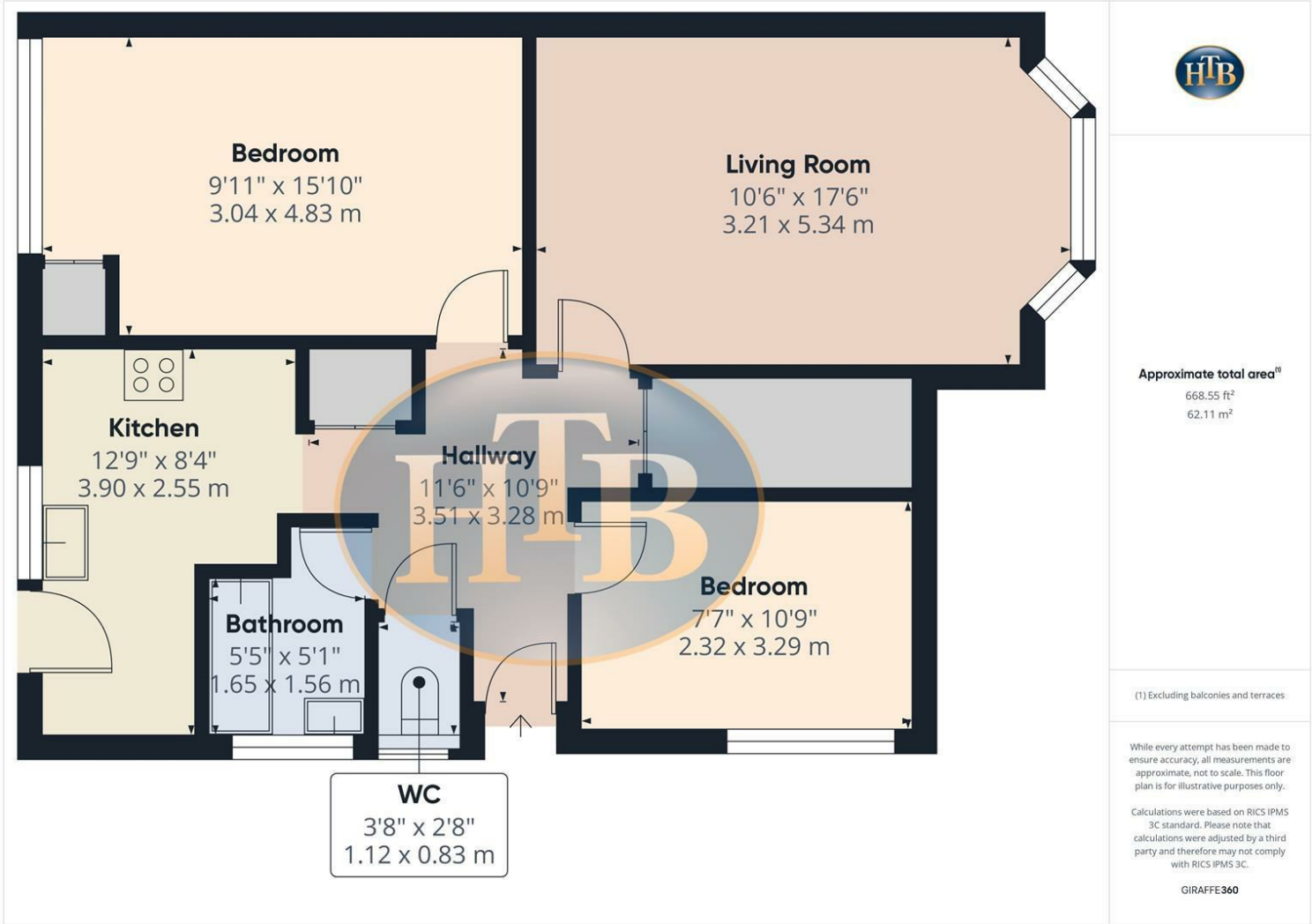
sales@htbproperty.com
lettings@htbproperty.com



Registered address: 2 AC Court, Hight Street, Thames Ditton KT7 0SR Registered in England, Number 6433673

Molesey Branch
45 Walton Road
East Molesey
Surrey KT8 0DP
0208 001 8385

Gladsmuir Close, Walton-On-Thames, KT12 3JD



- TWO DOUBLE BEDROOMS
- APPROX 1/2 MILE TO STATION
- FANTASTIC PRIVATE REAR GARDEN
- SHAKER STYLE KITCHEN WITH BUILT-IN OVEN AND HOB
- GAS CENTRAL HEATING
- UNFURNISHED
- STUNNING NEWLY FITTED BATHROOM
- GREAT SIZE LOUNGE/DINING ROOM
- RECENTLY RE-WIRED
- EPC C

