



Vincent Drive, TW17

£499,950

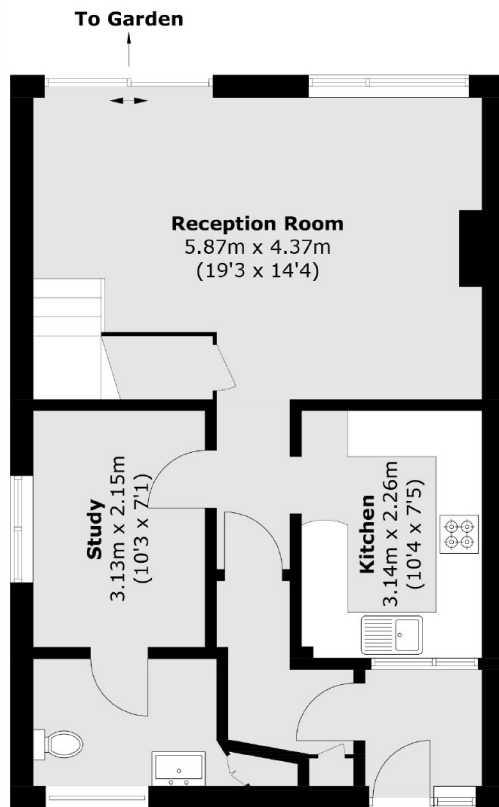
A spacious three bedroom end of terrace house with off-street parking and a wrap around garden. The property is smartly presented throughout and would make a perfect family home.

Vincent Drive is a great location, close to Upper Halliford Station which provides a direct service into London Waterloo. Upper Halliford Park is just across the road and ideal for the kids to play or to walk the dog.

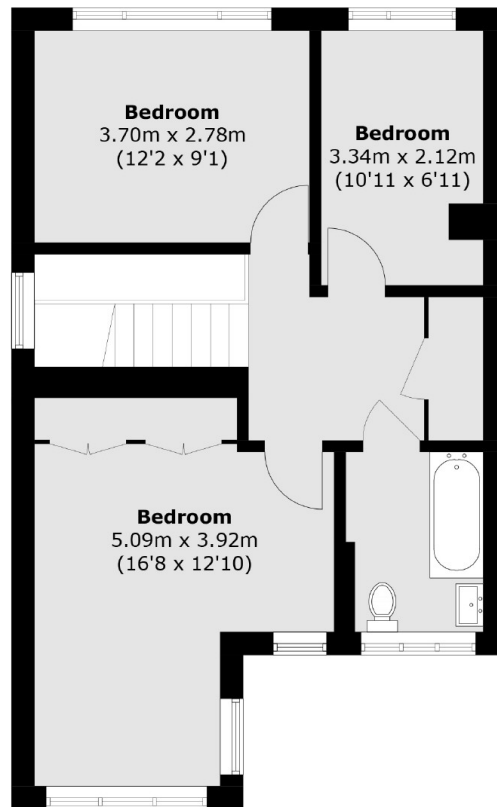
Features

- End Of Terrace
- Three Bedrooms
- Modern Kitchen
- Wrap Around Garden
- Off-Street Parking
- Great Location

Vincent Drive,
Shepperton, TW17



Ground Floor



First Floor

Total area (approx.): 104.4 sq. m (1,123.7 sq. ft)