



**HENDERSON
CONNELLAN**
ESTATE AGENTS

Milldale Gardens, Kettering NN15

"Carefree - Lateral Living"

🛏 2 🚿 1 🛋 2



"Carefree - Lateral Living"

This lovely, detached bungalow is nestled in this small select development of similar bungalows, within easy reach of shops, bus routes and Wicksteed Park. The well presented interior is all on one level to include an entrance hall, guest cloakroom, kitchen with integrated oven, hob and fridge with an adjoining utility room. The living room has an attractive fireplace, and the dining room is perfect for get togethers. The two bedrooms are double sized, and the shower room is well appointed. Gas central, UPVC double glazing and security alarm system complete the inside. Outside a block paved driveway leads to a single garage with electric roller door and the front and rear gardens are well kept arranged with easy care in mind. Easy living in a lovely setting

Living Room - 4.62m x 3.71m (15'2" x 12'2")

Kitchen - 2.9m x 2.41m (9'6" x 7'11")

Dining Room - 3.25m x 2.51m (10'8" x 8'3")

Utility Room - 2.21m x 1.57m (7'3" x 5'2")

Bedroom One - 3.71m x 3.51m (12'2" x 11'6")

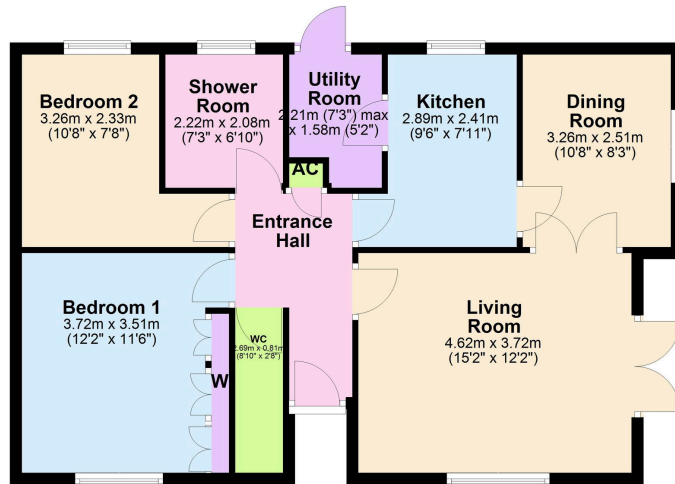
Bedroom Two - 3.25m x 2.34m (10'8" x 7'8")

Shower Room - 2.21m x 2.08m (7'3" x 6'10")



Bungalow

Approx. 74.3 sq. metres (799.8 sq. feet)



Total area: approx. 74.3 sq. metres (799.8 sq. feet)

- Detached Bungalow
- Two Double Bedrooms
- Utility Room
- Garage and Parking
- Guest WC
- No Chain
- COUNCIL TAX: D
- EPC RATING: PENDING



Disclaimer: These particulars do not form part of any offer or contract and should not be relied upon as statements or representations of fact. Any areas, measurements of distances are approximate. The text, photographs and plans are for guidance only and are not necessarily comprehensive.

15-16 Market Place, Kettering,
Northamptonshire, NN16 0AJ

