



**Lockton Close, Swineshead BOSTON PE20 3UD**



**welcome to**

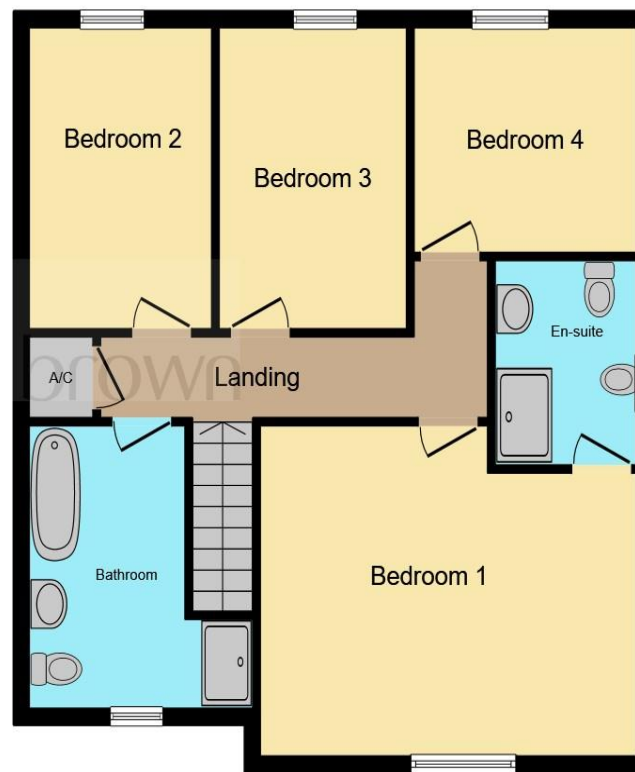
**Lockton Close, Swineshead BOSTON**

GUIDE PRICE £365,000 - £375,000. Contemporary spacious four/five bedroom detached home located on a corner plot, offering modern living and located in a quiet cul-de-sac.





**Ground Floor**



**First Floor**

### Entrance Hallway

### Lounge

16' 3" x 12' 9" ( 4.95m x 3.89m )

### Kitchen

18' 2" x 13' 4" ( 5.54m x 4.06m )

### Dining Room

12' 1" x 9' 8" ( 3.68m x 2.95m )

### Fifth Bedroom/Family Room

12' 11" x 12' 9" ( 3.94m x 3.89m )

### Cloakroom W/C

### Bedroom One

15' 11" max x 13' 7" max ( 4.85m max x 4.14m max )

### Ensuite

### Bedroom Two

8' 1" x 11' 6" ( 2.46m x 3.51m )

### Bedroom Three

11' 6" x 8' 2" ( 3.51m x 2.49m )

### Bedroom Four

9' 8" x 9' 1" ( 2.95m x 2.77m )

### Bathroom

### Loft

### Rear Garden

### Single Garage

This floor plan is for illustrative purposes only. It is not drawn to scale. Any measurements, floor areas (including any total floor area), openings and orientation are approximate. No details are guaranteed, they cannot be relied upon for any purpose and they do not form part of any agreement. No liability is taken for any error, omission or misstatement. A party must rely upon its own inspection(s). Powered by [www.focalagent.com](http://www.focalagent.com)

welcome to

## Lockton Close, Swineshead BOSTON

- GREY WINDOWS AND DOORS WITH FROSTED GLASS IN THE BATHROOM AREAS AND SIDE DOOR IN THE KITCHEN
- STUNNING HIGH END FITTED KITCHEN
- DINING ROOM WITH FRENCH DOORS TO EXTENSIVE DECKING TO THE REAR
- CLOSE TO LOCAL AMENITIES
- OFF ROAD PARKING FOR 5-6 CARS WITH A SINGLE GARAGE

Tenure: Freehold EPC Rating: C  
Council Tax Band: D



Please note the marker reflects the  
postcode not the actual property

**view this property online** [williamhbrown.co.uk/Property/BWB116222](http://williamhbrown.co.uk/Property/BWB116222)



Property Ref:  
BWB116222 - 0008

1. MONEY LAUNDERING REGULATIONS Intending purchasers will be asked to produce identification documentation at a later stage and we would ask for your co-operation in order that there is no delay in agreeing the sale. 2. These particulars do not constitute part or all of an offer or contract. 3. The measurements indicated are supplied for guidance only and as such must be considered incorrect. Potential buyers are advised to recheck measurements before committing to any expense. 4. We have not tested any apparatus, equipment, fixtures or services and it is in the buyers interest to check the working condition of any appliances. 5. Where an EPC, or a Home Report (Scotland only) is held for this property, it is available for inspection at the branch by appointment. If you require a printed version of a Home Report, you will need to pay a reasonable production charge reflecting printing and other costs. 6. We are not able to offer an opinion either written or verbal on the content of these reports and this must be obtained from your legal representative. 7. Whilst we take care in preparing these reports, a buyer should ensure that his/her legal representative confirms as soon as possible all matters relating to title including the extent and boundaries of the property and other important matters before exchange of contracts.

William H Brown is a trading name of Sequence (UK) Limited which is registered in England and Wales under company number 4268443, Registered Office is Cumbria House, 16-20 Hockliffe Street, Leighton Buzzard, Bedfordshire, LU7 1GN. VAT Registration Number is 500 2481 05.



william h brown



**01205 351010**



Boston@williamhbrown.co.uk



14 Wide Bargate, BOSTON, Lincolnshire, PE21 6RH



**williamhbrown.co.uk**