



## Linden Mews, W2

£6,500 Per calendar month

**Dexters**



## Linden Mews, W2

This three double bedroom house is arranged over two floors with a large semi open plan reception room and two bathrooms.

Within the gated development there is a large living room, a semi open plan kitchen and a separate WC on the ground floor of the property.

There is also access on the ground floor to a garage which has been converted to a third bedroom/studio. On the first floor of the property there are two large bedrooms, both of which have en suite bathrooms.

The property is located on a quiet gated mews just off the Notting Hill Gate high street, ideal for easy access to Notting Hill Gate station and all the shops, bars and restaurants of Queensway.

### Features

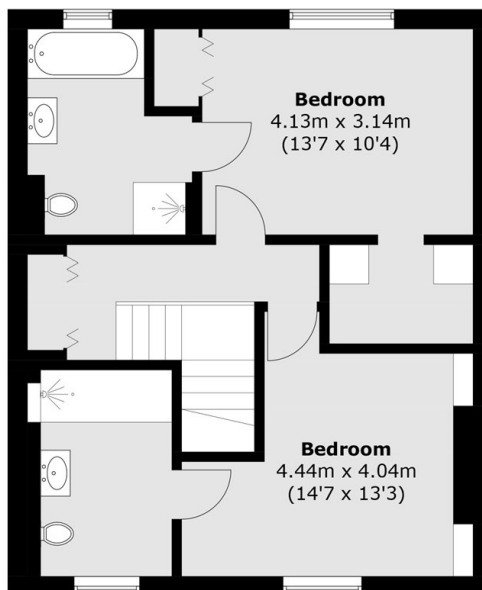
- Three Double Bedrooms
- Two Bathrooms
- Newly Refurbished
- Gated Mews
- Plenty Of Storage
- Wood Flooring



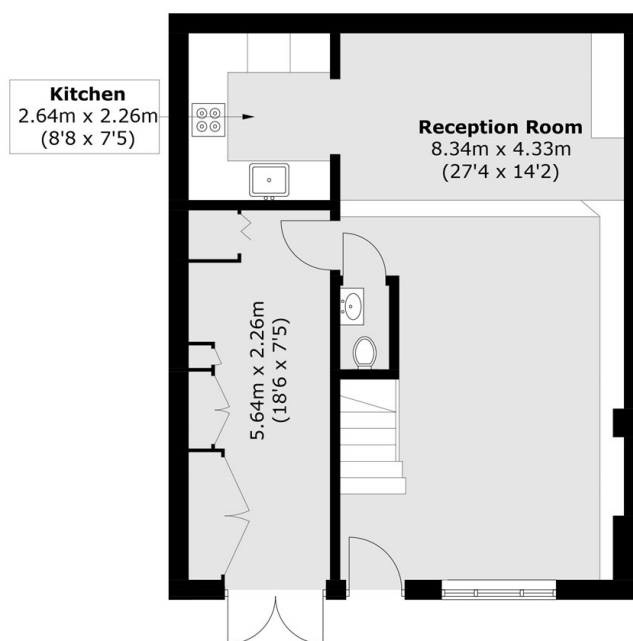




# Linden Mews, London, W2



**First Floor**



**Ground Floor**

Total area (approx.): 112.0 sq. m (1,205.5 sq. ft)