



SYMONDS + GREENHAM

Estate and Letting Agents



115 The Queensway, Hull, Yorkshire HU6 9BJ

£115,000

LOVELY ONE BEDROOM BUNGALOW - TIDY THROUGHOUT - LOW MAINTENANCE REAR GARDEN

Introducing this charming one-bedroom bungalow on The Queensway, Hull. Conveniently located close to a range of amenities including shops, supermarkets, and with good transport links, this property offers convenience and accessibility. The interior of the bungalow comprises a comfortable lounge, providing a welcoming space for relaxation. The kitchen offers functionality and practicality for your culinary needs. A well-appointed shower room caters to your everyday needs, ensuring convenience. The property features one bedroom, providing a cozy and private space for rest and relaxation. Outside, the property boasts a rear garden that is mainly gravelled, offering low maintenance and providing a pleasant outdoor area for relaxation. In summary, this one-bedroom bungalow on The Queensway is an ideal choice for those seeking a convenient and manageable living space. With its lounge, kitchen, shower room, and well-proportioned bedroom, it provides comfort and functionality. Don't miss the opportunity to enjoy a low-maintenance lifestyle in this charming property.

DO NOT DELAY, BOOK YOUR VIEWING TODAY!!!

GROUND FLOOR

LIVING ROOM

10'08 x 15'11 max (3.25m x 4.85m max)

A brilliant family room with lots of natural light.



OUTSIDE

The property benefits from a lovely rear garden that is mainly gravelled.



KITCHEN

11'05 x 6'09 max (3.48m x 2.06m max)

With a range of eye level and base level units and complimenting work surfaces, space for a tumble dryer, plumbing for a washing machine, space for an oven and a sink and drainer unit.



CENTRAL HEATING

The property benefits from storage heating.

DOUBLE GLAZING

The property has the benefit of double glazing.

TENURE

Symonds + Greenham have been informed that this property is Freehold

If you require more information on the tenure of this property please contact the office on 01482 444200.

COUNCIL TAX

Symonds + Greenham have been informed that this property is in Council Tax Band A.

VIEWINGS

Please contact Symonds + Greenham on 01482 444200 to arrange a viewing on this property.

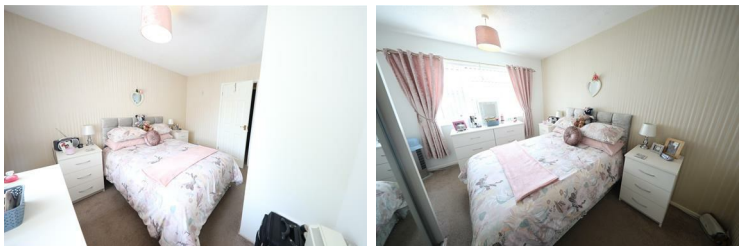
DISCLAIMER

Symonds + Greenham do their utmost to ensure all the details advertised are correct however any viewer or potential buyer are advised to conduct their own survey prior to making an offer.

BEDROOM 1

11'05 x 9'05 max (3.48m x 2.87m max)

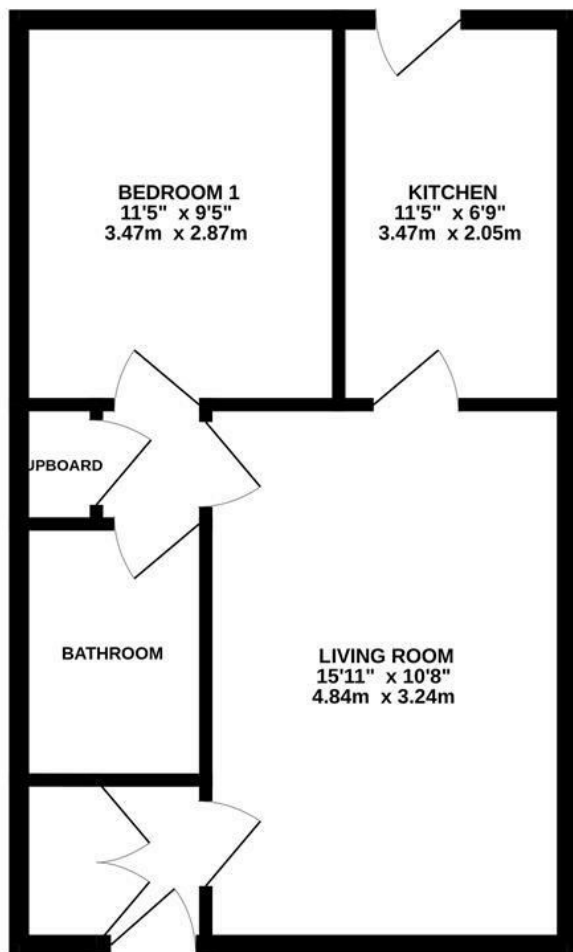
A brilliant bedroom with in built storage.



SHOWER ROOM

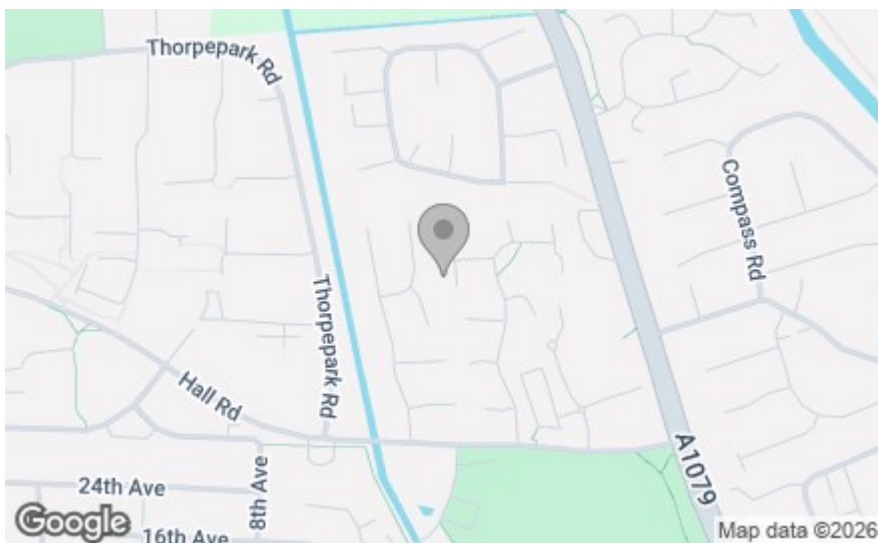
With a low level WC, a hand basin and a walk in shower.

GROUND FLOOR
439 sq.ft. (40.8 sq.m.) approx.



TOTAL FLOOR AREA : 439 sq.ft. (40.8 sq.m.) approx.

Whilst every attempt has been made to ensure the accuracy of the floorplan contained here, measurements of doors, windows, rooms and any other items are approximate and no responsibility is taken for any error, omission or mis-statement. This plan is for illustrative purposes only and should be used as such by any prospective purchaser. The services, systems and appliances shown have not been tested and no guarantee as to their operability or efficiency can be given.
Made with Metropix ©2023



Energy Efficiency Rating		Current	Potential
Very energy efficient - lower running costs			
(92 plus) A			
(81-91) B			
(69-80) C			
(55-68) D			
(39-54) E			
(21-38) F			
(1-20) G			
Not energy efficient - higher running costs			
England & Wales	EU Directive 2002/91/EC		

Environmental Impact (CO ₂) Rating		Current	Potential
Very environmentally friendly - lower CO ₂ emissions			
(92 plus) A			
(81-91) B			
(69-80) C			
(55-68) D			
(39-54) E			
(21-38) F			
(1-20) G			
Not environmentally friendly - higher CO ₂ emissions			
England & Wales	EU Directive 2002/91/EC		