



Wandsworth Road, SW8

£2,100 Per calendar month

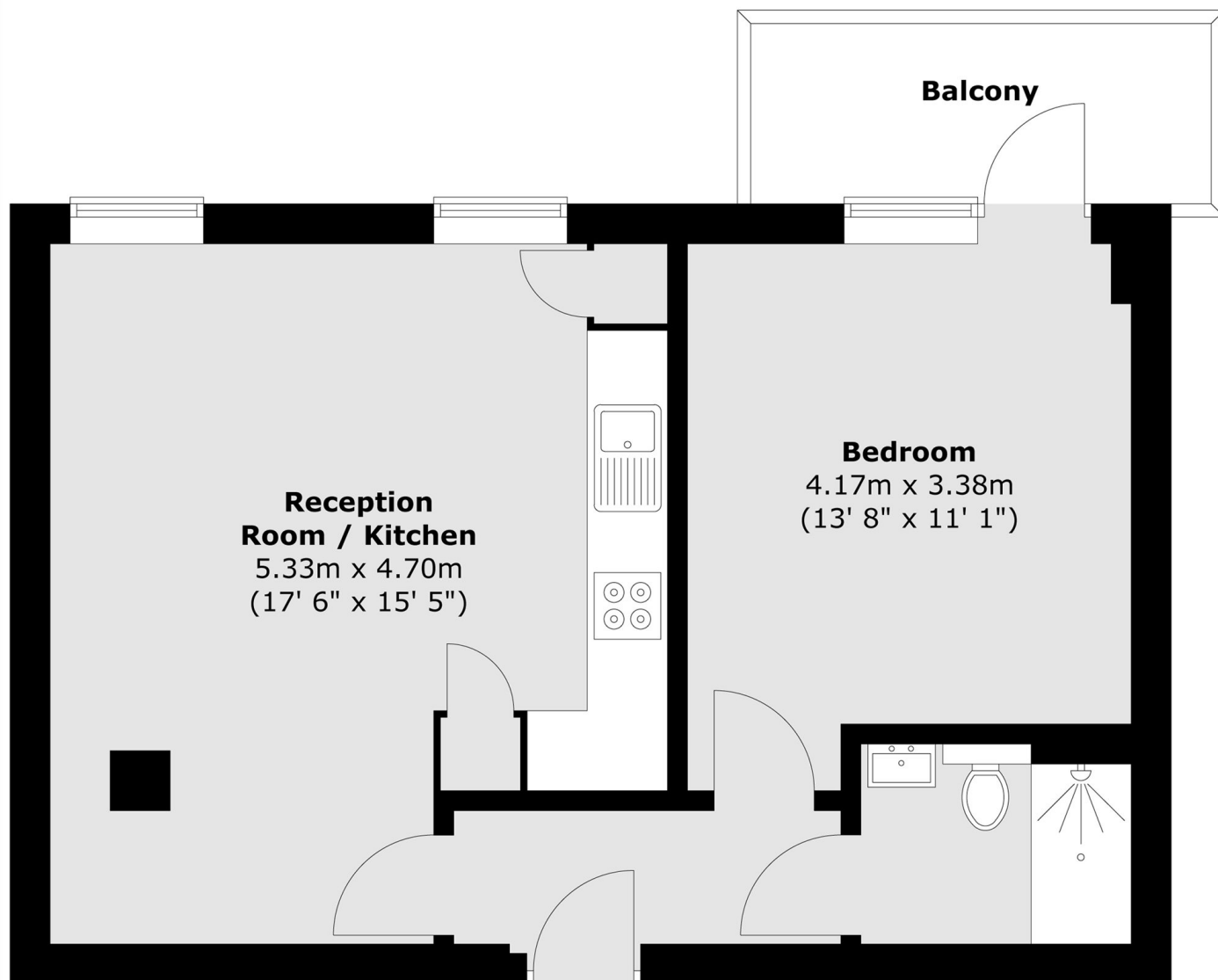
A stunning new one bedroom apartment finished to a high standard. This property consist of large open plan living area with modern fully fitted kitchen and integrated appliances, one double bedroom with access to a private balcony.

The property is in an excellent location and is close to Vauxhall and Nine Elms stations. There are many nearby amenities such as Sainsbury's, Starbucks and the new Regeneration of Nine Elms.

Features

- Newly Built Development
- One Double Bedroom
- Wooden Flooring
- Modern Shower room
- Open-Plan Kitchen
- Private Balcony

Wandsworth Road, London, SW8



Total area (approx.) : 44.2 sq. m (476 sq. ft)
Total balcony area (approx.) : 4.8 sq. m (52 sq. ft)