



25 Windmill Court, Norwich - NR3 4ET



Windmill Court

Norwich

Situated NORTH OF NORWICH, this first floor apartment occupies an established RESIDENTIAL LOCATION. Within walking distance to LOCAL BUS STOPS and SHOPS, the property is ideal for those working in Norwich City Centre. With its own ground floor entrance, steps lead to a SPACIOUS LANDING with ample storage, good size SITTING ROOM, fitted KITCHEN with APPLIANCES, TWO BEDROOMS including the main bedroom with a BUILT-IN WARDROBE, and further FAMILY BATHROOM. Finished with GAS FIRED CENTRAL HEATING and uPVC DOUBLE GLAZING. Allocated PARKING can be found close by.



Council Tax band: A

Tenure: Leasehold

EPC Energy Efficiency Rating: C

EPC Environmental Impact Rating: C

- Popular Location
- First Floor Apartment
- Easy Access to Norwich City Centre
- Spacious Sitting Room
- Fitted Kitchen
- Family Bathroom
- Two Bedrooms
- Allocated Parking

Within walking distance to the City Centre, this North City location is popular for those working in the centre, or seeking an ideal Buy to Let. With bus routes at the end of the road, a wealth of local amenities can be found on the door step including local schooling, shops, pubs and doctors surgery. Of course the City itself offers a vast array of shops and services, with rail links from the Train Station.

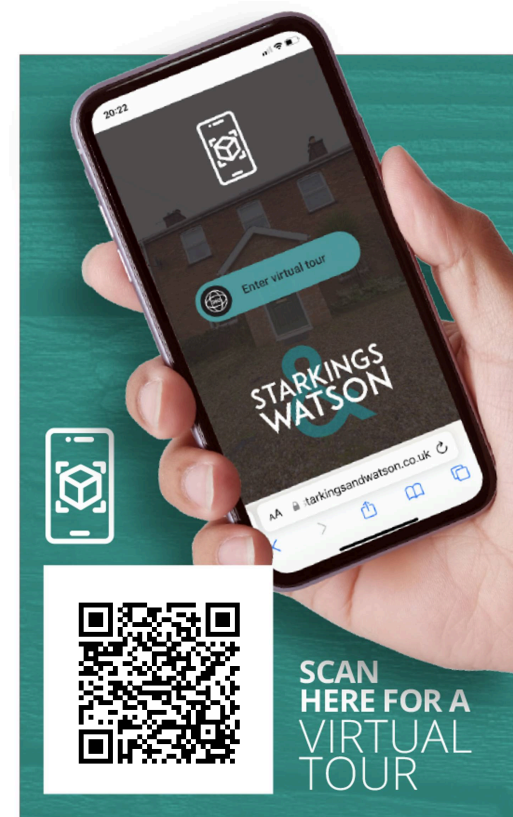


IN SUMMARY

Situated NORTH OF NORWICH, this first floor apartment occupies an established RESIDENTIAL LOCATION. Within walking distance to LOCAL BUS STOPS and SHOPS, the property is ideal for those working in Norwich City Centre. With its own ground floor entrance, steps lead to a SPACIOUS LANDING with ample storage, good size SITTING ROOM, fitted KITCHEN with APPLIANCES, TWO BEDROOMS including the main bedroom with a BUILT-IN WARDROBE, and further FAMILY BATHROOM. Finished with GAS FIRED CENTRAL HEATING and uPVC DOUBLE GLAZING. Allocated PARKING can be found close by.

FIND US

You may wish to use your Sat-Nav (NR3 4ET), but to help you...Leave Norwich heading North on Magdalen Street. Continue straight over the traffic lights onto Sprowston Road, following the road, bearing to the right. Continue towards the roundabout, turning right onto Templemere, and right onto Windmill Court. Pedestrian access on the left hand side leads to the property, which is indicated by our To Let board.







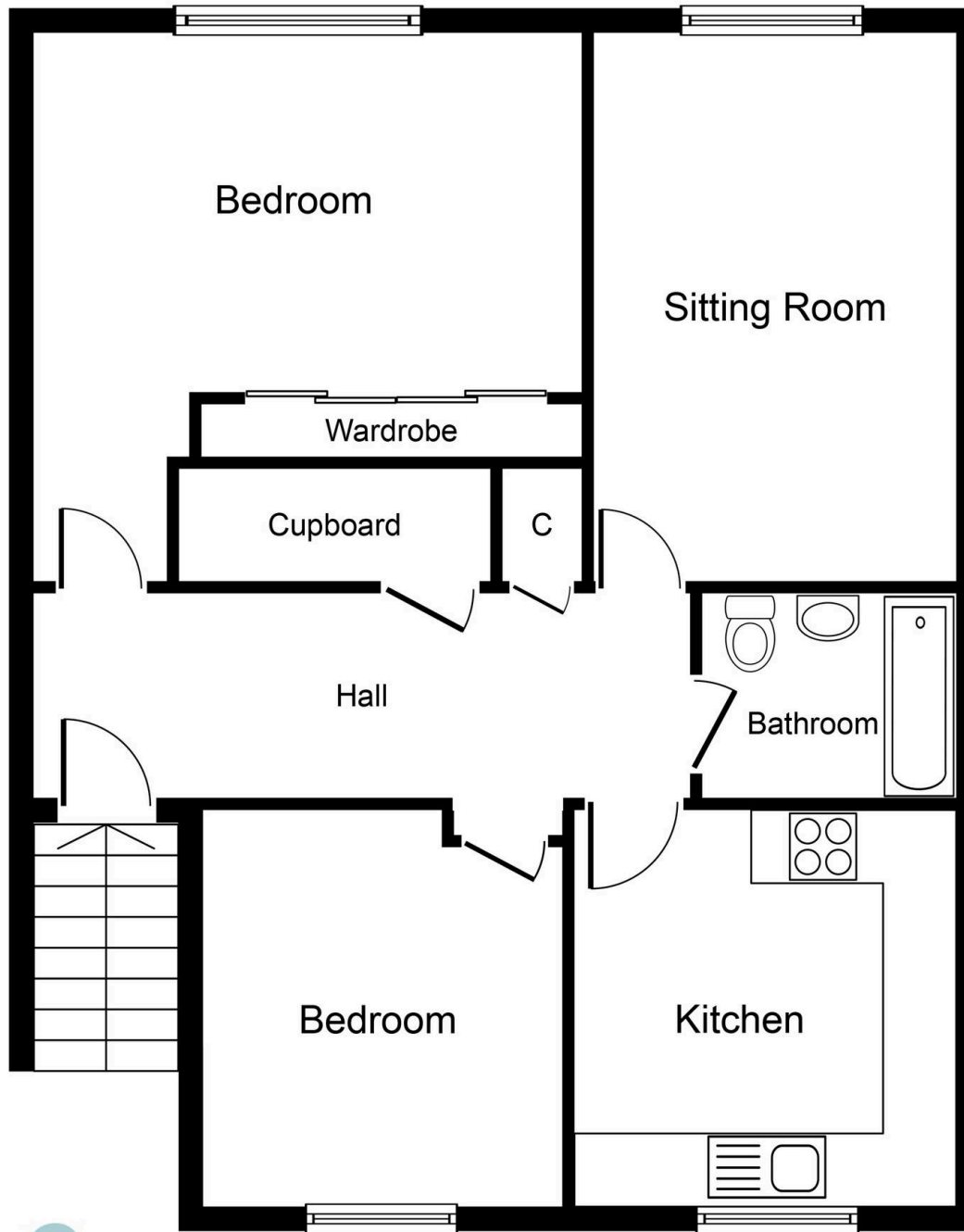
Allocated parking

1 Parking Space

On street

1 Parking Space







Starkings & Watson Hybrid Estate Agents

Roxburgh House, Rosebery Business Park Mentmore Way - NR14 7XP

01603 336226 • lettingteam@starkingsandwatson.co.uk • starkingsandwatson.co.uk/

Disclaimer: Whilst every care has been taken to prepare these sales particulars, they are for guidance purposes only. All measurements are approximate are for general guidance purposes only and whilst every care has been taken to ensure their accuracy, they should not be relied upon and potential buyers are advised to recheck the measurements.