

31 Birchtree Road, Bishopton, Renfrewshire, PA7 5FY

Offers Over £399,995

EPC Rating: C Council Tax Band: G



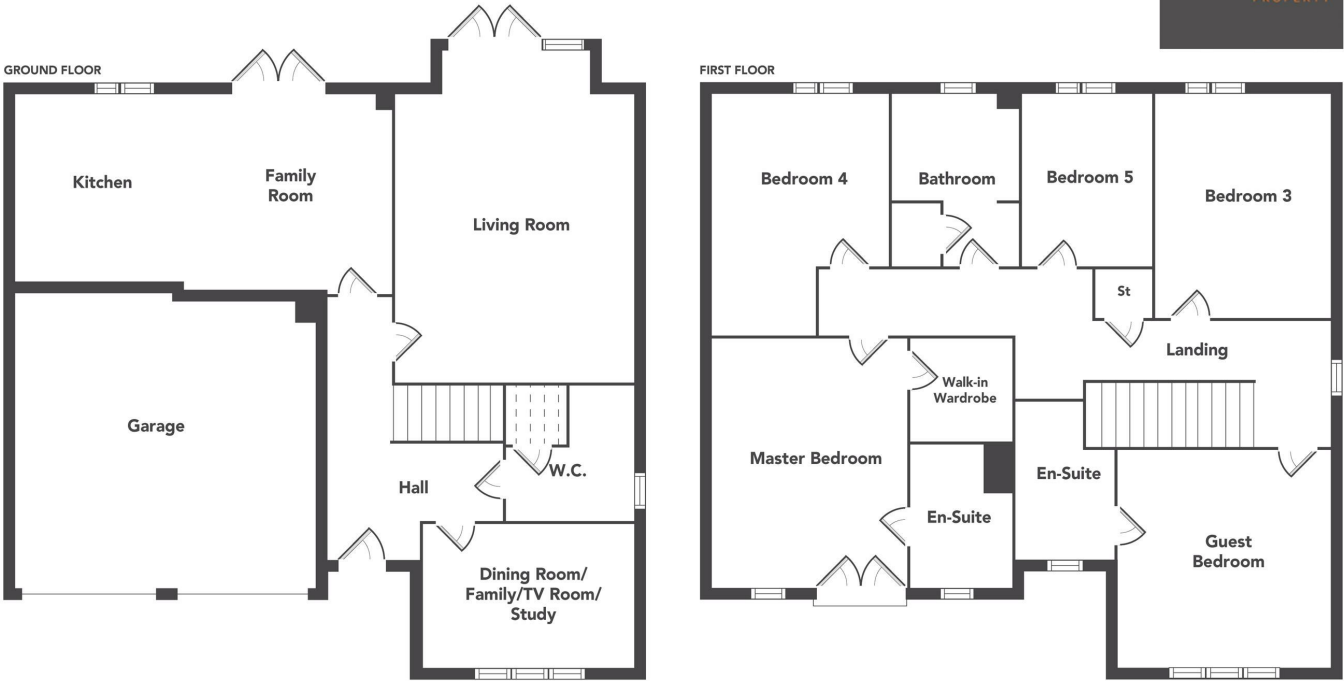
**PEACHTREE**  
PROPERTY



Peachtree Property welcome to the market this beautifully presented five-bedroom detached villa, perfectly positioned in one of Bishopton's most sought-after modern developments. Built by Stewart Milne Homes, the highly regarded Kingsmore design offers exceptional space, premium finishes, and a layout ideally suited to contemporary family living.



28 Hairst Street Hairst St  
 Renfrew  
 PA4 8QY  
 0141 577 1111  
 info@peachtreeproperty.co.uk



Floorplans are indicative only - not to scale  
 Produced by Plush Plans Ltd

Energy Efficiency Rating		Current	Potential
Very energy efficient - lower running costs			
(92 plus) <b>A</b>			
(81-91) <b>B</b>			
(69-80) <b>C</b>		76	80
(55-68) <b>D</b>			
(39-54) <b>E</b>			
(21-38) <b>F</b>			
(1-20) <b>G</b>			
Not energy efficient - higher running costs			
<b>Scotland</b>		EU Directive 2002/91/EC	