

Chelston Road

Ruislip • Middlesex • HA4 9SA
Offers In Excess Of: £600,000



coopers
est 1986

Chelston Road

Ruislip • Middlesex • HA4 9SA

Situated on the sought-after Chelston Road, this three-bedroom end-terrace 'B' Type Manor home offers a fantastic opportunity for buyers looking to put their own stamp on a property. Having been extended to the rear and above the garage, the house provides excellent potential for renovation and modernisation.

CHAIN FREE

END TERRACE 'B' TYPE MANOR HOME

THREE BEDROOMS

TWO RECEPTION ROOMS

NEW BOILER INSTALLED NOVEMBER 2024

VERY SHORT WALK TO RUISLIP MANOR HIGH STREET

LARGE GARDEN

GARAGE

OFF STREET PARKING

1,229 SQ.FT.

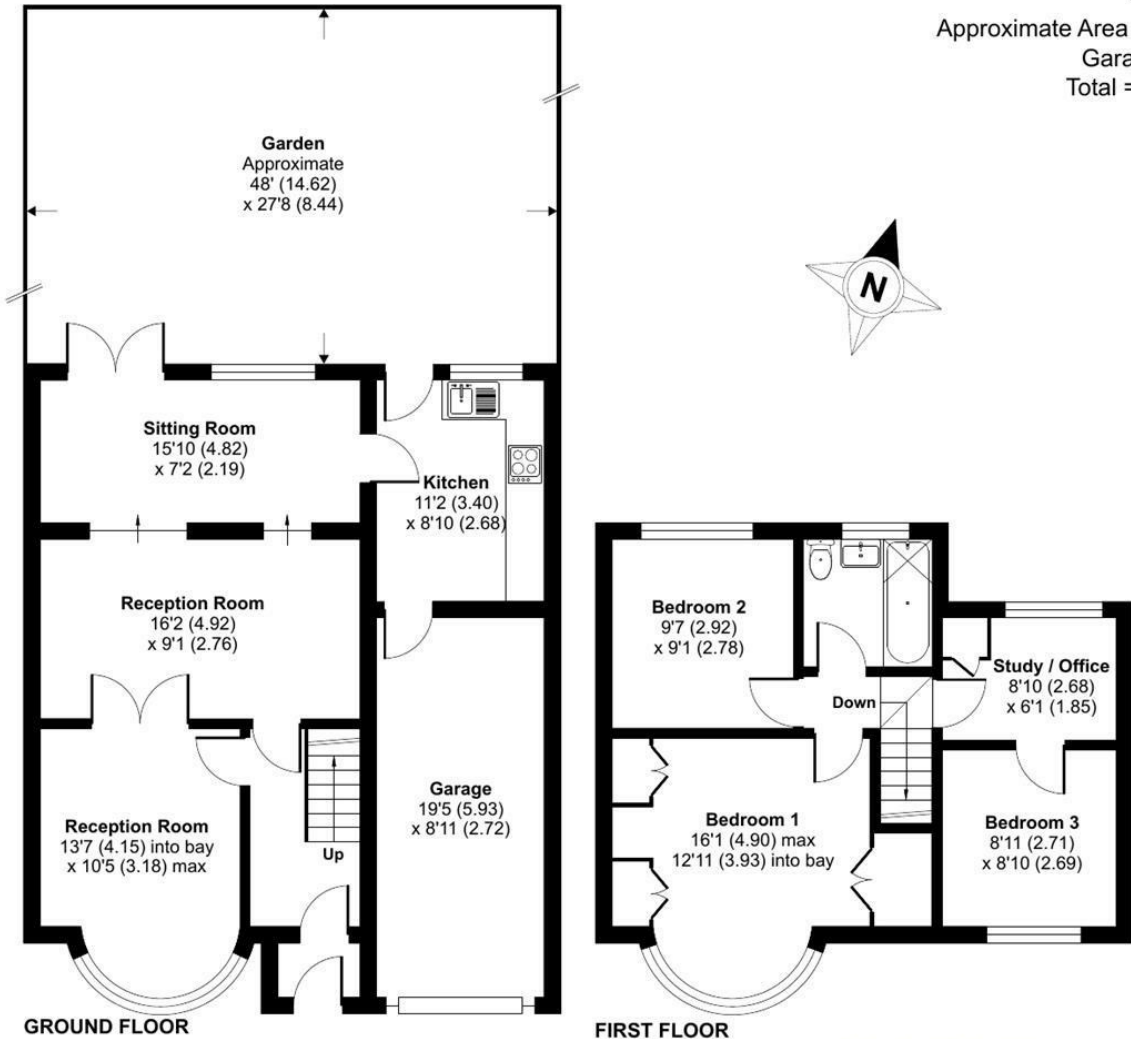
These particulars are intended as a guide and must not be relied upon as statements of fact. Your attention is drawn to the Important Notice on the last page.





Chelston Road, Ruislip, HA4

Approximate Area = 1067 sq ft / 99.1 sq m
 Garage = 162 sq ft / 15 sq m
 Total = 1229 sq ft / 114.1 sq m
 For identification only - Not to scale

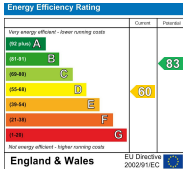


Floor plan produced in accordance with RICS Property Measurement 2nd Edition, Incorporating International Property Measurement Standards (IPMS2 Residential). © n/checom 2025. Produced for Coopers. REF: 1258270



71 Victoria Road, Ruislip Manor,
 Middlesex, HA4 9BH
 ruislipmanor@coopersresidential.co.uk

CoopersResidential.co.uk



Important Notice: These particulars, whilst believed to be accurate are set out as a general outline only for guidance and do not constitute any part of an offer or contract. Intending purchasers should not rely on them as statements or representation of fact, but must satisfy themselves by inspection or otherwise has the authority to make or give any representation or warranty in respect of the property.