

Oldfield Road

Maidenhead • Berkshire • SL6 1NQ

Guide Price: £312,000



coopers
est 1986

Oldfield Road

Maidenhead • Berkshire • SL6 1NQ

A beautifully presented one bedroom first floor apartment, situated within the sought after Exclusive House development on Oldfield Road. Ideally located just a short walk from Maidenhead town centre, the property enjoys easy access to an excellent selection of shops, cafés, restaurants and leisure facilities. Maidenhead railway station, served by the Elizabeth Line and Great Western Railway, offers fast and convenient connections to London, while nearby riverside walks and excellent access to the M4 make this an ideal location for commuters. The apartment comprises a spacious entrance hallway leading to an impressive 23ft open plan kitchen, living and dining room with access to a private balcony, a generous 14ft double bedroom with fitted wardrobes, and a modern bathroom. Outside, residents benefit from beautifully maintained communal gardens and the added convenience of a secure gated underground car park.

One bedroom apartment

First floor

Gated development

Walking distance to local amenities

23ft kitchen/living/dining room

14ft main bedroom

Modern family bathroom

Private balcony

Allocated parking

Well kept communal gardens

These particulars are intended as a guide and must not be relied upon as statements of fact. Your attention is drawn to the Important Notice on the last page.

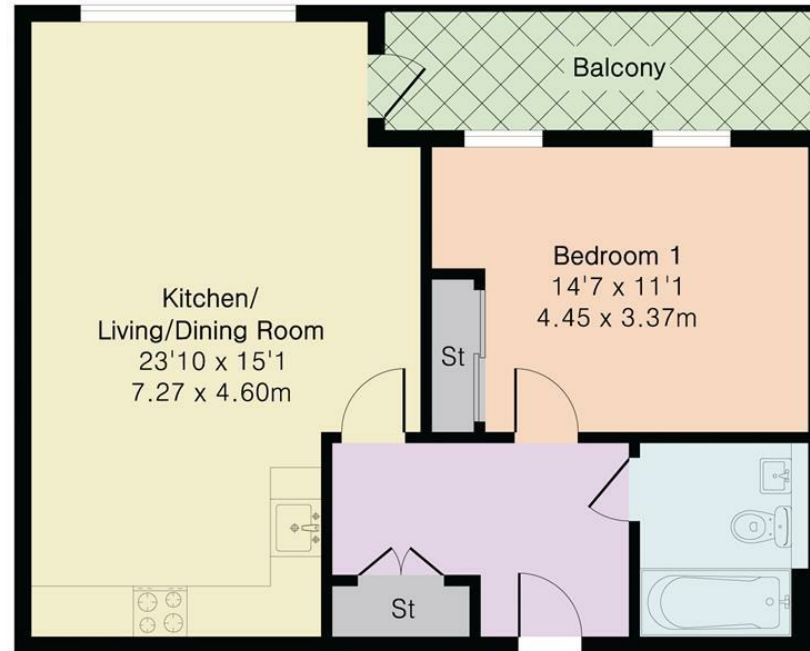




Exclusive House, Oldfield Road, Maidenhead, SL6

Main House Area = 635 sq ft / 59.0 sq m

For Identification only - Not to scale



First Floor Flat

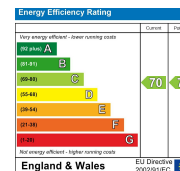


Floor plan produced in accordance with RICS Property Measurement 2nd Edition. Although Pink Plan Ltd ensures the highest level of accuracy, measurements of doors, windows and rooms are approximate and no responsibility is taken for error, omission or misstatement. These plans are for representation purposes only and no guarantee is given on the total square footage of the property within this plan. The figure icon is for initial guidance only and should not be relied on as a basis of valuation.



42 Queen Street, Maidenhead,
SL6 1HZ
maidenhead@coopersresidential.co.uk

CoopersResidential.co.uk



Important Notice: These particulars, whilst believed to be accurate are set out as a general outline only for guidance and do not constitute any part of an offer or contract. Intending purchasers should not rely on them as statements or representation of fact, but must satisfy themselves by inspection or otherwise has the authority to make or give any representation or warranty in respect of the property.