



**Price**  
**£425,000**

**Freehold**

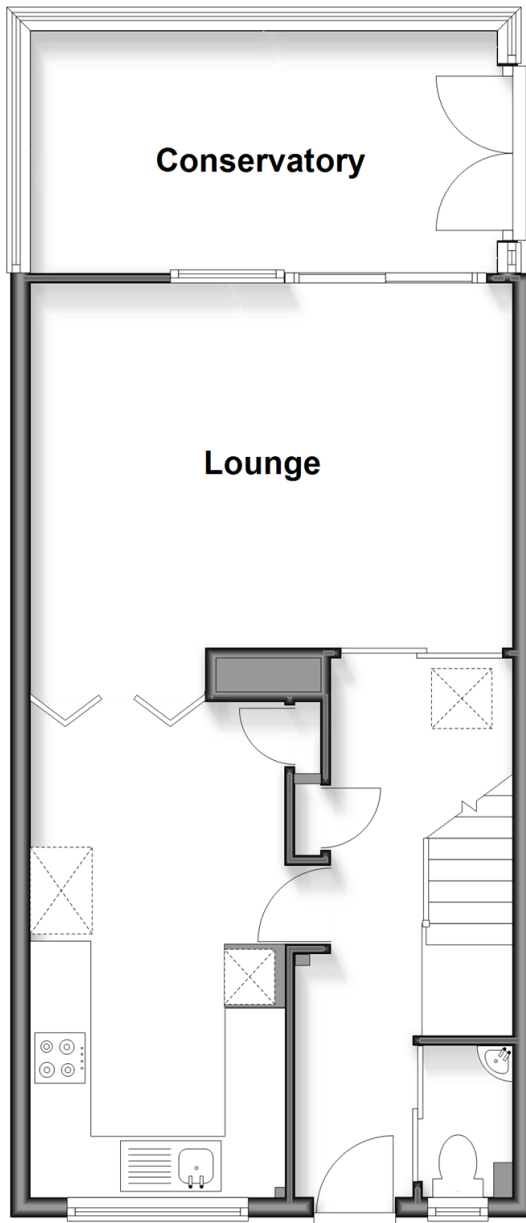
3x  1x  2x 

**Feltham Road, Redhill,  
Surrey, RH1**

**cubitt&west**  
Helping you move forwards

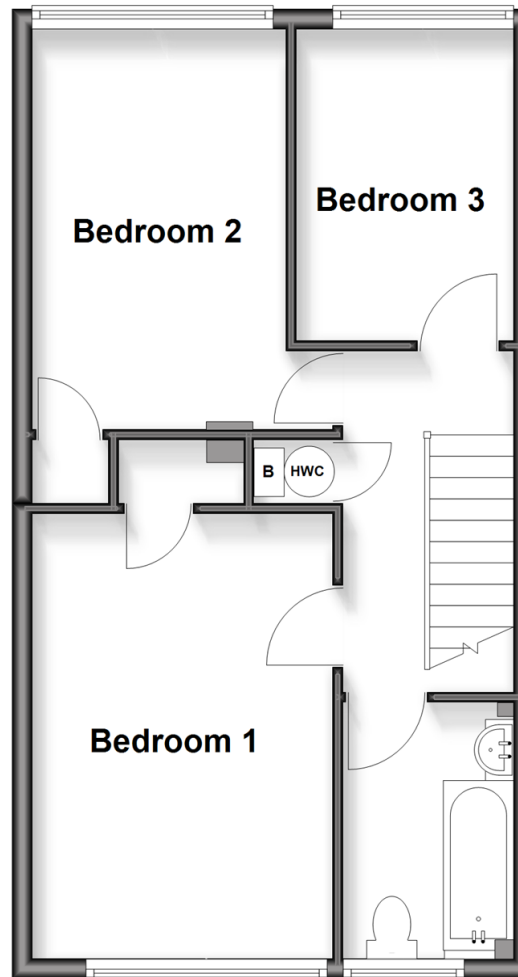
## Ground Floor

Approx. 56.8 sq. metres (611.6 sq. feet)



## First Floor

Approx. 44.1 sq. metres (474.4 sq. feet)



## Accommodation

### GROUND FLOOR

Entrance Hall

Kitchen: 17'5 x 10'0 (5.31m x 3.05m)

Lounge: 15'8 x 13'7 (4.78m x 4.14m)

Conservatory: 16'0 x 8'5 (4.88m x 2.57m)

Cloakroom

### FIRST FLOOR

Landing

Bedroom 1 : 14'5 x 9'9 (4.40m x 2.97m)

Bedroom 2: 13'1 x 10'5 (3.99m x 3.18m)

Bedroom 3: 10'6 x 7'0 (3.20m x 2.14m)

Bathroom

### OUTSIDE

Driveway

Rear Garden





## Main features

- Spacious living area ideal for family living or entertaining
- Added benefit of a bright conservatory overlooking the garden
- Conveniently located near East Surrey Hospital and picturesque Earlswood Lake
- Ample on and off street parking spaces
- Excellent potential to extend (SSTP)



### Nearest Schools

Primary Schools: Salfords Primary 0.6 miles, St John's Primary 1.0 miles, Brambletye Junior School 1.0 miles  
Secondary Schools: Cornfield School 0.0 miles, Reigate School 1.0 miles, Dunottar Day School for Girls 1.1 miles, Carrington School 2.3 miles



### Transport Information

Train Stations: Earlswood 0.8 miles, Salfords 1.0 miles, Redhill 1.7 miles



### Address

Feltham Road, Redhill, Surrey, RH1



### Directions

For directions to this property please contact us.





**cubitt&west**  
Helping you move forwards

Call Redhill Branch 01737 778866 ■ [cubittandwest.co.uk](https://cubittandwest.co.uk)



■ Legal advice should be taken to verify fixtures/fittings, planning, alterations and/or lease details ■ Appliances & services are untested, dimensions are approximate and floor plans are not to scale



23411264/20251029/CFE/JB2