



7 Hesketh Court, St. Helens, WA11 8QR

Asking Price £375,000



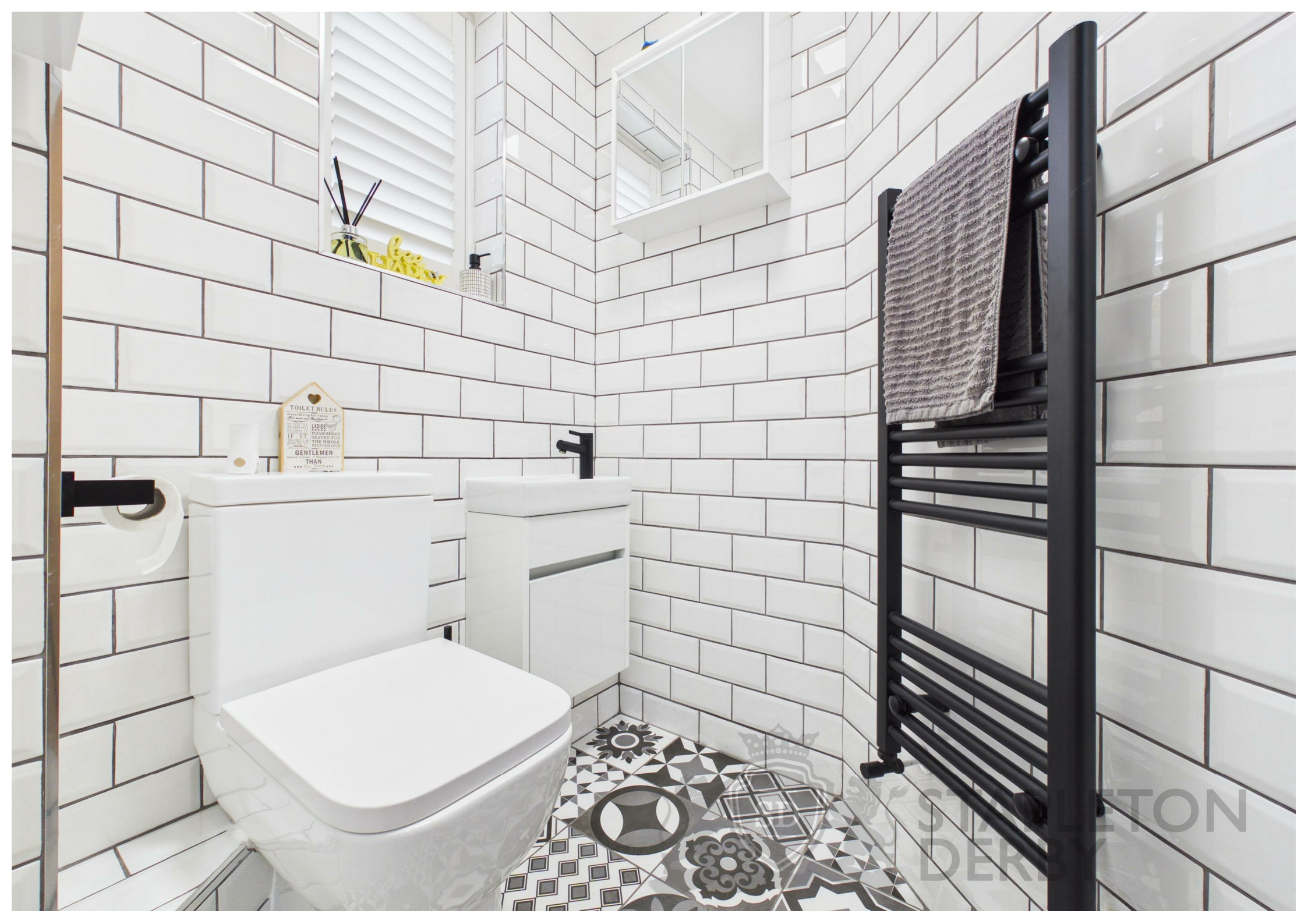
Nestled in the charming village of Rainford, this exquisite semi-detached house at Hesketh Court offers a perfect blend of comfort and tranquillity. Tucked away in an exclusive cul-de-sac, the property boasts stunning views of open farmland, providing a serene backdrop for everyday living.

Upon entering, you are greeted by a welcoming entrance hall that leads to a convenient cloakroom/WC. The spacious lounge is perfect for relaxation, while the kitchen, seamlessly connected to the dining area, this then flows into a second lounge, creating an ideal space for entertaining family and friends. Originally designed with three generous bedrooms, each with built in storage, the home has been thoughtfully adapted to offer four bedrooms, including a master suite with an en suite bathroom. The 3rd and 4th bedroom could easily be returned to one large bedroom if desired, but both are currently used as music rooms to suit the style of our Vendors. A pristine white suite bathroom is also conveniently located off the landing, along with a further storage cupboard.

The property is surrounded by well-kept gardens that are not overlooked at the rear, ensuring privacy and a peaceful outdoor space to enjoy. Additionally, a three-car driveway at the front provides ample parking for residents and guests alike. There are shutters fitted to the windows adding an extra touch of style and privacy.

With its close proximity to local schools and the picturesque countryside, this home is perfect for families seeking a tranquil lifestyle without sacrificing convenience. This delightful residence truly embodies the essence of modern living in a rural setting, making it a must-see for prospective buyers.









ETON

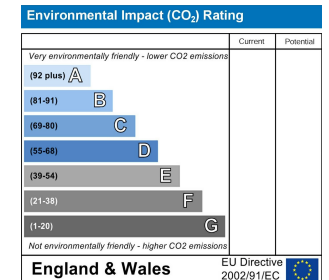
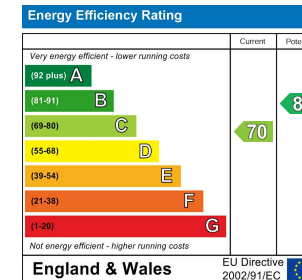
# Stapleton Derby

1 The Old Smithy, Church Road, Rainford, St Helens, WA11 8HD

Tel: 0151 430 0717 01744 889 999

office@stapletonderby.co.uk

www.stapletonderby.co.uk



## IMPORTANT NOTICE TO PURCHASERS

We endeavor to make our sales particulars accurate and reliable, however, they do not constitute or form part of an offer or any contract and none is to be relied upon as statements of representation or fact. Any services, systems and appliances listed in this specification have not been tested by us and no guarantee as to their operating ability or efficiency is given. All measurements have been taken as a guide to prospective buyers only, and are not precise. If you require clarification or further information on any points please contact us. Fixtures and fittings other than those mentioned are to be agreed with the seller.