



The Lodge, Conock Manor
£2,000 pcm



The Lodge

Conock Manor, Devizes

The Lodge – Charming Thatched Cottage

The Lodge is a delightful **three-bedroom thatched cottage** full of character and beautiful period features throughout.

Entering the property, you are welcomed by a **large entrance hall** showcasing an original open fireplace, retained as a charming display feature. To the right is a **spacious dining room** with attractive period details including **original beams** and a **bay window** overlooking the front garden, creating a bright and inviting space. Leading off the dining room is a **galley kitchen**, fitted with a **fridge, freezer and built-in oven**, providing practical and convenient cooking facilities.

Returning through the dining room and entrance hall, you will find the **downstairs bathroom**, which is fitted with a **bath and electric shower**. Also on the ground floor is the **living room**, a particularly cosy space featuring a **working log burner** and **triple-aspect period windows**, allowing natural light to flood the room while highlighting the cottage's character.

Upstairs, the property offers **three bedrooms** comprising **two doubles and one single**. The **main bedroom** benefits from **triple-aspect windows**, providing lovely views over both the **front and rear gardens**.



Externally, the **front garden is generously sized**, with a pathway leading from the front gate to the front door. The garden wraps around to the **very large rear garden**, offering excellent outdoor space. A gate from the rear garden provides access to the side of the property where **a garage and parking spaces are located**. Overall, The Lodge is a **charming period cottage** offering character, space and attractive gardens in a picturesque setting.

Rent: £2,000 per calendar month

Deposit: £2,307.69

Holding Fee: £461.53

Council Tax: Band E

Available: From 20th March

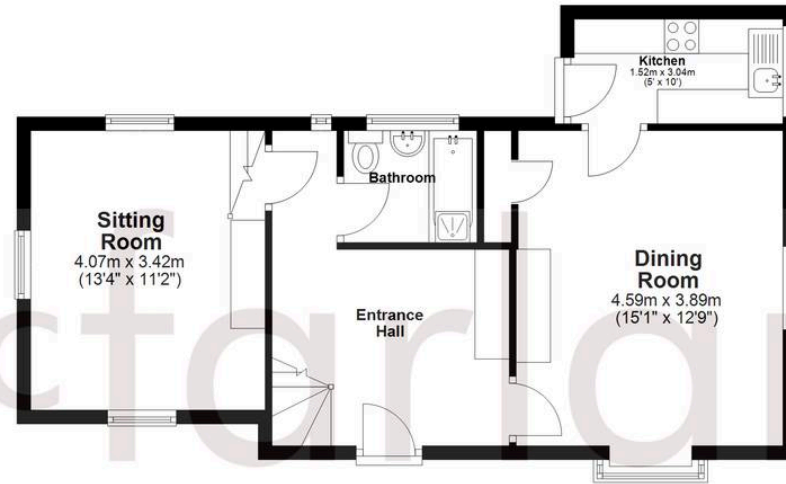
Internet & Mobile: Further information on availability and speeds can be found on the Ofcom website.

- Charming thatched cottage with beautiful period features throughout
- Large entrance hall with original open fireplace (display feature)
- Spacious dining room with original beams and bay window overlooking the front garden
- Galley kitchen with fridge, freezer and built-in oven included
- Living room with working log burner and triple-aspect period windows
- Characterful cottage offering light-filled rooms and garden views
- Large wrap-round garden



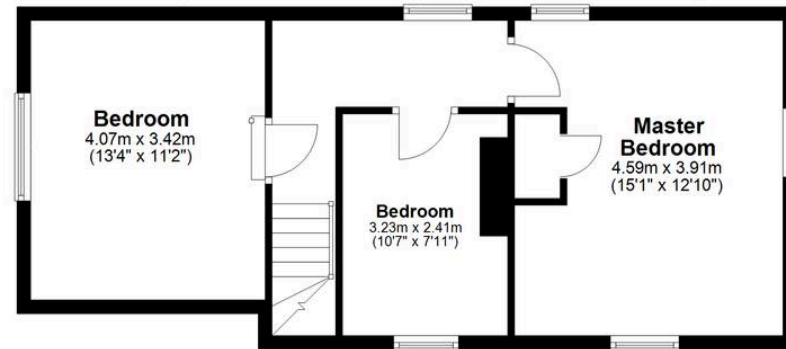
Ground Floor

Approx. 53.6 sq. metres (576.6 sq. feet)



First Floor

Approx. 48.5 sq. metres (521.6 sq. feet)



Total area: approx. 102.0 sq. metres (1098.2 sq. feet)

McFarlane Sales & Lettings

McFarlane Sales & Letting, 106 High Street - SN8 1LT

01672 514380 • marlborough@mcfarlaneproperty.com • www.mcfarlaneproperty.com/

mcfarlane
property.com