

Buy. Sell. Rent. Let.



Seamer Grove, Grimsby



3



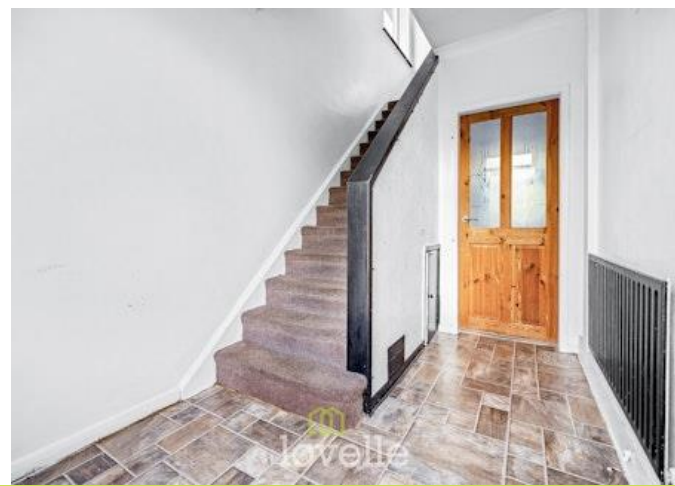
1



2

When it comes to
property it must be


lovelle



£130,000



This three-bedroom semi-detached house in a popular Grimsby location offers spacious living areas, a generous garden, driveway, kitchen and bathroom, presenting an excellent opportunity for buyers or investors seeking a home to personalise, with no onward chain.

Key Features

- Three bedroom semi-detached house
- Spacious accommodation
- Popular location
- Generous size garden
- uPVC DG & GCH
- No Chain
- EPC rating C
- Tenure: Freehold





Lovelle offer to market with NO ONWARD CHAIN, this three-bedroom semi-detached house offering a fantastic opportunity for first time buyers, families, or investors. Situated in a popular location, the property is conveniently close to public transport links, reputable schools, and a wide range of local amenities.

The home offers two well-proportioned reception rooms: a spacious lounge with an attractive bay window, and a bright dining room that opens seamlessly from the kitchen. The dining area boasts sliding doors, leading directly onto a pleasant, generous garden—ideal for relaxation and entertaining.

Upstairs, there are three bedrooms, including two comfortable double bedrooms and a single bedroom—providing flexible accommodation options. The bathroom is fitted with a modern suite, including a shower over bath, WC, sink, and a heated towel radiator.

Externally, the property benefits from its own driveway* and a sizeable garden, offering ample space and privacy. Although the property requires some modernisation, it presents a wonderful canvas for buyers to create their ideal home in a sought-after setting. Benefitting from uPVC double glazing and gas central heating. Early viewing is recommended.

Mobile and broadband

It is advised that prospective purchasers visit [checker . ofcom . org . uk](http://checker.ofcom.org.uk) in order to review available wifi speeds and mobile connectivity at the property.

Disclaimer

We endeavour to make our sales particulars accurate and reliable, however, they do not constitute or form part of an offer or any contract and none is to be relied upon as statements of representation or fact. Any services, systems and appliances listed in this specification have not been tested by us and no guarantee as to their operating ability or efficiency is given. All measurements have been taken as a guide to prospective buyers only, and are not precise. If you require clarification or further information on any points, please contact us, especially if you are travelling some distance to view.

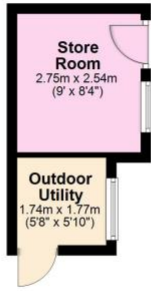
Driveway*

Whilst the front garden is utilised as a driveway/off-road parking, we must advise that there is no 'dropped curb' and permission must be granted by the council who will install a dropped curb at a cost to the homeowner at that time. It is advised for prospective purchasers to discuss this with their legal representative.



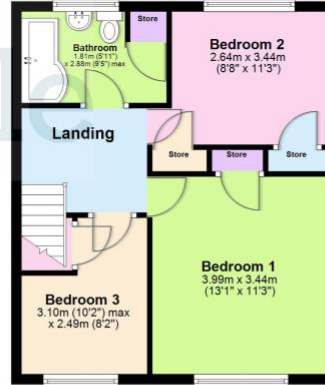
Ground Floor

Approx. 53.8 sq. metres (579.2 sq. feet)



First Floor

Approx. 43.6 sq. metres (468.9 sq. feet)



Total area: approx. 97.4 sq. metres (1048.0 sq. feet)

The provided floor plan is intended for general informational purposes only and may not accurately represent the exact dimensions, layout, or features of the property. The floor plan should not be relied upon for making decisions about purchasing, renting, or modifying the property. Actual measurements and features may vary. It is recommended that interested parties conduct a physical inspection of the property to verify the accuracy of the floor plan and obtain specific information about the property's condition, amenities, and any other relevant details. Plan produced using PlanUp.



When it comes to **property**
it must be

lovelle

01472 251918

grimsby@lovelle.co.uk

