



**Guide Price**  
**£350,000**

**Freehold**

3x  2x  1x 

**George Roche Road,  
Canterbury, Kent, CT1**

**OVER 60?**

Secure this property  
for up to **59% less!**

*Wards*  
Helping you move forwards





## Main features

- **Fantastic location within walking distance of the city centre**
- **Neutral palette throughout**
- **Two allocated parking spaces to the rear**
- **Beautiful main bedroom with a large en suite shower room**
- **Wonderful town house with adaptable and versatile living**

## Accommodation

### GROUND FLOOR

Entrance Hallway

Cloakroom

Kitchen/Diner: 16'11 x 7'11 (5.16m x 2.41m)

Lounge: 14'3 x 12'11 (4.35m x 3.94m)

### FIRST FLOOR

Landing

Bedroom 2: 12'11 x 12'5 (3.94m x 3.79m)

Bathroom: 6'9 x 6'3 (2.06m x 1.91m)

Bedroom 3: 11'2 x 6'8 (3.41m x 2.03m)

### SECOND FLOOR

Landing

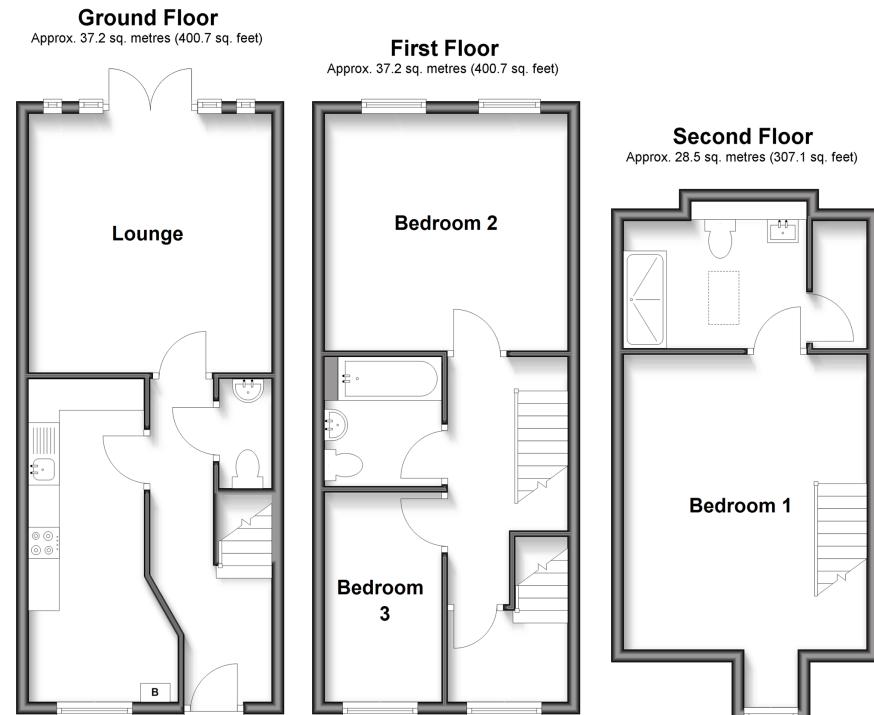
Bedroom 1: 17'0 x 12'11 (5.19m x 3.94m)

En Suite Shower Room: 9'8 x 7'8 (2.95m x 2.34m)

### OUTSIDE

Rear Garden

Allocated Parking Space x 2



**Call Canterbury - 01227 766669 ■ [wardsofkent.co.uk](http://wardsofkent.co.uk)**

- Legal advice should be taken to verify fixtures/fittings, planning, alterations and/or lease details
- Appliances & services are untested, dimensions are approximate and floor plans are not to scale
- Through a Homewise Home For Life Plan people aged 60+ can secure this property for up to 50% less, by purchasing a Lifetime Lease.



10348733/20251119/JT/JT