



Guide Price
£190,000

**Share of
Freehold**

1x  1x  1x 

**Ethelbert Road,
Canterbury, Kent, CT1**

OVER 60?

Secure this property
for up to **59% less!**

Wards
Helping you move forwards



Second Floor

Approx. 72.2 sq. metres (777.0 sq. feet)

Main features

- Open plan living space, ideal for entertaining
- Being sold with no onward chain
- Well maintained private rear garden
- Beautiful top floor apartment with stunning period features and dual aspect windows
- Within walking distance of the thriving city centre and train station

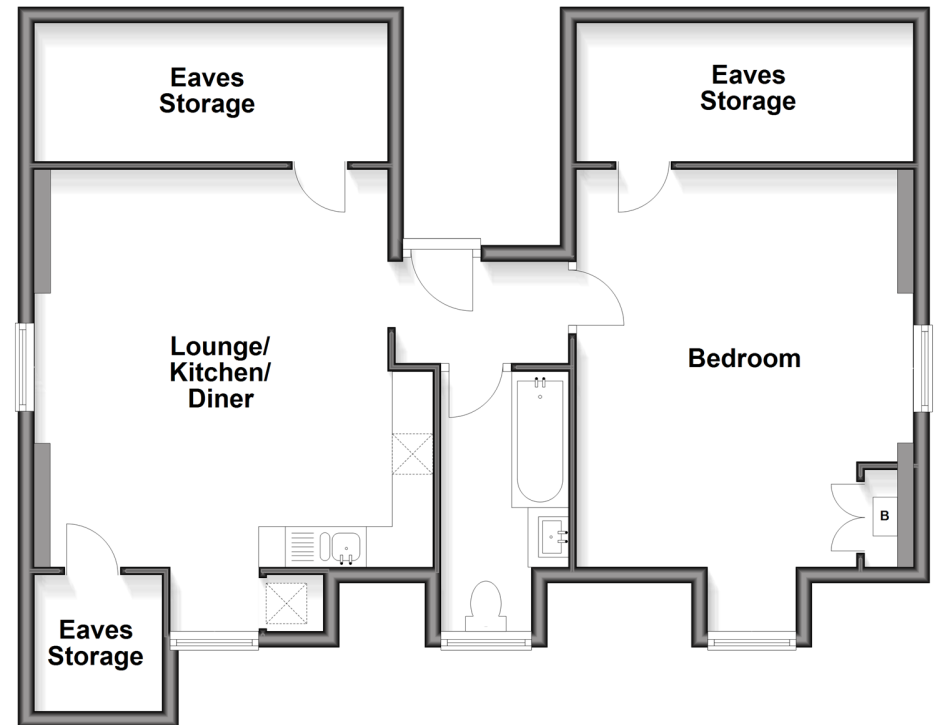
Accommodation

SECOND FLOOR

Entrance Hallway
 Lounge/Kitchen/Diner: 18'7 x 15'6 (5.67m x 4.73m)
 Bedroom : 18'11 x 13'8 (5.77m x 4.17m)
 Bathroom: 10'8 x 5'1 (3.25m x 1.55m)

OUTSIDE

Rear Garden



Call Canterbury - 01227 766669 ■ wardsofkent.co.uk

■ Legal advice should be taken to verify fixtures/fittings, planning, alterations and/or lease details
 ■ Through a Homewise Home For Life Plan people aged 60+ can secure this property for up to 59% less, by purchasing a Lifetime Lease

■ Appliances & services are untested, dimensions are approximate and floor plans are not to scale



10349399/20260110/TG/JT