



# Westbourne House

Richmond Road, TW1

£2,650 per month  
(£611.54 per week)

CHESTERTONS



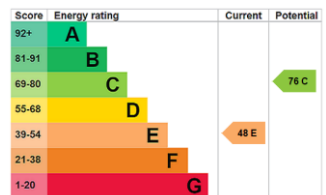
# Westbourne House

Richmond Road, TW1

- Two Bedrooms
- Separate Kitchen
- Garage
- Close to Twickenham Station



**Minimum Term:** 12 months  
**Deposit Required:** £3,057.69  
**Local Authority:** Richmond upon Thames  
**Council Tax Band:** D  
**EPC Rating:** E



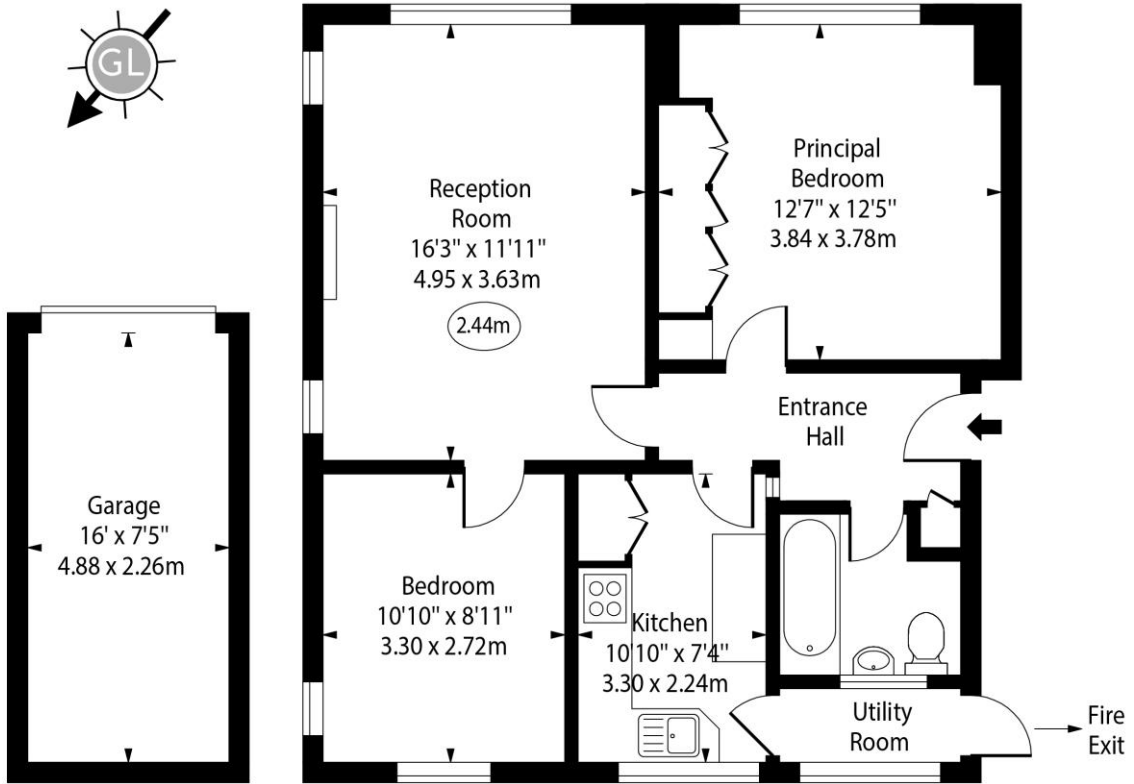
### *Chestertons Richmond Lettings*

23a Friars Stile Road  
 Richmond  
 Surrey  
 TW10 6NH  
 richmondlettingsusers@chestertons.co.uk  
 02037583333  
 chestertons.co.uk

Additional tenant charges apply (fees apply to non-AST tenancies only)  
 Tenancy Agreement Fee: £300  
 References per Tenant/Guarantor: £60  
 Inventory check (approx. £100 – £250 inc. VAT)  
[chestertons.co.uk/property-to-rent/applicable-fees](http://chestertons.co.uk/property-to-rent/applicable-fees)

# Westbourne House, TW1

○ - Ceiling Height



Ground Floor

Ground Floor

Approx Gross Internal Area 670 Sq Ft - 62.24 Sq M  
(Excluding Garage)

Every attempt has been made to ensure the accuracy of the floor plan shown. However, all measurements, fixtures, fittings, and data shown are approximate interpretations and for illustrative purposes only. Measured according to the RICS. Not To Scale.

[www.goldlens.co.uk](http://www.goldlens.co.uk)

Ref. No. 031871E

