



Kennedy Gardens, Billingham, TS23 3RL

£65,000

Welcome to this stunning penthouse apartment located in Kennedy Gardens, Billingham. Spanning an impressive 850 square feet, this property offers a perfect blend of comfort and style, making it an ideal home for individuals or small families. **NO ONWARD CHAIN**

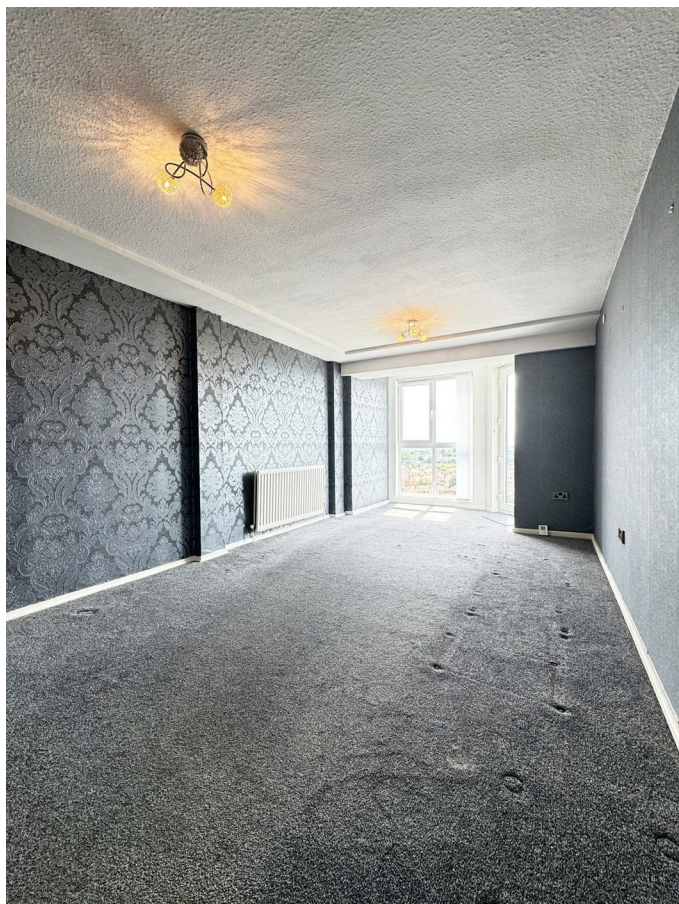
As you enter the apartment, you are greeted by a spacious reception room that is bathed in natural light, creating a warm and inviting atmosphere. The well-designed layout includes two generously sized bedrooms, providing ample space for relaxation and rest. The bathroom is thoughtfully appointed, ensuring convenience and comfort for all residents.

One of the standout features of this property is the breathtaking views it offers over the surrounding area. Imagine enjoying your morning coffee or unwinding in the evening while taking in the picturesque scenery from the comfort of your own home.

Situated in a prime town centre location, this apartment provides easy access to a variety of local amenities, including shops, restaurants, and public transport links. Whether you are looking to explore the vibrant community or simply enjoy the convenience of nearby facilities, this location has it all.

In summary, this penthouse apartment in Kennedy Gardens is a rare find, combining modern living with stunning views and a central location. It is a perfect opportunity for those seeking a stylish and convenient lifestyle in Billingham. Do not miss the chance to make this exceptional property your new home.

Living Area 22'4" x 10'11" (6.82 x 3.34)



A generously proportioned living room, beautifully bathed in natural light through large double-glazed windows and a sunshine balcony, making this a wonderful space to relax. The room is finished with fitted carpet, textured ceiling, and a central heating radiator. The balcony adds a real touch of distinction, offering an elevated outlook

Kitchen 13'4" x 8'3" (4.08 x 2.54)



A well-appointed kitchen fitted with an extensive range of light oak-style wall and base units with contrasting dark worktops, offering generous storage and workspace throughout. Equipped with an integrated electric hob, extractor canopy, and a double Electrolux oven, along with space and plumbing for a washing machine. Finished with tiled splashbacks, a double-glazed window to the front, and a striking mix of wood-effect floor tiles. A practical and spacious kitchen with plenty of character.

Bathroom



A modern and elegantly finished bathroom comprising a panelled bath with overhead shower and glazed shower screen, alongside a vanity wash hand basin with storage drawers beneath. Fully tiled in warm stone-effect ceramics from floor to ceiling, creating a clean and contemporary feel throughout. Complete with recessed spotlights and an extractor fan.

Bedroom 1 14'4" x 11'2" (4.38 x 3.42)



A spacious and well-proportioned master bedroom benefitting from two double-glazed windows which flood the room with natural light. The room is finished with fitted carpet and features a ceiling fan light fitting and central heating radiator. A comfortable and generous double bedroom with plenty of space for freestanding furniture.

Bedroom 2 9'8" x 11'0" (2.97 x 3.37)

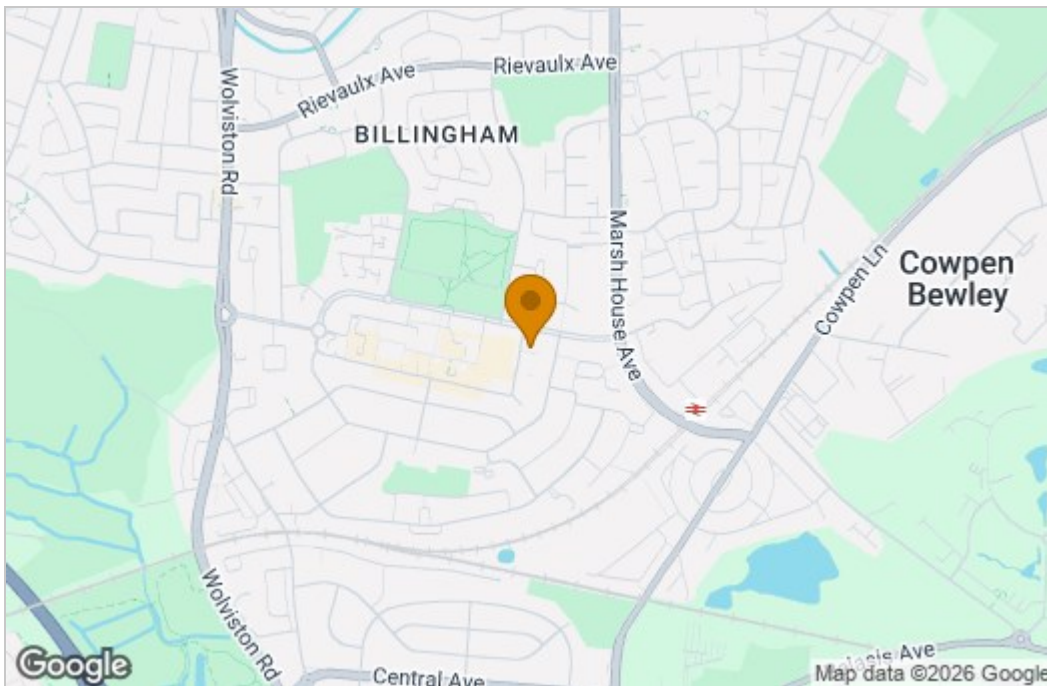


A good-sized second bedroom with a double-glazed window offering far-reaching views across the town. The room is finished with warm laminate flooring, a central heating radiator, and ceiling light fitting. A versatile space that would suit a double bedroom, home office, or guest room.

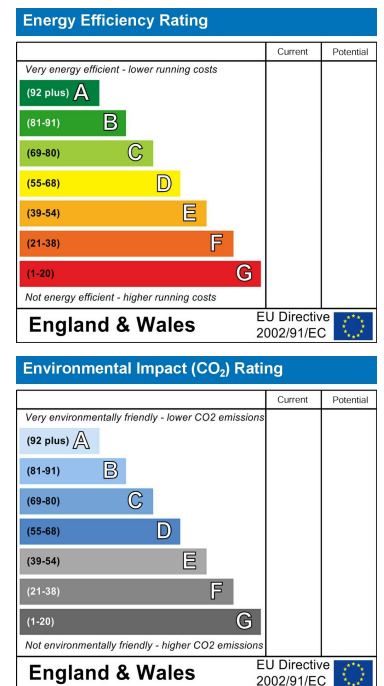
WC 4'11" x 3'10" (1.51 x 1.18)

Floor Plan

Area Map



Energy Efficiency Graph



These particulars, whilst believed to be accurate are set out as a general outline only for guidance and do not constitute any part of an offer or contract. Intending purchasers should not rely on them as statements of representation of fact, but must satisfy themselves by inspection or otherwise as to their accuracy. No person in this firm's employment has the authority to make or give any representation or warranty in respect of the property.