

# Parkheath

*Sold on Service*

---

## Allingham Court NW3

**£2,000 PCM (£462 per week) - Camden Band D**



Bright and modern 1 bedroom apartment

First floor in purpose built block

Kitchen/diner

3 piece bathroom

Moments to Belsize Park underground

Private roof terrace

Wood floor reception

Double bedroom with fitted wardrobe

Central Belsize Park location

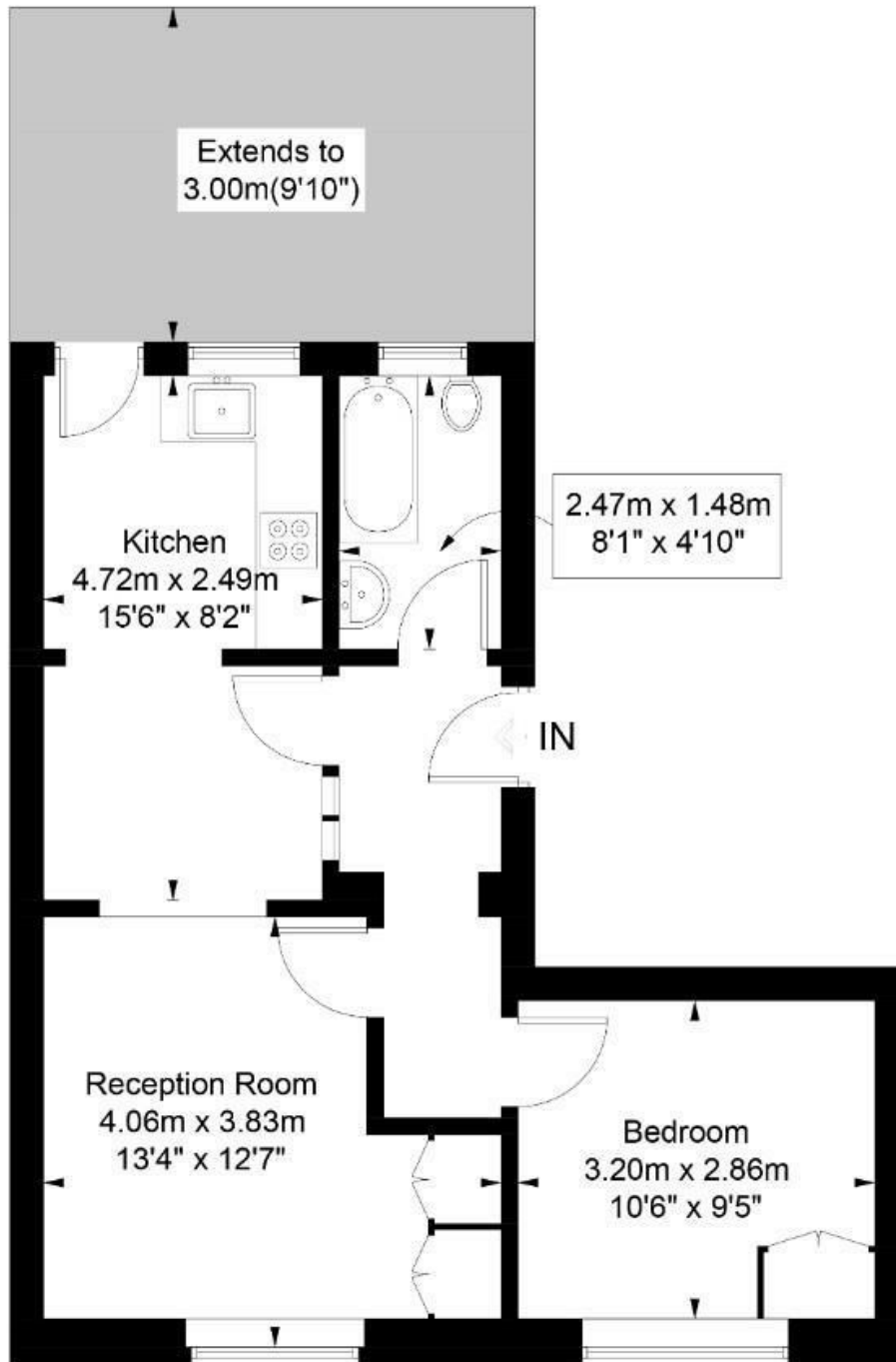
EPC: Rating C, Council Tax: Camden band D

Belsize Park Office 020 7431 3104

# Haverstock Hill



Approximate Gross Internal Area = 44.4 sq m / 478 sq ft



## First Floor

Illustration for identification purposes only, measurements are approximate,  
not to scale. FloorplansUsketch.com © 2018 (ID408870)  
ELLIE CLAIRE PHOTOGRAPHY LTD

The particulars do not constitute part of an offer or contract. The particulars, including text, photographs and plans, are for the guidance only of prospective purchasers/tenants and must not be relied upon as statements of fact. The descriptions provided therein represent the opinion of the author and whilst given in good faith should not be construed as statements of fact. Nothing in these particulars shall be deemed a statement that the property is in good condition or otherwise or that any services or facilities are in good working order. All measurements are approximate