

FREEHOLD



House - Semi-Detached (EPC Rating: D)

TUDOR GARDENS, LONDON. NW9 8RL

Asking Price

£975,000 FREEHOLD

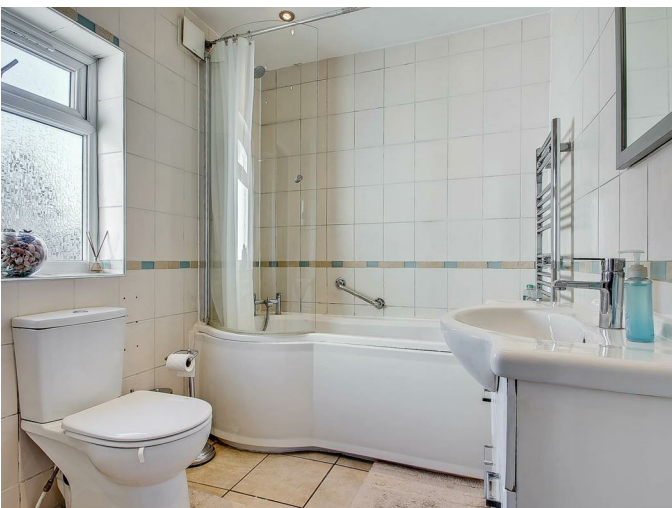
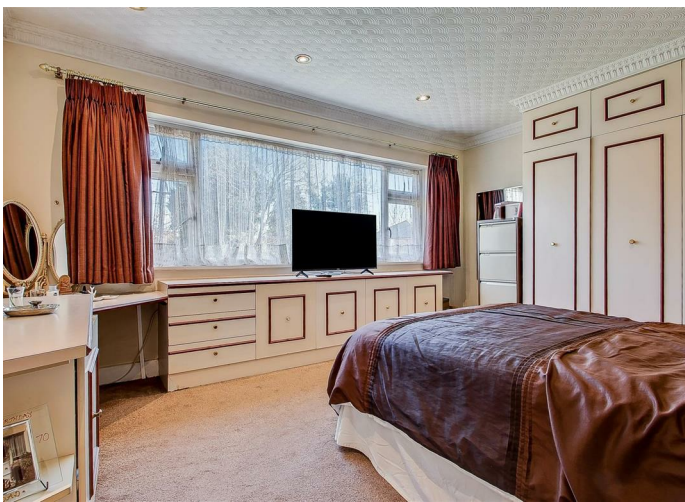


# SEMI DETACHED 5 BED HOUSE WITH GARAGE AND CARRAIGE DRIVEWAY IN LONDON NW9

Sold in under a week – one viewing only!

Thinking of selling? Let's make it happen. SUBSTANTIAL 5 BEDROOM Semi-detached family home, set on a generous plot in one of NW9's most sought-after residential locations. This well-proportioned property boasts a spacious entrance hall, a fitted kitchen, and a guest cloakroom, offering excellent family living accommodation with further scope to enhance. To the front, the property benefits from a large carriage driveway providing ample off-street parking, along with a garage and own drive. To the rear, you will find a substantial private garden, ideal for families and offering significant potential for extension. The property presents an exciting opportunity for buyers to extend to the side, rear, and into the loft (subject to the usual planning permissions), making it ideal for those looking to create a long-term family home or development project. Offered chain free, this is a fantastic opportunity not to be missed.





# TUDOR GARDENS LONDON NW9



GROUND FLOOR



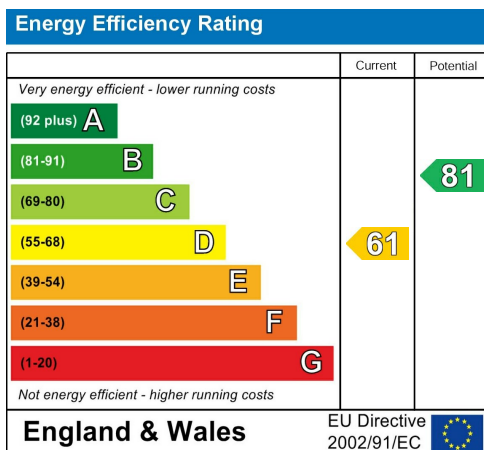
FIRST FLOOR

APPROX. GROSS INTERNAL FLOOR AREA 1646.87 SQ. FT / 153.00 SQ. M  
 APPROX. GROSS INTERNAL FLOOR AREA INCLUDING THE GARAGE 1969.79 SQ. FT / 183.00 SQ. M

WHILST EVERY ATTEMPT HAS BEEN MADE TO ENSURE THE ACCURACY OF THE FLOOR PLAN CONTAINED HERE, MEASUREMENTS OF DOORS, WINDOWS, ROOMS AND ANY OTHER ITEMS ARE APPROXIMATE AND NO RESPONSIBILITY IS TAKEN FOR ANY ERROR, OMISSION, OR MIS-STATEMENT. THIS PLAN IS FOR ILLUSTRATIVE PURPOSES ONLY AND SHOULD BE USED AS SUCH, BY ANY PROSPECTIVE PURCHASER.  
 FLOOR PLANS ARE NOT DONE TO "SCALE".

## Council Tax Band G

## Energy Performance Graph



Call us on

0208 904 8822

info@haymills.uk

Agents Note: Whilst every care has been taken to prepare these particulars, they are for guidance purposes only. All measurements are approximate and are for general guidance purposes only and whilst every care has been taken to ensure their accuracy, they should not be relied upon and potential buyers are advised to recheck the measurements.



**HAYMILLS**  
Expertise Experience Engagement