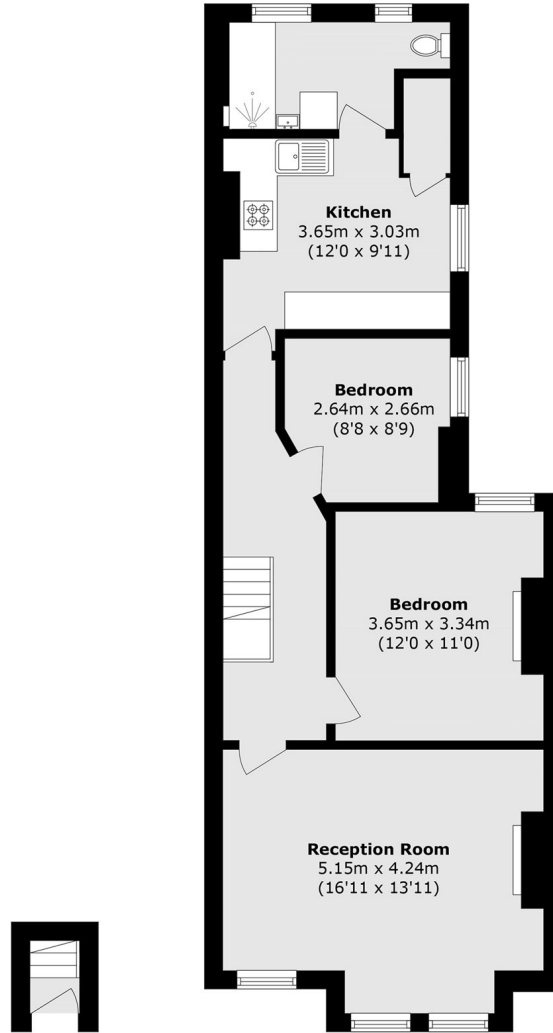




Seaford Road, W13

£425,000

A beautifully presented two double bedroom, move-in ready property that perfectly blends period charm with modern comfort, retaining a wealth of original Edwardian features throughout. Offered to the market with no onward chain and potential to extend further into the loft (STPP).



Ground Floor

First Floor

Total area (approx.): 69.3 sq. m (745.9 sq. ft)

Robertson Smith & Kempson Northfields Sales
116 Northfield Avenue,
London, W13 9RT
020 8566 2340
northfieldssales@robertsonsmithandkempson.co.uk

Energy Rating: D. We aim to make our particulars both accurate and reliable. However they are not guaranteed; nor do they form part of an offer or contract. If you require clarification on any points then please contact us, especially if you're traveling some distance to view. Please note that appliances and heating systems have not been tested and therefore no warranties can be given as to their good working order.