



10 Grayling Walk, Wolverhampton, WV10 0TW £775 Per Month



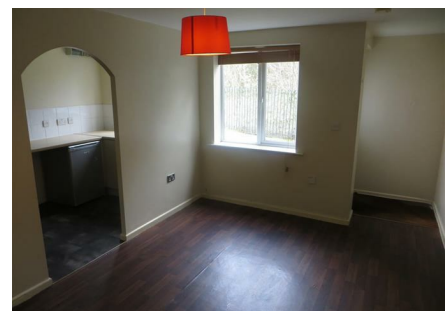
Nestled in the charming Grayling Walk of Wolverhampton, this delightful one-bedroom flat is a gem waiting to be discovered. Boasting a cosy reception room, a well-appointed bathroom, and a generous 538 sq ft of space, this property is perfect for those seeking a comfortable and convenient living space.

Built in the early 2000s, this ground floor apartment offers modern amenities while retaining a touch of classic elegance. The property's age and well-maintained condition make it a desirable choice for both first-time buyers and seasoned investors looking for a lucrative opportunity.

With parking space for one vehicle and residents' allocated parking, convenience is at the forefront of this property. The absence of an upward chain adds to the appeal, ensuring a smooth and hassle-free buying process for the lucky new owner.

Don't miss out on this fantastic opportunity to be a part of Wolverhampton's vibrant community at Grayling Walk.

- Ground Floor one bedroom apartment
- Residents allocated parking
- Good size lounge
- Fitted Kitchen



1668 Bristol Road South, Longbridge, Birmingham, West Midlands, B45 9TY

T. 0121 815 0197 | E. lettings@genie-homes.co.uk

www.genie-homes.co.uk