



📍 55B High Street, Burbage, Marlborough, Wiltshire, SN8 3AF

🏠 £1,200 PCM

Modern 2 double bedroom mid terrace home set in a convenient location seconds away from the High Street. This well proportioned home is finished to a high standard, including solar panels. Two allocated parking spaces. Available from Mid August. U/F. £1200pcm. Sorry No Pets

- Modern Mid Terrace House
- Two Double Bedrooms
- Modern Fitted Kitchen
- Integrated Appliances
- Living/Dining Room
- Downstairs Cloakroom
- Enclosed Rear Garden
- Two Allocated Parking Spaces
- Council Tax Band: D
- Sorry No Pets



🏠 EPC Rating C

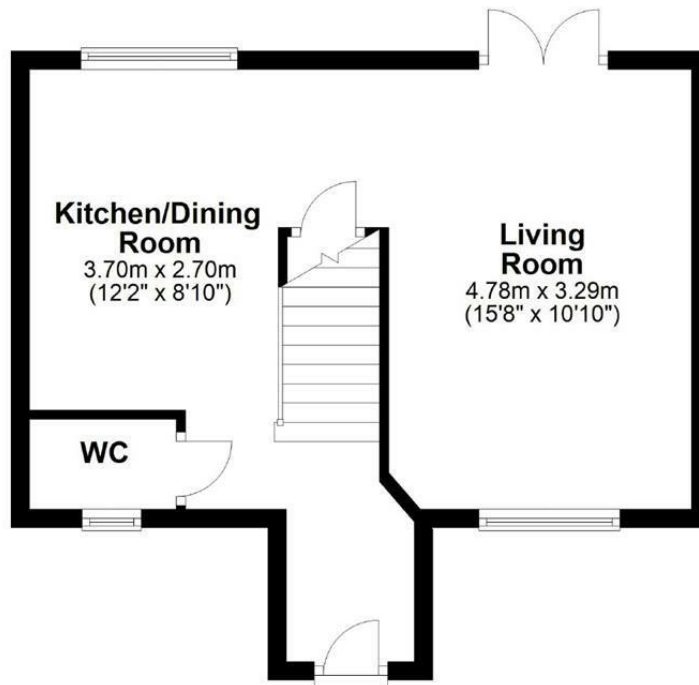


Modern 2 double bedroom mid terrace home set in a convenient location seconds away from the High Street of Burbage. This well proportioned home is finished to a high standard, including solar panel electric heating. On the ground floor the accommodation comprises an entrance hall, downstairs cloakroom, a good sized fitted kitchen/dining room, including integrated fridge/freezer, dishwasher and washing machine, the dual aspect living room has patio doors leading onto an enclosed rear garden. On the first floor there are 2 double bedrooms and a modern family bathroom. Outside there are two allocated parking spaces. Available from early July. U/F. £1200pcm.



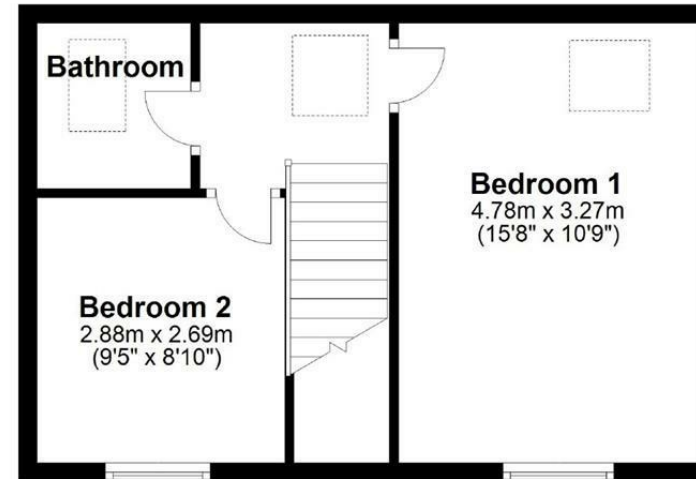
## Ground Floor

Approx. 36.6 sq. metres (393.7 sq. feet)



## First Floor

Approx. 34.4 sq. metres (370.2 sq. feet)



Total area: approx. 71.0 sq. metres (763.9 sq. feet)

Floorplan may not be exactly to scale but is for illustrative purposes only  
Plan produced using PlanUp.

Disclaimer These particulars, whilst believed to be accurate are set out as a general outline only for guidance and do not constitute any part of an offer or contract. Intending purchasers should not rely on them as statements of representation of fact, but must satisfy themselves by inspection or otherwise as to their accuracy. No person in this firm's employment has the authority to make or give any representation or warranty in respect of the property. All measurements and distances are approximate only. Your home is at risk if you do not keep up repayments on a mortgage or other loan secured on it.