



**WETHERELL**  
MAYFAIR'S FINEST PROPERTIES



## CHESTERFIELD STREET, W1J

**£10,250,000**

An immaculately presented Grade II listed Georgian townhouse in the heart of Mayfair, with lift, air conditioning and private roof terrace.

This elegant, freehold townhouse unfolds over 3,409 sq ft and is crowned by a private roof terrace. The home is the perfect blend of traditional grandeur, which includes high ceilings, intricate corning, hand-crafted fireplaces and large sash windows. These features are complimented by the modern comforts which include luxury spa-like bathrooms and sleek design. Every floor is accessible via lift.

The ground floor comprises an impressive entrance hall leading through to the elegant dining room with 3.3m ceiling heights and a feature fireplace, perfect for those who love to entertain. A fully restored Portland Stone staircase leads to the first floor onto the drawing room which is flooded with natural light, thanks to the French doors that open onto two Juliet balconies. Finely crafted corning with gold accents, wooden floors and a large fireplace add to the sense of grandeur felt throughout the home.

CHESTERFIELD STREET IS A VIRTUALLY, ENTIRELY INTACT GEORGIAN STREET IN MAYFAIR LOCATED MOMENTS FROM BOTH HYDE PARK AND GREEN PARK, AND IN EASY REACH OF SOME OF LONDON'S BEST-IN-CLASS HOTELS, RESTAURANTS AND AMENITIES.

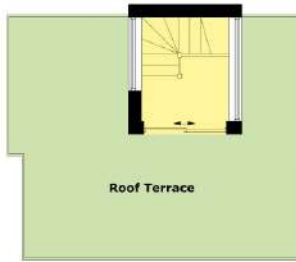


## FEATURES

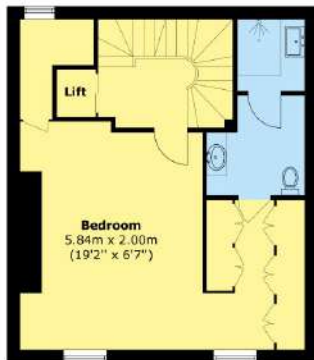
- Freehold • Grade II Listed • Georgian Townhouse • Four Bedrooms • Lift • Air Conditioning • Roof Terrace •



# CHESTERFIELD STREET, LONDON, W1J



**Fifth Floor**



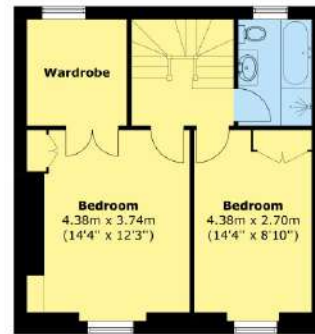
Ceiling Height - 2.90 m

**Second Floor**



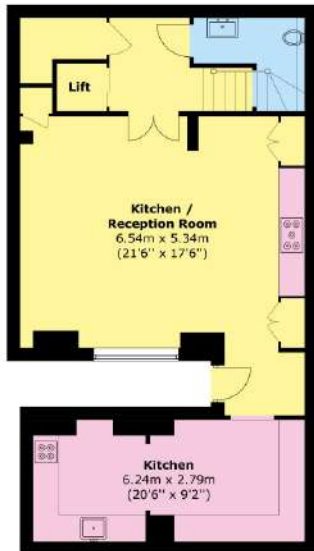
Ceiling Height - 3.13 m

**Third Floor**



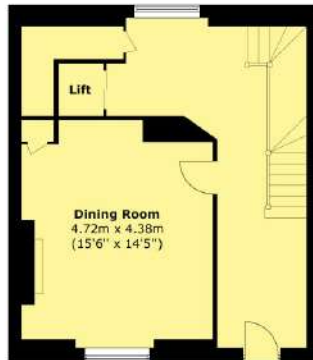
Ceiling Height - 2.93 m

**Fourth Floor**



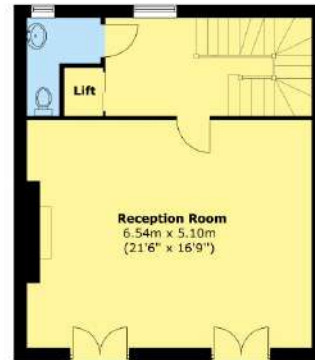
Ceiling Height - 3.12 m

**Basement**



Ceiling Height - 3.31 m

**Ground Floor**



Ceiling Height - 3.11 m

**First Floor**



Total area (approx.): 316.7 sq. m (3,409.9 sq. ft)  
Roof Terrace area (approx.): 29.0 sq. m (312.1 sq. ft)



**WETHERELL**  
MAYFAIR'S FINEST PROPERTIES

102 Mount Street,  
London, W1K 2TH  
T: 020 7529 5566  
E: sales@wetherell.co.uk

We aim to make our particulars both accurate and reliable. However they are not guaranteed; nor do they form part of an offer or contract. If you require clarification on any points then please contact us, especially if you're traveling some distance to view. Please note that appliances and heating systems have not been tested and therefore no warranties can be given as to their working order.

wetherell.co.uk