



Connells

Larks Barn Lichfield Road
Hamstall Ridware Rugeley



Property Description

Occupying an enviable position with stunning far-reaching countryside views, Larks Barn is a beautifully presented four-bedroom barn conversion offering a wonderful blend of character, space and modern family living.

This unique dormer bungalow-style home provides versatile accommodation arranged over two floors. The ground floor features an impressive and exceptionally spacious lounge, perfect for both relaxing and entertaining, together with a contemporary open-plan kitchen and dining/ family space, forms the heart of the home.

There are three well-proportioned bedrooms on the ground floor, including a guest bedroom benefiting from its own en-suite shower room, alongside a stylish family bathroom serving the remaining bedrooms.

A striking wrought iron spiral staircase leads to the first floor, where the superb principal bedroom suite enjoys a peaceful and private setting. This generous retreat is complemented by its own en-suite bathroom, creating an ideal sanctuary away from the main living accommodation.

Externally, Larks Barn is surrounded by delightful gardens offering numerous areas in which to relax, entertain and enjoy the spectacular rural outlook. The extensive outdoor space perfectly complements the property's countryside setting, while convenient off-road parking is located at the entrance to the garden area.

Combining the charm and character of a traditional barn conversion with modern comforts and breathtaking views

Entrance Hallway

Living Room

19' x 16' 1" (5.79m x 4.90m)

Kitchen Diner

22' 1" x 15' 10" (6.73m x 4.83m)

Bedroom Two with En-Suite

11' 9" x 10' 8" (3.58m x 3.25m)

Bedroom Three

11' 7" x 7' 10" (3.53m x 2.39m)

Bedroom Four

11' 8" x 7' 9" (3.56m x 2.36m)

First Floor Accommodation

Master Bedroom with En-Suite

16' 1" x 11' 8" (4.90m x 3.56m)

Gardens

Without doubt the highlight of the property are the superb attractive landscaped gardens with far reaching views with shaped lawns and well-established borders. The property is located in a fine rural location with a service road serving just a handful of properties leading to allocated parking spaces

Parking

Parking for Larks Barn is located at the bottom of the gated area at the entrance to the properties gardens.

Directions

Directions: Entering the village on Yoxall Road, pass the village pub (The Shoulder of Mutton) to your left, and take the next left onto Lichfield Road, carry on past the right-hand bend with Blythe House Farm, continue along Lichfield Road until you see the Connells For Sale board on the right hand side, indicating the driveway towards Larks Barn, follow the access road and turned left and round to the right where the barn can be found

Hamstall Ridware

Nestled in the picturesque Staffordshire countryside, Hamstall Ridware is a charming and sought-after rural village offering an idyllic lifestyle surrounded by open fields and rolling farmland. Rich in history and character, the village combines peaceful country living with a strong sense of community.

The village benefits from a well-regarded primary school, historic church, village hall and traditional public house, while everyday amenities can be found in nearby Rugeley, Lichfield and Burton upon Trent. Excellent road connections via the A515 and A38 provide convenient access to the wider Midlands, making Hamstall Ridware an attractive location for commuters seeking a tranquil setting without sacrificing connectivity.

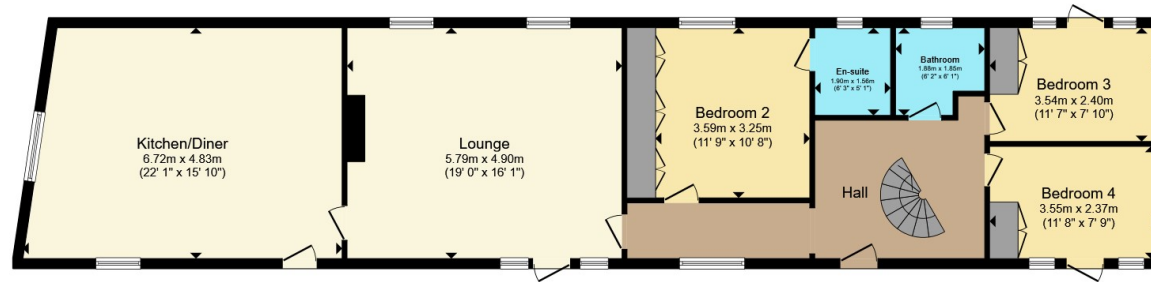
Surrounded by beautiful countryside, bridleways and walking routes, the area is ideal for those who enjoy outdoor pursuits, while nearby attractions such as the National Forest, Cannock Chase and Blithfield Reservoir offer further recreational opportunities.

Hamstall Ridware remains one of Staffordshire's hidden gems, appealing to families, professionals and retirees alike who are looking for a welcoming village environment, attractive rural surroundings and a high quality of life.

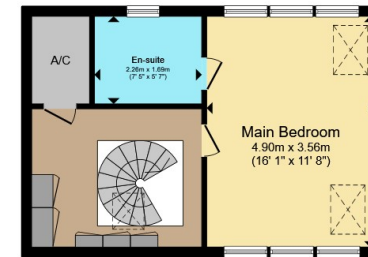








Ground Floor



First Floor

Total floor area 149.8 m² (1,612 sq.ft.) approx

This floor plan is for illustrative purposes only. It is not drawn to scale. Any measurements, floor areas (including any total floor area), openings and orientation are approximate. No details are guaranteed, they cannot be relied upon for any purpose and they do not form part of any agreement. No liability is taken for any error, omission or misstatement. A party must rely upon its own inspection(s). Powered by www.propertybox.io



To view this property please contact Connells on

T 01543 262 376
E lichfield@connells.co.uk

11-13 Bore Street
 LICHFIELD WS13 6LZ

EPC Rating: D Council Tax Band: G

Tenure: Freehold

view this property online connells.co.uk/Property/LFD312177



1. MONEY LAUNDERING REGULATIONS Intending purchasers will be asked to produce identification documentation at a later stage and we would ask for your co-operation in order that there will be no delay in agreeing the sale. 2. These particulars do not constitute part or all of an offer or contract. 3. The measurements indicated are supplied for guidance only and as such must be considered incorrect. Potential buyers are advised to recheck measurements before committing to any expense. 4. We have not tested any apparatus, equipment, fixtures, fittings or services and it is in the buyers interest to check the working condition of any appliances.

Connells Residential is registered in England and Wales under company number 1489613, Registered Office is Cumbria House, 16-20 Hockliffe Street, Leighton Buzzard, Bedfordshire, LU7 1GN. VAT Registration Number is 500 2481 05.

See all our properties at www.connells.co.uk | www.rightmove.co.uk | www.zoopla.co.uk

Property Ref: LFD312177 - 0005