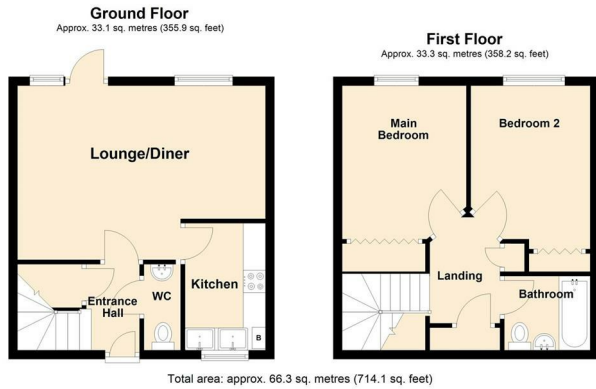




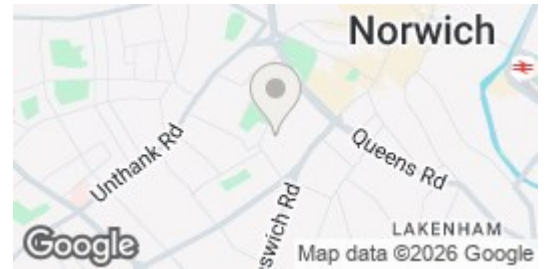
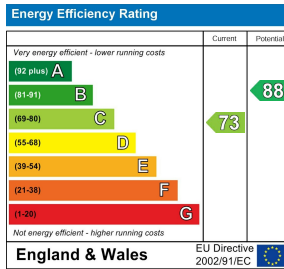
10 | Sarah West Close | Norwich | NR2 2TE

£1,100 PCM

 **BUTTERFLY** 
SALES, LETTINGS & PROPERTY MANAGEMENT



Every effort has been made to ensure the accuracy of the floorplan provided. However, measurements of doors, windows, rooms, and other items are approximate, and no responsibility is accepted for any errors, omissions, or inaccuracies. This floorplan is for illustrative purposes only and should be used as such by prospective tenants. The services, systems, and appliances depicted have not been tested, and no guarantee is made regarding their functionality or efficiency. Plan produced using PlanUp.



Description

This two bedroom end terraced home offers an entrance hall, WC, kitchen, and an 18'3 lounge/diner with access to the rear garden on the ground floor, with two bedrooms and a family bathroom with shower over the bath off the landing upstairs.

Outside, there is an allocated parking space to the front, with a path leading to the enclosed rear garden. The garden is low maintenance, with patio, shingled areas, and planted borders.

The property is well located for access to the city centre, main road links, and local amenities.

Key features

- Contemporary end terraced home in a highly sought after location
- 18'3 lounge/diner with twin windows and garden access
- Family bathroom with shower over the bath
- Allocated parking space at the front of the property
- Convenient access to the city centre, road links, and local amenities
- Two first floor double bedrooms, both with built-in storage
- Practical kitchen off the lounge
- Low maintenance rear garden
- Gas central heating and double glazing throughout
- Available from Mid June

Council Tax Band & Local Authority: B, Norwich
Deposit Required: £1,269

You can also scan the QR code to view the property online. This will take you directly to our website, where you'll find additional photos, detailed floorplan, and all the key information in line with Parts A, B, and C of the Material Information guidance for property listings. You'll also be able to browse our other available properties there.



Butterfly Lettings | 6 Church Lane | Eaton | NR4 6NZ
hello@butterflylettings.co.uk
www.butterflylettings.co.uk
01603 870870



Butterfly Lettings, trading as Butterfly Homes, and its representatives are not authorised to make statements or assurances about the property, whether on their own behalf or on behalf of the client. No responsibility is accepted for any statements contained in these particulars, which do not form part of any offer or contract. We have taken care to ensure that the details provided for each property are accurate at the time of listing. However, the information supplied is intended as a guide only, and we do not obtain confirmation from the seller's legal representative when preparing it. Buyers should verify any leasehold details, charges, or other matters through their own legal representatives. All measurements, areas, and distances are approximate. Fixtures, fittings, and appliances have not been tested, so we cannot guarantee that they are in working order. It should not be assumed that the property has all necessary planning permissions, building regulations, or other consents. We recommend checking the local council's website for information on conservation areas, flood risks, tree preservation orders, planning applications, and other relevant matters. We also advise reviewing the property and surrounding area using Google Maps or Street View before attending a viewing. Photographs are for illustration only and should not be taken as confirmation that any items shown are included in the sale. If any particular detail is important to you, please seek independent professional verification before proceeding. Referral Fees: Butterfly Homes may receive a referral fee from recommended solicitors, mortgage advisers, or other service providers. Any referral arrangement will not affect the cost or quality of the service provided.

We are Butterfly Lettings LTD trading as Butterfly Homes with registered number 15893663 and address C/O Shaw & Co 3 Colegate Norwich Norfolk NR3 1BN