



Lakeside Drive, NW10

£500,000

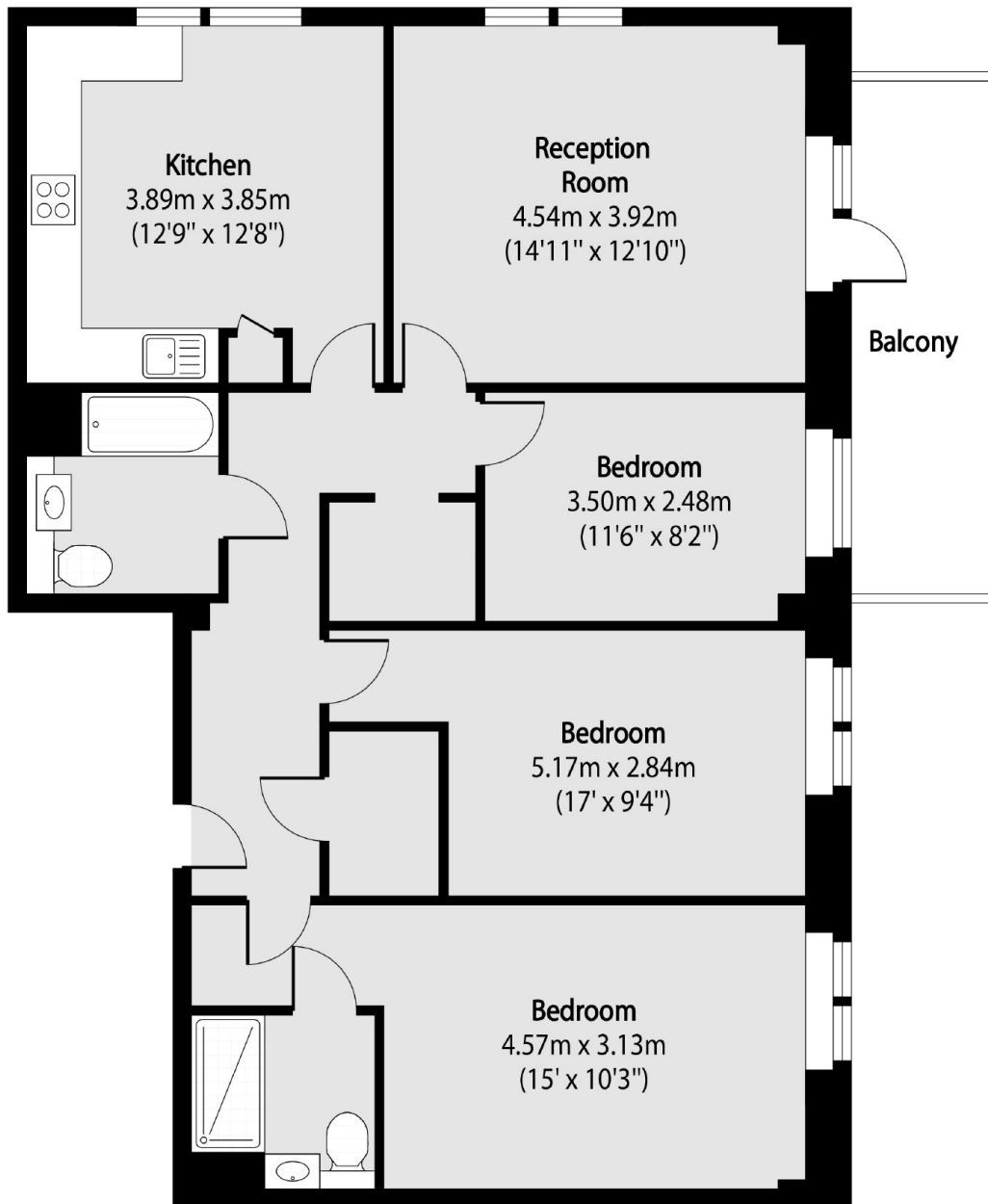
A three bedroom apartment with over 1,000 sq.ft of lateral living space and panoramic views overlooking the lake. The property has gated off-street parking, access to communal gardens and will be sold with no onward chain.

Under half a mile from Hanger Lane tube station (Central line) and Park Royal station (Piccadilly line). Lakeside Drive is served by the 226 bus route.

Features

- Three Bedrooms
- Two Bathrooms
- No Onward Chain
- Lakeside Views
- Private Balcony
- Gated Parking

Lakeside Drive,
London, NW10



Total area (approx): 95.84 sq m (1032 sq. ft)

Balcony total area (approx): 8.40 sq m (90 sq. ft)