

**ALLDAY
& MILLER**



Moorfield Road, Denham, UB9 5BY
£1,400 Per Month

 1  1  1  c



Moorfield Road, Denham, UB9 5BY

£1,400 Per Month

- Spacious One Bedroom Second Floor Apartment in an Exclusive Over 60's Development
- Beautifully Maintained Building With a Welcoming Atmosphere
- Vibrant Community Feel With Access to Shared Lounges and Social Space
- Walking Distance to Shops, Cafes, and Local Amenities
- Guest Accommodation Available For Visiting Friends and Family
- Private Balcony
- Secure Low Maintenance Living Ideal For Those Seeking Ease and Elegance
- Parking Available For An Additional Cost
- Excellent Transport Links Nearby, Ideal For Staying Connected
- On Site Management Providing Added Peace of Mind

Description

This delightful apartment offers a perfect blend of modern living and comfort. The property spans an impressive 635 square feet and is ideally suited for those seeking a peaceful retirement lifestyle.

Upon entering, you are welcomed by a spacious entrance hall that leads to a utility cupboard, providing practical storage solutions. The property comprises of a generously sized double bedroom with a spacious walk in wardrobe, a modern bathroom, the sleek fitted kitchen, which seamlessly flows into a bright and airy reception/dining room. The reception room is enhanced by French doors that open onto a charming balcony, allowing for an abundance of natural light and a lovely outdoor area.

Situation

Landmark Place situated on Moorfield Road in the popular Denham Green area which boasts a selection of good local amenities including Denham station that provides fast access into Marleybone. Surrounding towns close by such as Gerrards Cross, Beaconsfield, Uxbridge, and Rickmansworth enhance the area's appeal. Denham Green also has easy access to the A40, M40 and M25 motorways. The property boasts retirement living featuring a Home Owners Club lounge, a reading room, hobby room and sun lounge for you to enjoy the different activities Landmark Place has to offer.

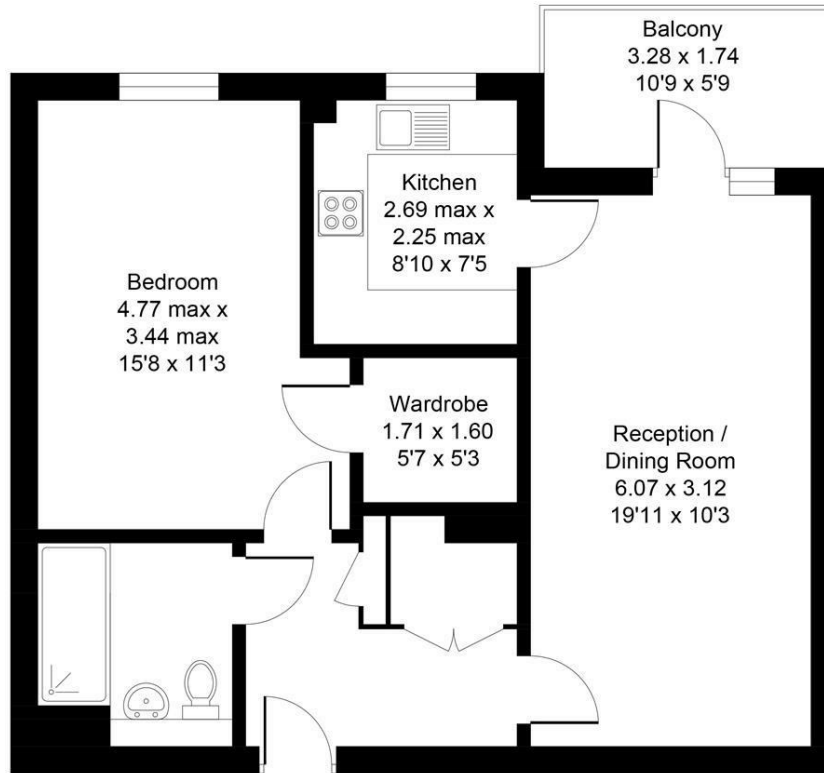


Floor Plans

Landmark Place, Moorfield Road, Denham, Uxbridge, UB9

Approximate Area = 625 sq ft / 58.1 sq m

For identification only - Not to scale

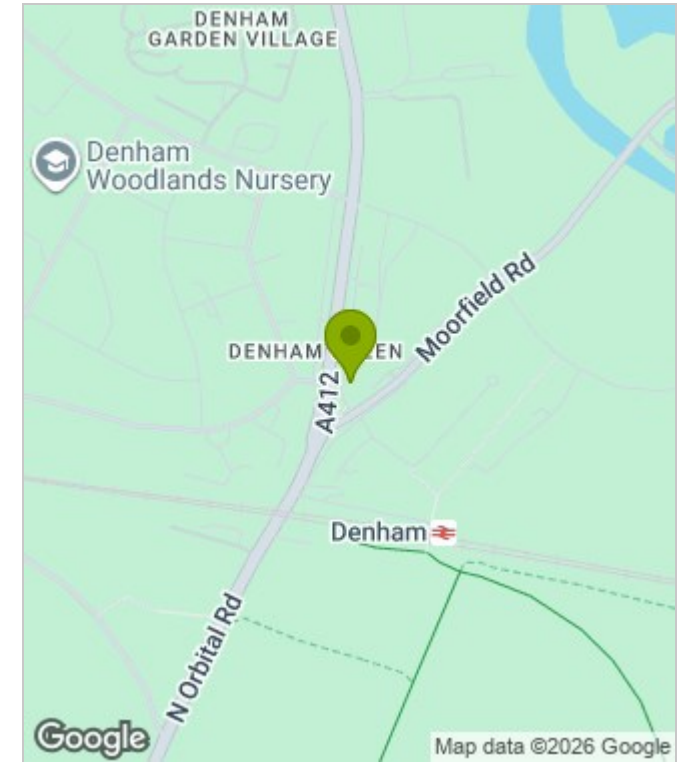


Second Floor

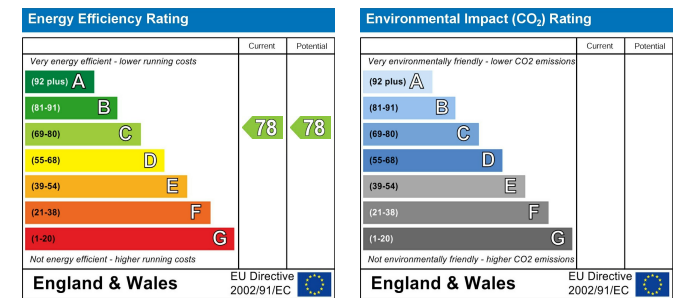
Floor plan produced in accordance with RICS Property Measurement Standards incorporating International Property Measurement Standards (IPMS2 Residential). ©Vizion Property Marketing 2025. Produced for Allday & Miller.

ALLDAY & MILLER
estate agents

Area Map



Energy Performance Graph



These particulars, whilst believed to be accurate are set out as a general outline only for guidance and do not constitute any part of an offer or contract. Intending purchasers should not rely on them as statements of representation of fact, but must satisfy themselves by inspection or otherwise as to their accuracy. No person in this firm's employment has the authority to make or give any representation or warranty in respect of the property.

www.alldayandmiller.co.uk

192 High Street, Uxbridge, Middlesex, UB8 1LB

T: 01895 641 000 | E: sales@alldayandmiller.co.uk
T: 01895 379 549 | E: lettings@alldayandmiller.co.uk