



83 Sherbourne Road, Witney



83 Sherbourne Road

SOLD OFF MARKET - SIMILAR PROPERTIES REQUIRED.

A well-presented three-bedroom detached home location on the popular Deer Park development.

Council Tax band: D

Tenure: Freehold

EPC Energy Efficiency Rating: D

EPC Environmental Impact Rating: D

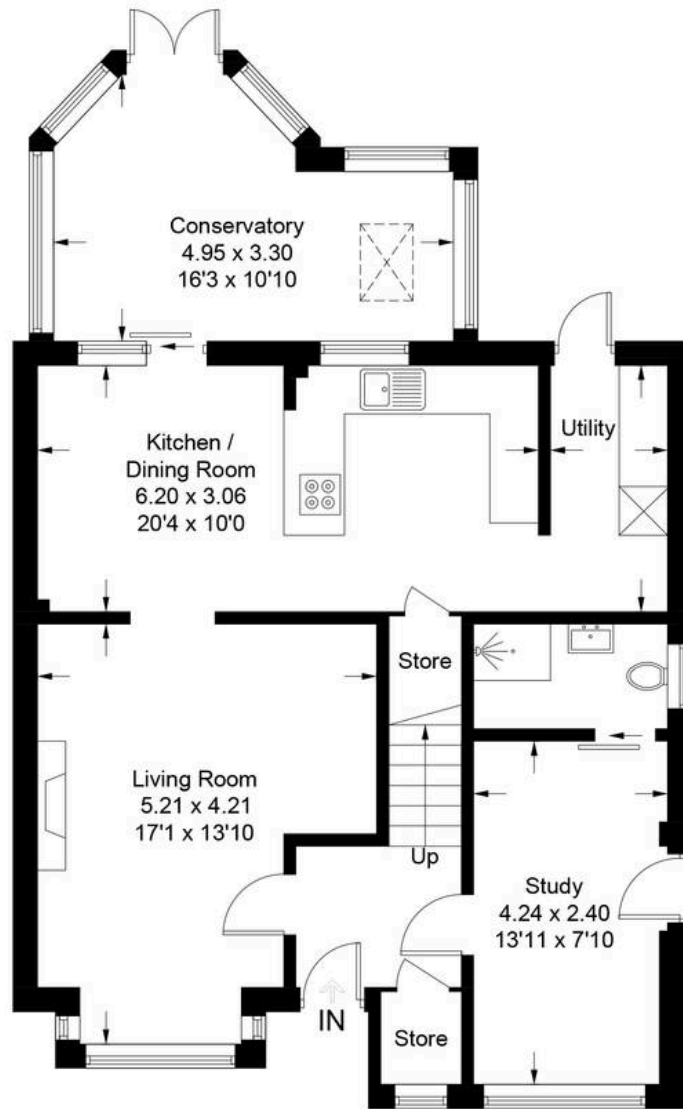
- A well-presented three-bedroom detached home situated on the popular Deer Park development.
- Open plan kitchen/dining room with integrated appliances and doors leading into the sun room.
- Sitting room with bay window and feature fireplace.
- Three well-proportioned bedrooms.
- Landscaped rear garden with extended patio area.
- Off-street parking.



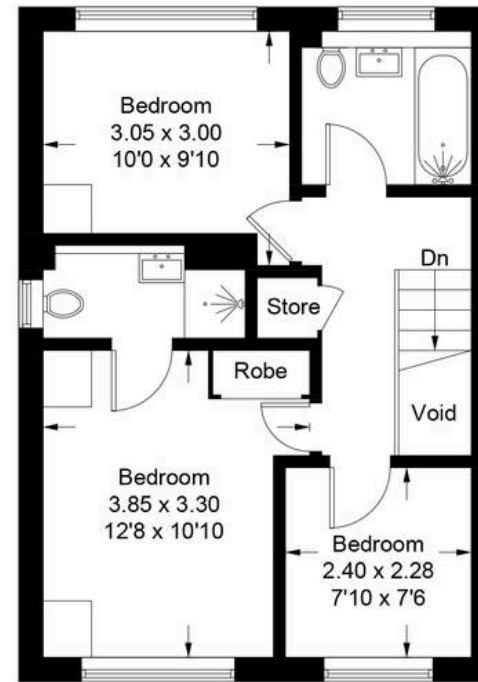


Sherbourne Road - Witney

Approximate Gross Internal Area = 122.0 sq m / 1313 sq ft



Ground Floor



First Floor

Illustration for identification purposes only, measurements are approximate, not to scale. Fourlabs.co © (ID1310308)



Simpsons Witney Branch

4 Langdale Court Witney, Oxfordshire - OX28 6AD

01993 835030 • witney@simpsonsproperty.com • www.simpsonsproperty.com/